

A large red barn with a gambrel roof. The letters 'D', 'S', and 'R' are painted in large white font on the side of the barn. Below the letters is a white rectangular frame. In the foreground, a group of seven cows of various colors (black, brown, and white) are standing on a green lawn. The barn has several windows and a large doorway.

D
S
R

DECKERT
Generations of Genetics
for your future

Dispersal Sale

Sept. 21, 2009

**At the Ranch • Arena, ND
Sale time: 12:00 p.m.**

Welcome from Sale Management



“Pioneers”..... per Webster dictionary is someone who is the first or among the earliest in any field of inquiry, enterprise or progress. If the Simmental breed created its own dictionary full of “cattle terms” surely Deckert Simmental would be pictured next to Pioneers.

In the early years, Orville and Marie Deckert believed in several things that will continue for generations and one of their beliefs was Simmental cattle. Their dedication to this breed on all levels from local to national set the ground work for the success for all of us. It was Orville that, after serving on the national board, believed there needed to be more unity in the breed and started with his own state. His vision of the Northern Black Classic and North Dakota Showcase was his way of bringing breeders across North America and Canada to ND and the vision of solid functional cattle appealing to the entire beef industry went hand’n hand. They have raised numerous show winners through the years like the first black female to win a major show at the American Royal in 1991 while staying focused on foundationally ideal females. The success of the Deckert program continued as Justin & Carrie took over the reins and continued to raise the right kind of cattle for the industry.

With that said, the only thing constant in life is change - with their love of this breed and the genetics assembled, the Deckerts have decided to host this dispersal so the beautiful set of females can continue to work in herds to produce outstanding Sim-genetics. The ranch gates are swung open and ready for your appraisal of this set of simply sensational females.

Join us on Sunday night to view the offering and great fellowship along with the Monday sale. If you have never been to the Peace Garden state of ND, this is the year to come. They have been blessed with ample rainfall and the country side is lush. It will be a gathering you will not want to miss!

We are here to assist you in any way possible and feel free to call us or visit with the Deckerts about the set of females that will be main stays in the future of the beef industry. We at Eberspacher Ent. Inc are thankful that our lives connected through this breed of cattle with the Deckert family and the journey of great Simmental genetics – thanks for the memories!

– Val & Lori Eberspacher
Eberspacher Ent Inc

DSR DECKERT

Simmental Ranch

Justin & Carrie Deckert

24952 392nd ST NE, Arena ND 58494
Home 701-943-2477 or Cell 701-425-6673
dsrcows@bektel.com

Sale Managers

Eberspacher ENTERPRISES INC.

Val & Lori Eberspacher

Office 507-532-6694

Cell 612-805-7405

Fax 507-532-9457

sales@ebersale.com

www.ebersale.com



Live Internet Bidding @ www.edjecast.com

Register to view or bid • No buyer's premium

Catalog and ad. design by
Strommen Livestock Services
Aaron & Sheyna Strommen
Fort Rice, ND • 701-445-2020

Video production by
Purple Haven Enterprises
Jeff Erhardt & Mark Fleck
New Salem, ND • 701-843-7845



Welcome

We would like to deliver a heartfelt Thank You to all our fellow friends and cattlemen who have been with us over the last 40 years.

Today, we are excited to share with you our most valued seed stock. Our goal has always been that "Our genetics, would make You a profit." We have been blessed to see that happen through years of experience and three generations.

Sit back and enjoy paging through the catalog and watching the DVD.

We hope you can appreciate the several decades of improving and promoting our herd, and the Simmental Breed.

We look forward to seeing you and sharing our Generations of Genetics!

- Justin and Carrie



Justin and Carrie Deckert



From left: Justin, Paige, Jaxon, Carrie and Jaden Deckert

Ranch History

In 1904, Grandpa William Deckert hopped on a bicycle and headed north from his home in South Dakota. He was searching for the perfect place to raise a family. When he arrived 15 miles north of Driscoll, N.D., he knew he had found the spot. Grandpa William carried out those dreams and set the foundation for what has become Deckert Simmental Ranch.

Orville started raising Simmental cattle in 1969, after experimenting with several new exotic breeds that were on the scene at the time. He could appreciate the disposition and the added pounds of calf at weaning time.

Deckert Simmental Ranch has been keeping production records since 1964, and we have incorporated this data, along with fertility records, to strictly cull our cow herd. Through our A.I. program, we have had access to world class genetics since 1967. Those 42 years of herd improvements have allowed us to be very competitive at state fairs, the American Royal Stock Show in Kansas City, MO., and the National Western Stock Show in Denver, CO.

It was always fun to have a good day and win, but accomplishing a solid herd of great genetics through generations of careful selection and management, is the true "win" in our book.

It has been a blessing to make our living and build our lives on Grandpa William's original homestead. Thank you, Grandpa.

With that, we welcome you to the Generations of Genetics sale.



Right: Orville received the North Dakota Simmental Association's Pioneer Breeder Award in 1995. Both Orville and Justin have served on the NDSA board. Orville also served as an American Simmental Association trustee from 1987 to 1992.





DECKERT Generations of Genetics for your future

Dispersal Sale

Sept. 21, 2009

**At the Ranch • Arena, ND
Sale time: 12:00 p.m.**

Offering
OVER 250 HEAD!

Sale Day Phones

(701) 943-2438 • (701) 943-2467 • (701) 943-2470 • (612) 805-7405

Sale Preview

Sunday, Sept. 20, 2009

Cattle viewing all day & social from 4 - 7:00 p.m.

Monday, Sept 21

8:00 a.m. Viewing of Deckert Sale Cattle
12:00 p.m. Deckert Simmental dispersal

Sale Headquarters

Hampton Inn, Bismarck, N.D., (701) 751-3100. A block of rooms is reserved until Sept. 14.

Air Transportation

Bismarck Airport, Bismarck, N.D., is served by Northwest, United Express and Allegiant Airlines and has excellent facilities for light aircrafts.

EPDs

EPDs listed are the Fall 2009 numbers. Please note the EPDs may change from the time the sale catalog is printed until registration papers are transferred.

Announcements

Announcements made sale day and from the auction block during the sale take precedence over printed material in the catalog or other printed material associated with this sale. Anyone attending this sale attends at their own risk. Deckert Simmental Ranch and sale force will not be held responsible for any personal injury for attending this sale.

Trucking

Deckert Ranch and Eberspacher Enterprises will assist buyers in coordinating and making the most economical trucking possible.

Insurance

Insurance will be available sale day through sale management and Jame Secondino, American Livestock Insurance, (765) 832-2697

Terms

All sales are final.

Sale Consultants

Bouchard Livestock International

Brian Bouchard..... (403) 813-7999
Scott Bohrsen..... (403) 370-3010

Publication Representatives

Jeff Thomas, Lee AgriMedia (406) 581-8859
Terry Robinson, Lee AgriMedia (701) 255-3037
Kelly Schmidt, ASA Field Representative (406) 599-2395
Ross Glass, Special Assignment..... (701) 290-4001

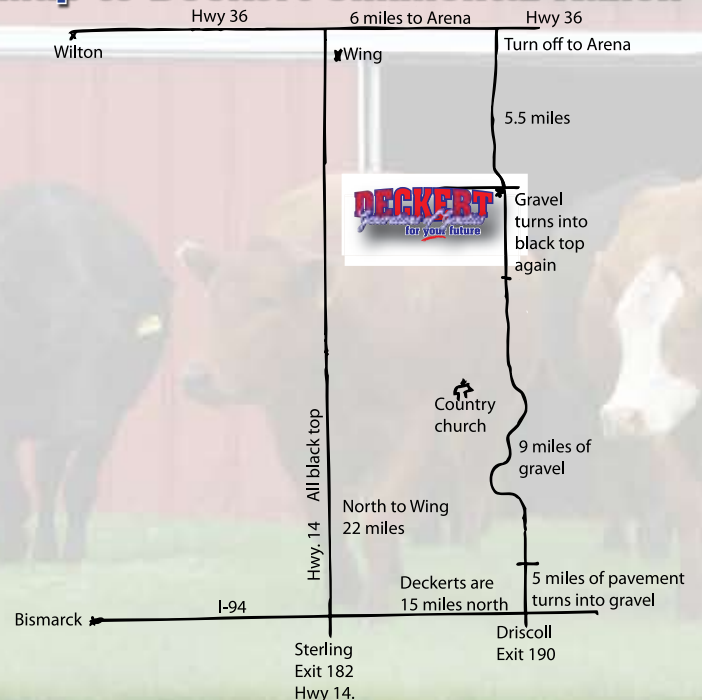
Auctioneer

Col. Jim Birdwell..... (580) 695-2352

Herd Health

The cows get an annual shot of Bovi-Shield Gold 4VL5. They also receive Scour Guard 3KC. The calves received Bovi-Shield Gold and 7-Way at branding; and Bovi-Shield Gold twice at pre-weaning, as well as One Shot and 7-Way

Map to Deckert Simmental Ranch



DSR Third Time Charm



Reg. # Tattoo BD % Simm Color BW WW H/P/S
2430936 T333 3/4/07 PB RED 91 685 P

Hooks Shear Force 38K
WS Beef Maker R13
DCR Ms Ribeye N72
LRS Red Reality 33J
DSR Emerald R796
DSR Emmie N104

Here's a cow that stacks a great set of numbers. Her CE EPD is in the top 15%, then her WW, YW, REA, and TI numbers are in the top 1%. She also posts an IMF and API numbers in the top 3%. AI'd on 6/2/09 to GCF Mr Amigo. Exposed to DSR Signature T458 from 6/10/09 to 8/6/09. Ultrasound safe to AI with a bull calf.

CE	BW	WW	YW	MCE	Milk	MWW	CW	YG	Marb	REA	API	TI
10	2	54	88	-3	-3	24	17.6	-0.06	0.38	0.64	130	79



DSR Sweet Signature W345

This is a DSR Signature T458 daughter out of Lot 1.

Reg. # Tattoo BD % Simm Color BW WW H/P/S
2489024 W345 3/31/09 PB RED 77 P

CE	BW	WW	YW	MCE	Milk	MWW	CW	YG	Marb	REA	API	TI
8	2	46	80	1	1	24	13	-0.05	0.23	0.44	114	70



DSR Miss Networkh T336

Reg. # Tattoo BD % Simm Color BW WW H/P/S
2430939 T336 3/5/07 1/2 SIM 1/2 ANGUS BLK 86 664 P

S A V 8180 Traveler 004
S A V Net Worth 4200
S A V May 2410
ER Black Cisco 532C
DSR Belara J107
DSR Super Powder G57

Here's a Sim-Angus cow that has an API and TI no. in the top 20%. AI'd on 6/5/09 to PVF 6S17 HY Touchdown. Exposed to HSR Dakota Kid T804 from 6/11/09 to 7/17/09 and DSR Real Stone U248 from 7/1/09 to 8/8/09.

CE	BW	WW	YW	MCE	Milk	MWW	CW	YG	Marb	REA	API	TI
*	-1	35	74	*	12	29	4.9	0.23	0.44	0.13	117	71



DSR Glitz T304

Reg. # Tattoo BD % Simm Color BW WW H/P/S
2430923 T304 2/26/07 1/2 SIM 1/2 ANGUS BLK 86 650 P

B/R New Design 036
Bon View New Design 878
Bon View Gammer 85
GFI Magnum K52
DSR Pizzazz R753
DSR Lucky Vib L63

This Sim-Angus cow has a growth pedigree. AI'd on 6/6/09 to PVF 6S17 HY Touchdown. Exposed to HSR Dakota Kid T804 from 6/11/09 to 7/17/09 and DSR Real Stone U248 from 7/1/09 to 8/8/09.

CE	BW	WW	YW	MCE	Milk	MWW	CW	YG	Marb	REA	API	TI
*	0	35	69	*	7	24	3.9	0.17	0.26	-0.18	102	64



DSR Unlimited T307

Reg. # Tattoo BD % Simm Color BW WW H/P/S
2430925 T307 2/26/07 3/4 SIM 1/4 ANGUS BLK 80 606 P

SRS J914 Preferred Beef
ES Dakota Nk68
ESK68
B C C Bushwacker 41-93
DSR No Limit P410
DSR Black Limit H147

This is a 3/4 blood Dakota cow. AI'd on 6/5/09 to SVF/NJC Mo Better M217. Exposed to HSR Dakota Kid T804 from 6/11/09 to 7/17/09 and DSR Real Stone U248 from 7/1/09 to 8/8/09. Ultrasound due date is is 3/31/2010 with a heifer calf.

CE	BW	WW	YW	MCE	Milk	MWW	CW	YG	Marb	REA	API	TI
*	1	37	71	*	5	24	5.9	-0.02	0.28	0.46	109	68





Lot 5 -
DSR Grand
Design T317



DSR Grand Design T317

Reg. # Tattoo BD % Simm Color BW WW H/P/S
2430930 T317 2/28/07 1/2 SIM 1/2 ANGUS BLK 80 669 P

- B/R New Design 036
- Bon View New Design 878
- Bon View Gammer 85
- SRS J914 Preferred Beef
- DSR Black Flare R820
- DSR Black Country L109

This Sin-angus cow had a ratio of 104 for birth and weaning ratio, then has an IMF ratio of 105 and REA of 114. AI'd on 6/6/09 to PVF 6S17 HY Touchdown. Exposed to HSR Dakota Kid T804 from 6/11/09 to 7/17/09 and DSR Real Stone U248 from 7/1/09 to 8/8/09. Ultrasound safe to AI with a bull calf.

CE	BW	WW	YW	MCE	Milk	MWW	CW	YG	Marb	REA	API	TI
*	86	36	75	*	10	28	6.9	0.18	0.38	0.14	109	68



Lot 6 -
DSR Red
Hideaway
T423



DSR Red Hideaway T423

Reg. # Tattoo BD % Simm Color BW WW H/P/S
2430964 T423 3/19/07 PB RED 93 612 P

- CNS Dream On L186
- Remington Red Label Hr
- HS Reflections J34
- WHF Red Ransom 840E
- DSR Hideaway K228
- DSR Elissia D103

Here's a chance to get in on the progeny of the K228 cow. AI'd on 6/1/09 to GCF Mr Amigo. Exposed to WS Beef Maker from 6/10/09 to 8/8/09. Ultrasound due date is 3/28/2010 with a bull calf.

CE	BW	WW	YW	MCE	Milk	MWW	CW	YG	Marb	REA	API	TI
3	4	32	54	5	9	25	0.3	0	0.14	0.05	91	57



Lot 7 -
DSR Dakota
Luck T330



DSR Dakota Luck T330

Reg. # Tattoo BD % Simm Color BW WW H/P/S
2489025 T330 3/4/07 PB BLK 88 663 P

- SRS J914 Preferred Beef
- ES Dakota Nk68
- ESK 68
- GW Lucky Break 047G
- DSR Perfect Luck L6
- DSR Perfect Powder J84

The L6 cow weaned 6 calves for a 106 weaning ratio and had 4 have an average 103 IMF. AI'd on 6/6/09 to RC Club King 040R. Exposed to HSR Dakota Kid T804 from 6/11/09 to 7/17/09 and DSR Real Stone U248 from 7/1/09 to 8/8/09.

CE	BW	WW	YW	MCE	Milk	MWW	CW	YG	Marb	REA	API	TI
4	2	37	74	-1	5	24	9.6	-0.05	0.11	0.25	107	63



This is a Bon View New Design 878 daughter out of Lot 7.

7a

DSR Dakota Design W227

Reg. # Tattoo BD % Simm Color BW WW H/P/S
2389025 W227 3/3/09 1/2 SIM 1/2 ANGUS BLK 67 * P

CE	BW	WW	YW	MCE	Milk	MWW	CW	YG	Marb	REA	API	TI
0	-2	29	64	0	10	25	-2.1	0.16	0.44	-0.09	118	69



Lot 8 -
DSR Cool
Beef T334



DSR Cool Beef T334

Reg. # Tattoo BD % Simm Color BW WW H/P/S
2430937 T334 3/5/07 PB RED 78 577 P

- Hooks Shear Force 38K
- WS Beef Maker R13
- DCR Ms Ribeye N72
- DSR Super Bear D21
- DSR Super Cool K56
- DSR Tracy F113

Here's a heifer out of the K56 cow. I thought she would have a lot of potential. It looks like she will. AI'd on 6/25/09 to WS Beef Maker R13. Exposed to DSR Signature T458 from 7/3/09 to 8/6/09. Ultrasound safe to AI.

CE	BW	WW	YW	MCE	Milk	MWW	CW	YG	Marb	REA	API	TI
8	-2	24	41	0	8	20	-15.6	0.05	0.19	0.06	114	61



This is a TNT Gunner N208 daughter out of Lot 8.

8a

DSR Miss Cool W240

Reg. # Tattoo BD % Simm Color BW WW H/P/S
2489026 W240 3/9/09 PB RED 77 P

CE	BW	WW	YW	MCE	Milk	MWW	CW	YG	Marb	REA	API	TI
8	0	30	49	3	7	22	-9.1	0.05	0.09	0.09	104	60

DSR Sweet Command T345



Reg. # Tattoo BD % Simm Color BW WW H/P/S
2430942 T345 3/7/07 PB BLK 106 638 P

BH BS GW 600U 1744G
DWSR Commander

Opps Cactus Amber
LRS Red Reality 33J

DSR Sweet On You M196

DSR American Success G21

This is a double black and polled cow. AI'd on 6/6/09 to Sinclair Extra 4x13. Exposed to HSR Dakota Kid T804 from 6/11/09 to 7/17/09 and DSR Real Stone U248 from 7/1/09 to 8/8/09. Ultrasound due date is is 4/16/2010.

CE	BW	WW	YW	MCE	Milk	MWW	CW	YG	Marb	REA	API	TI
10	6	46	84	3	-3	20	20.9	0.06	0.03	-0.07	97	61



DSR Dakota Fortune T347



Reg. # Tattoo BD % Simm Color BW WW H/P/S
2430943 T347 3/8/07 PB RED 79 583 P

Branded Beef Lcc L397L

MLC Dakota Sunrise P32

MLC Red Light M33

SRS Fortune 500

DSR Lady Fortune L133

DSR Disa F10

Here's a non-diluted cow out of the easy keeping L133 cow. AI'd on 6/1/09 to WS Beef Maker R13. Exposed to WS Beef Maker from 6/10/09 to 8/8/09. Ultrasound due date is 3/31/2010 with a heifer calf.

CE	BW	WW	YW	MCE	Milk	MWW	CW	YG	Marb	REA	API	TI
6	3	37	69	7	7	26	8.5	0.04	0.18	-0.01	103	63



DSR Black Spice T348



Reg. # Tattoo BD % Simm Color BW WW H/P/S
2430944 T348 3/8/07 PB BLK 83 630 P

SRS J914 Preferred Beef

ES Dakota Nk68

ESK68

SRS Fortune 500

DSR Fortune Spice K8

DSR Black Essence H17

We added some growth to the K8 cow and some IMF to Dakota. She had a ratio of 106 for IMF and 103 for REA. AI'd on 6/27/09 to Sinclair Extra 4x13. Exposed to HSR Dakota Kid T804 from 7/3/09 to 7/17/09 and DSR Real Stone U248 from 7/1/09 to 8/8/09.

CE	BW	WW	YW	MCE	Milk	MWW	CW	YG	Marb	REA	API	TI
4	0	33	65	-2	6	23	1.2	-0.05	0.23	0.17	114	66



DSR Passion Berry T358



Reg. # Tattoo BD % Simm Color BW WW H/P/S
2430948 T358 3/10/07 PB RED 83 693 P

CNS Dream On L186

Remington Red Label Hr

HS Reflctions J34

Branded Beef Lcc L397L

DSR Sweet Passion P18

DSR Chanel K94

She's got some strong cows in her background. AI'd on 6/2/09 to GCF Mr Amigo. Exposed to DSR Signature T458 from 6/10/09 to 8/6/09. Ultrasound due date 3/31/2010 with a bull calf.

CE	BW	WW	YW	MCE	Milk	MWW	CW	YG	Marb	REA	API	TI
3	1	42	65	8	8	29	2	-0.05	0	0.26	101	63





Lot 13 -
DSR Bottom
Line T362

DSR Star Brite T367

Reg. #	Tattoo	BD	% Simm	Color	BW	WW	H/P/S
14	2430950	T367 3/12/07	1/2 SIM 1/2 ANGUS	BLK	95	747	P

S A V 8180 Traveler 004 This is a high growth Sim-Angus cow. She really scanned well, with a 104 ratio for IMF and a 131 REA ratio. AI'd on 6/6/09 to PVF 6S17 HY Touchdown. Exposed to HSR Dakota Kid T804 from 6/11/09 to 7/17/09 and DSR Real Stone U248 from 7/1/09 to 8/8/09. Ultrasound due date is 4/4/2010.

S A V Net Worth 4200
S A V May 2410
ER Black Cisco 532C
DSR Shooting Star J33
DSR Four-Star G67

CE	BW	WW	YW	MCE	Milk	MWW	CW	YG	Marb	REA	API	TI
*	0	48	97	*	7	31	21.3	0.28	0.35	0.46	111	75

DSR Starlite W399

Reg. #	Tattoo	BD	% Simm	Color	BW	WW	H/P/S
14a	2489028	W399 4/7/09	3/4 SIM 1/4 ANGUS	RED	77		P

This is a DSR Signature T458 daughter out of Lot 14. She's a red non-diluted, 3/4 blood that is really thick.

CE	BW	WW	YW	MCE	Milk	MWW	CW	YG	Marb	REA	API	TI
*	0	40	80	*	6	26	11.2	0.11	0.22	0.34	109	70



Lot 16 -
DSR Over
The Top T374



Lot 17 -
DSR Country
Girl T376

DSR Country Charm W244

Reg. #	Tattoo	BD	% Simm	Color	BW	WW	H/P/S
17a	2489030	W244 3/10/09	3/4 SIM 1/4 ANGUS	BLK	76		P

This is a Triple C Invasion R47K daughter out of Lot 17.

CE	BW	WW	YW	MCE	Milk	MWW	CW	YG	Marb	REA	API	TI
*	0	30	61	*	9	24	-1.6	0.07	0.28	0.27	110	66

DSR Bottom Line T362

Reg. #	Tattoo	BD	% Simm	Color	BW	WW	H/P/S
13	2430949	T362 3/10/07	1/2 SIM 1/2 ANGUS	BLK	99	596	P

S A V 8180 Traveler 004 I'm really happy with our Network females, they are deep sided and appears to milk well.
S A V Net Worth 4200 AI'd on 6/6/09 to PVF 6S17 HY Touchdown.
S A V May 2410 Exposed to HSR Dakota Kid T804 from 6/11/09 to 7/17/09 and DSR Real Stone U248 from 7/1/09 to 8/8/09. Ultrasound due date is 4/4/2010.
PTL Jack Pot C588
DSR Miss Once Over G113
Miss Striegel X328

CE	BW	WW	YW	MCE	Milk	MWW	CW	YG	Marb	REA	API	TI
*	5	39	75	*	7	27	14.3	0.2	0.37	-0.21	82	58

DSR Right Choice W241

Reg. #	Tattoo	BD	% Simm	Color	BW	WW	H/P/S
13a	2489027	W241 3/9/09	3/4 SIM 1/4 ANGUS	BLK	72		P

This is an ESMJ Conservative MJ9365 daughter out of Lot 13.

CE	BW	WW	YW	MCE	Milk	MWW	CW	YG	Marb	REA	API	TI
0	0	37	68	0	5	23	2.6	0	0.17	0.18	109	68

DSR Red Jingle T373

Reg. #	Tattoo	BD	% Simm	Color	BW	WW	H/P/S	
15	2430951	T373 3/13/07		PB	RED	89	630	P

KENCO/MF Powerline 204L It looks like these Crockett daughters are going to make good cows. AI'd on 6/2/09 to WS Beef Maker R13. Exposed to WS Beef Maker from 6/10/09 to 8/8/09. Ultrasound safe to AI.
LBR Crockett R81
LBR Night Dream M22
LRS Red Reality 33J

DSR Red Dazzel M19
DSR Red Dish K51

CE	BW	WW	YW	MCE	Milk	MWW	CW	YG	Marb	REA	API	TI
4	2	39	72	-4	0	19	7.5	0.01	0.18	0.29	108	65

DSR Over The Top T374

Reg. #	Tattoo	BD	% Simm	Color	BW	WW	H/P/S
16	2430952	T374 3/13/07	3/4 SIM 1/4 ANGUS	BLK	97	645	P

Ellingson Blackperfector Here's a smaller framed cow with a ton of guts. She scanned a 123 ratio for IMF and a 121 for REA. AI'd on 6/6/09 to SVF/NJC Mo Better
Brooks Above Par
STF Rebeca
B C C Bushwacker 41-93 M217. Exposed to HSR Dakota Kid T804 from 6/11/09 to 7/17/09 and DSR Real Stone U248 from 7/1/09 to 8/8/09. Ultrasound safe to AI.
DSR Jaci N303
DSR Jaci L153

CE	BW	WW	YW	MCE	Milk	MWW	CW	YG	Marb	REA	API	TI
*	4	42	77	*	-5	17	14.3	0.13	0.42	0.45	99	68

DSR Topaz W235

Reg. #	Tattoo	BD	% Simm	Color	BW	WW	H/P/S
16a	2489029	W235 3/7/09		PB	BLK	78	P

This is a Triple C Invasion R47K daughter out of Lot 16.

CE	BW	WW	YW	MCE	Milk	MWW	CW	YG	Marb	REA	API	TI
7	2	32	58	0	2	18	-0.4	0.01	0.32	0.44	102	63

DSR Country Girl T376

Reg. #	Tattoo	BD	% Simm	Color	BW	WW	H/P/S
17	2430953	T376 3/13/07	1/2 SIM 1/2 ANGUS	BLK	71	618	P

S A V 8180 Traveler 004 This Sim-Angus cow had a 104 IMF ratio and a 107 REA ratio. AI'd on 6/6/09 to PVF 6S17 HY Touchdown. Exposed to HSR Dakota Kid T804 from 6/11/09 to 7/17/09 and DSR Real Stone U248 from 7/1/09 to 8/8/09.
S A V Net Worth 4200
S A V May 2410
LRS Big Country 37E
DSR Big Maxine L166
DSR Maxine B-66

CE	BW	WW	YW	MCE	Milk	MWW	CW	YG	Marb	REA	API	TI
*	-1	37	81	*	9	27	10	0.26	0.34	0.12	110	69

DSR Holley T389



Reg. # Tattoo BD % Simm Color BW WW H/P/S
2430957 T389 3/15/07 PB RED 89 628 P

KENCO/MF Powerline 204L She's double polled and red. Her dam has done a good job for us. Al'd on 6/2/09 to WS Beef Maker R13. Exposed to WS Beef Maker 6/10/09 to 8/8/09. Ultrasound due date 3/29/2010 with a heifer calf.
LBR Crockett R81
LBR Night Dream M22
LRS Red Reality 33J
DSR Real Starlet M92
DSR Starlet J16

CE	BW	WW	YW	MCE	Milk	MWW	CW	YG	Marb	REA	API	TI
4	2	36	66	-4	-2	17	5.1	0.09	0.37	-0.02	113	67



DSR Annie W229

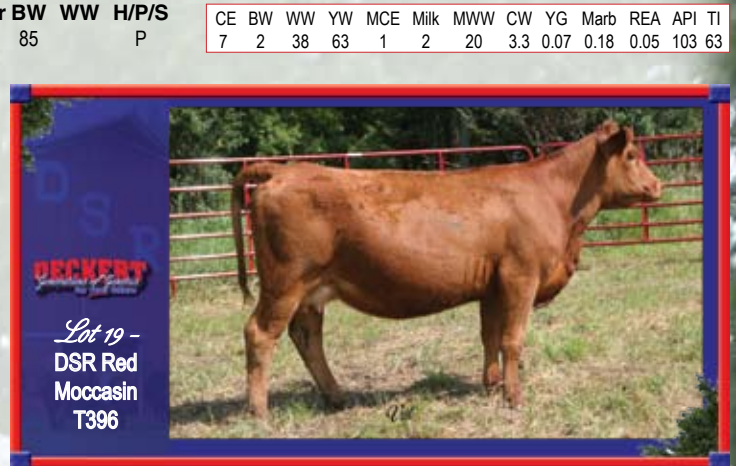


This is a TNT Gunner N208 daughter out of Lot 18.

Reg. # Tattoo BD % Simm Color BW WW H/P/S
2489031 W229 3/4/09 PB RED 85 P

KENCO/MF Powerline 204L We've had maternal brothers go out to Forster Farms NE and Krecklau Simmentals ND. I expect big things from this homozygous polled female. Al'd on 6/1/09 to WS Beef Maker R13. Exposed to DSR Signature T458 from 6/10/09 to 8/6/09. Ultrasound due date 3/31/2010 with a bull calf.
LBR Crockett R81
LBR Night Dream M22
DSR Evolution J78
DSR Red Fox L7
DSR Foxy Roxy J59

CE	BW	WW	YW	MCE	Milk	MWW	CW	YG	Marb	REA	API	TI
5	1	35	56	-3	6	23	-2.7	0	0.24	0.17	114	65



DSR Priceless T412



Reg. # Tattoo BD % Simm Color BW WW H/P/S
2430961 T412 3/18/07 1/2 SIM 1/2 ANGUS BLK 72 599 P

S A V 8180 Traveler 004 Priceless is a double black and polled Sim-Angus cow. Al'd on 6/6/09 to PVF 6S17 HY Touchdown. Exposed to HSR Dakota Kid T804 from 6/11/09 to 7/17/09 and DSR Real Stone U248 from 7/1/09 to 8/8/09.
S A V Net Worth 4200
S A V May 2410
PPSR Nophalt 20H
DSR Timeless N23
DSR Selene F14

CE	BW	WW	YW	MCE	Milk	MWW	CW	YG	Marb	REA	API	TI
*	-2	34	79	*	12	29	7.1	0.16	0.25	0.14	114	69



DSR Dakota Moves T405



Reg. # Tattoo BD % Simm Color BW WW H/P/S
2430960 T405 3/17/07 PB BLK 95 635 P

SRS J914 Preferred Beef Here's a double black and polled cow. Al'd on 6/5/09 to Mr NLC Superior S6018. Exposed to HSR Dakota Kid T804 from 6/11/09 to 7/17/09 and DSR Real Stone U248 from 7/1/09 to 8/8/09. Ultrasound due date 4/2/2010 with a heifer calf.
ES Dakota Nk68
ESK68
WLE Overload
DSR Move Over P109
DSR Moon Kissed H27

CE	BW	WW	YW	MCE	Milk	MWW	CW	YG	Marb	REA	API	TI
3	4	42	78	-2	1	22	15.3	0	-0.06	0.05	93	58

DSR Dakota Polly T446



Reg. # Tattoo BD % Simm Color BW WW H/P/S
2430971 T446 3/23/07 PB BLK 83 608 P

SRS J914 Preferred Beef Here's a cow that goes back to the L212 cow. Al'd on 6/6/09 to Sinclair Extra 4x13. Exposed to HSR Dakota Kid T804 from 6/11/09 to 7/17/09 and DSR Real Stone U248 from 7/1/09 to 8/8/09. Ultrasound due date 4/18/2010.
ES Dakota Nk68
ESK68
DSR Stone Edge G14
DSR Polly Ann L212
DSR Midnight Ransom H106

CE	BW	WW	YW	MCE	Milk	MWW	CW	YG	Marb	REA	API	TI
2	1	27	57	1	9	23	-1.4	0.03	0.12	0.03	104	58

DSR Dakota Design W233



Reg. # Tattoo BD % Simm Color BW WW H/P/S
2489032 W233 3/5/09 1/2 SIM 1/2 ANGUS BLK 76

This is a Bon View New Design 878 daughter out of Lot 21.

CE	BW	WW	YW	MCE	Milk	MWW	CW	YG	Marb	REA	API	TI
*	0	34	70	*	8	25	4.3	0.19	0.35	-0.19	105	65



Reg. # Tattoo BD % Simm Color BW WW H/P/S
2489033 W232 3/5/09 1/2 SIM 1/2 ANGUS RED 84

This is a Bon View New Design 878 daughter out of Lot 22.

CE	BW	WW	YW	MCE	Milk	MWW	CW	YG	Marb	REA	API	TI
*	0	31	65	*	11	26	1.7	0.24	0.44	-0.2	106	64



DSR Sunshine T414



Reg. # **Tattoo** **BD** % **Simm** **Color** **BW** **WW** **H/P/S**
2430963 T414 3/18/07 PB RED 98 605 P

Branded Beef LCC L397L
MLC Dakota Sunrise P32
MLC Red Light M33
KBHR-K002
DSR Extra Red N171
DSR Extra Ransom H155

This cow is double polled and red. She had an IMF ratio of 109. AI'd on 6/1/09 to WS Beef Maker R13. Exposed to WS Beef Maker from 6/10/09 to 8/8/09. Ultrasound due date 4/13/2010.

CE	BW	WW	YW	MCE	Milk	MWW	CW	YG	Marb	REA	API	TI
6	4	30	59	7	6	21	4.3	0.02	0.24	-0.12	99	59

DSR On Track T459



Reg. # **Tattoo** **BD** % **Simm** **Color** **BW** **WW** **H/P/S**
2430974 T459 3/23/07 PB RED 76 620 P

OMF Long Cut J6
DSR Right Track P78
DSR Red Fox L7
Er Big Sky 545B
DSR Red Outlook G42
DSR Zita E8

This cow goes back to the E8 cow on the dam side and the L7 cow on the sire side. She also had a 101 ratio for IMF and 115 for REA. AI'd on 6/2/09 to WS Beef Maker R13. Exposed to DSR Signature T458 from 6/10/09 to 8/6/09. Ultrasound due date 4/13/2010.

CE	BW	WW	YW	MCE	Milk	MWW	CW	YG	Marb	REA	API	TI
6	-1	33	54	2	5	21	-6.4	-0.06	0.22	0.22	114	66

DSR Morning Queen T465



Reg. # **Tattoo** **BD** % **Simm** **Color** **BW** **WW** **H/P/S**
2430975 T465 3/24/07 PB RED 90 645 HOMO P

Branded Beef LCC L397L
MLC Dakota Sunrise P32
MLC Red Light M33
LRS Red Reality 33J
DSR Real Duchess L28
DSR Red Fayme E50

Here's a homozygous polled cow that goes back to the L28 cow. AI'd on 6/27/09 to WS Beef Maker R13. Exposed to WS Beef Maker R13 from 7/3/09 to 8/8/09. Ultrasound safe to AI.

CE	BW	WW	YW	MCE	Milk	MWW	CW	YG	Marb	REA	API	TI
6	0	28	56	5	8	22	-3.2	0.03	-0.03	-0.06	90	56



DSR Right Fortune T475



Reg. # **Tattoo** **BD** % **Simm** **Color** **BW** **WW** **H/P/S**
2430981 T475 3/28/07 PB RED 93 722 P

OMF Long Cut J6
DSR Right Track P78
DSR Red Fox L7
SRS Fortune 500
DSR Embrace Fortune K57
DSR Black Embrace G24

Here's a non-diluted and double polled cow out of the powerful K57 cow. AI'd on 6/1/09 to WS Beef Maker R13. Exposed to DSR Signature T458 from 6/10/09 to 8/6/09. Ultrasound safe to AI with a heifer calf.

CE	BW	WW	YW	MCE	Milk	MWW	CW	YG	Marb	REA	API	TI
5	4	54	88	2	1	28	19.8	0.16	0.23	-0.05	113	72

DSR Silhouette T473



Reg. # **Tattoo** **BD** % **Simm** **Color** **BW** **WW** **H/P/S**
2430980 T473 3/27/07 PB BLK 96 662 P

BH BS GW 600U 1744G
DWSR Commander
Opps Cactus Amber
LRS Big Country 37E
DSR Annie L66
E171

Here's a high marbling cow out of the L66 cow. AI'd on 6/1/09. Exposed to WS Beef Maker R13 from 5/16/09 to 8/8/09. Ultrasound due date 3/19/2010 with a bull calf.

CE	BW	WW	YW	MCE	Milk	MWW	CW	YG	Marb	REA	API	TI
8	4	43	77	4	5	27	14.8	0.05	0.39	0.08	121	71

DSR Real Stone T485



Reg. # **Tattoo** **BD** % **Simm** **Color** **BW** **WW** **H/P/S**
2430987 T485 3/31/07 PB BLK 89 643 P

LRS Red Reality 33J
DSR Real Break N29
DSR Purdee Nice L104
DSR Stone Edge G14
DSR Black Stone K163
DSR Black Cypris F80

She's double black and polled. AI'd on 6/26/2009 to PVF 6S17 HY Touchdown. Exposed to HSR Dakota Kid T804 from 7/3/09 to 7/17/09 and DSR Real Stone U248 from 7/1 to 8/8/09.

CE	BW	WW	YW	MCE	Milk	MWW	CW	YG	Marb	REA	API	TI
4	2	34	58	2	-5	12	-0.1	-0.09	0.12	0.2	102	59

DSR Black Ember T477



Reg. # Tattoo BD % Simm Color BW WW H/P/S
2430983 T477 3/29/07 1/2 SIM 1/2 ANGUS BLK 91 675 P

SAV 8180 Traveler 004
SAV Net Worth 4200
SAV May 2410
Bf 0K34 Daytona
DSR Feels Right P125
DSR Lucky Vib L63

This cow had a 113 REA ratio and a 105 weaning weight ratio. She goes back to the long sided P125 cow. AI'd on 6/6/09 to PVF 6S17 HY Touchdown. Exposed to HSR Dakota Kid T804 from 6/11/09 to 7/17/09 and DSR Real Stone U248 from 7/11 to 8/8/09. Ultrasound due date 4/3/2010 with a heifer calf.

CE	BW	WW	YW	MCE	Milk	MWW	CW	YG	Marb	REA	API	TI
*	1	41	85	*	9	30	14.6	0.11	0.15	0.3	96	64



DSR Mt Design T494



Reg. # Tattoo BD % Simm Color BW WW H/P/S
2430988 T494 4/2/07 1/2 SIM 1/2 ANGUS BLK 82 601 P

B/R New Design 036
Bon View New Design 878
Bon View Gammer 85
Sac Mr Mt T3G
DSR Miss Mt P67
DSR Selene F14

Here's an 878 daughter. AI'd on 6/5/09 to PVF 6S17 HY Touchdown. Exposed to HSR Dakota Kid T804 from 6/11/09 to 7/17/09. DSR Real Stone U248 7/1/09 to 8/8/09. Ultrasound safe to AI with a heifer calf.

CE	BW	WW	YW	MCE	Milk	MWW	CW	YG	Marb	REA	API	TI
*	0	30	59	*	7	22	-3	0.18	0.33	-0.09	104	62

DSR Midnight Track T500



Reg. # Tattoo BD % Simm Color BW WW H/P/S
2430989 T500 4/4/07 PB BLK 95 633 P

OMF Long Cut J6
DSR Right Track P78
DSR Red Fox L7
WHF Red Ransom 840E
DSR Midnight Ransom H106
DSR Polly T33

She's a double polled black cow with a red gene. She goes back to the H106 cow that has done a good job for us. AI'd on 6/6/09 to RC Club King 040R. Exposed to HSR Dakota Kid T804 from 6/11/09 to 7/17/09 and DSR Real Stone U248 from 7/1/09 to 8/8/09. Ultrasound due date 4/1/2010 with a bull calf.

CE	BW	WW	YW	MCE	Milk	MWW	CW	YG	Marb	REA	API	TI
5	4	35	54	3	5	22	-0.6	0.03	-0.03	0.08	87	55

DSR Best Break T514

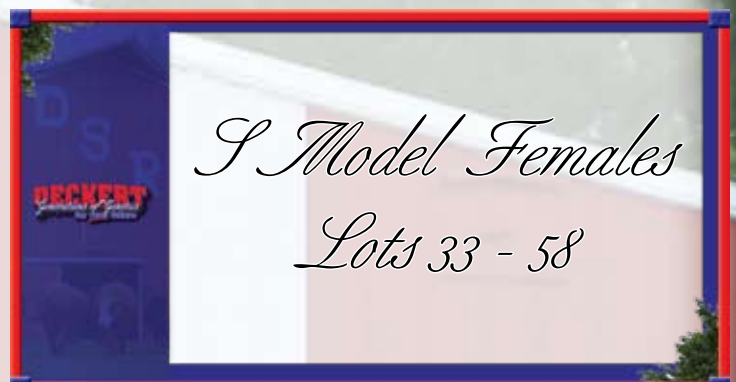


Reg. # Tattoo BD % Simm Color BW WW H/P/S
2430992 T514 4/8/07 PB BLK 90 670 P

LRS Red Reality 33J
DSR Real Break N29
DSR Purdee Nice L104
DSR Black Feather C44
DSR Black Lush G64
DSR Black Alta E81

This double black and polled cow posted a 104 weaning weight ratio and a 124 IMF ratio. AI'd on 6/6/09 to RC Club King 040R. Ultrasound due date 4/3/2010 with a bull calf.

CE	BW	WW	YW	MCE	Milk	MWW	CW	YG	Marb	REA	API	TI
4	3	40	69	-4	-1	19	7.8	0.08	0.33	0.06	107	67



DSR Best Sign W265



This is a DSR Signature T458 daughter out of Lot 32.

Reg. # Tattoo BD % Simm Color BW WW H/P/S
2489034 W265 3/17/09 PB BLK 80 P

CE	BW	WW	YW	MCE	Milk	MWW	CW	YG	Marb	REA	API	TI
5	0	33	61	1	3	19	-0.6	-0.01	0.21	0.14	104	64

DSR Fortune Fox S911



Reg. # Tattoo BD % Simm Color BW WW H/P/S
2372019 S911 4/4/06 PB BLK 89 659 P

OMF Long Cut J6
DSR Right Track P78
DSR Red Fox L7
SRS Fortune 500
DSR Premire Fortune
DSR Miss Premere G2

This cow goes back to the 325R cow family. She does have a red gene. AI'd on 6/5/09 to Mr NLC Superior S6018. Exposed to HSR Dakota Kid T804 from 6/11/09 to 7/17/09 and DSR Real Stone U248 from 7/1/09 to 8/8/09. Ultrasound due date 4/8/2010.

CE	BW	WW	YW	MCE	Milk	MWW	CW	YG	Marb	REA	API	TI
5	2	35	58	2	-1	17	0	0.06	0.22	-0.18	106	62



DSR Foxy W254



This is a MLC/FGS Black Solutions daughter out of Lot 33.

Reg. # Tattoo BD % Simm Color BW WW H/P/S
2489015 W254 3/14/09 PB BLK 77 P

CE	BW	WW	YW	MCE	Milk	MWW	CW	YG	Marb	REA	API	TI
7	1	31	61	2	5	21	0.7	0	0.26	0.23	117	64



Lot 34-
DSR Dream
Rain S717

DSR Free Ride S726

Reg. #	Tattoo	BD	% Simm	Color	BW	WW	H/P/S
35	2372030	S726 3/3/06	PB	RED	79	701	P

BH Tracker 998J
THSF Freedom 300N
SAFN Miss Zing 02H
WHF Red Ransom 840E
DSR Omega J197
DSR Miss Carmen E155

This cow has done everything right so far. Her first bull calf had ratios of 106 for birth weight, 114 for weaning, 110 for yearling, 109 for IMF and 102 for REA. Her dam has had 4 calves average 110 for IMF and 103 for REA. AI'd on 6/1/09 to TNT Gunner N208. Exposed to DSR Signature T458 from 6/10/09 to 8/6/09. Ultrasound safe to AI

CE	BW	WW	YW	MCE	Milk	MWW	CW	YG	Marb	REA	API	TI
5	0	48	90	7	13	37	16	-0.03	0.24	0.48	113	76

DSR Miss Freedom W238

Reg. #	Tattoo	BD	% Simm	Color	BW	WW	H/P/S
35a	2489016	W238 3/8/09	PB	RED	70		P

This is a DSR Signature T458 daughter out of Lot 35.

CE	BW	WW	YW	MCE	Milk	MWW	CW	YG	Marb	REA	API	TI
6	-1	37	72	6	10	29	3.6	-0.06	0.16	0.35	107	68



Lot 37a-
DSR Jackpot
W256



Lot 38 -
DSR Real
Thing S724

DSR Shimmertime W458

Reg. #	Tattoo	BD	% Simm	Color	BW	WW	H/P/S
38a	2489018	W458 4/18/09	PB	RED	82		P

This is an KBHR S077 Jake daughter out of Lot 38.

CE	BW	WW	YW	MCE	Milk	MWW	CW	YG	Marb	REA	API	TI
7	1	43	74	6	7	28	8	0.07	0.04	-0.06	99	65

DSR Dream Rain S717

Reg. #	Tattoo	BD	% Simm	Color	BW	WW	H/P/S
34	2372025	S717 2/28/06	3/4 SIM 1/4 ANGUS	RBF	82	634	P

Nichols Legacy G151
CNS Dream On L186
CNS Sheeza Dream 107W
B C C Bushwacker 41-93
DSR Black Rain P408
DSR Black Splash G10

This red blaze face cow has a unique red pedigree. You need to check out her U3 heifer, she is pretty nice. AI'd on 6/26/09 to WS Beef Maker R13. Exposed to WS Beef Maker from 7/3/09 to 8/8/09. Ultrasound safe to AI.

CE	BW	WW	YW	MCE	Milk	MWW	CW	YG	Marb	REA	API	TI
*	1	38	61	*	1	20	-1	0.05	0.3	0.12	111	69

DSR Extreme Fayme S710

Reg. #	Tattoo	BD	% Simm	Color	BW	WW	H/P/S
36	2372022	S710 2/24/06	PB	RED	79	656	P

BOZ Redcoat
Fr Result
Miss Fr J922
Branded Beef LCC L397L
DSR Branded Fayme P65
DSR Real Famye L21

Her first calf had a 106 weaning ratio. She goes back to the 325R cow. AI'd on 6/1/09 to WS Beef Maker R13. Exposed to WS Beef Maker from 6/10/09 to 8/8/09. Ultrasound due date 4/18/2010.

CE	BW	WW	YW	MCE	Milk	MWW	CW	YG	Marb	REA	API	TI
6	0	30	53	6	12	27	-6.3	0.05	0.06	0	96	60

DSR Miss Lucky Star S719

Reg. #	Tattoo	BD	% Simm	Color	BW	WW	H/P/S
37	2372026	S719 3/1/06	3/4 SIM 1/4 ANGUS	BLK	82	618	P

Black Irish Kansas
Black Shamrock E157
LII Ms Reba
B C C Bushwacker 41-93
DSR Extra Black P417
DSR Extra Ransom H155

Here's a double black and polled female. AI'd on 6/6/09 to RC Club King 040R. Exposed to HSR Dakota Kid T804 from 6/11/09 to 7/17/09 and DSR Real Stone U248 from 7/1/09 to 8/8/09. Ultrasound safe to AI with a heifer calf.

CE	BW	WW	YW	MCE	Milk	MWW	CW	YG	Marb	REA	API	TI
*	1	33	56	*	2	19	-2.5	-0.01	0.42	0.39	109	67

DSR Jackpot W256

Reg. #	Tattoo	BD	% Simm	Color	BW	WW	H/P/S
37a	2489017	W256 3/15/09	PB	BLK	82		P

This is an ESMJ Conservative MJ9365 daughter out of Lot 37.

CE	BW	WW	YW	MCE	Milk	MWW	CW	YG	Marb	REA	API	TI
9	0	40	66	6	1	21	2.1	-0.07	0.2	0.47	110	69

DSR Real Thing S724

Reg. #	Tattoo	BD	% Simm	Color	BW	WW	H/P/S
38	2372028	S724 3/3/06	3/4 SIM 1/4 RA	RED	78	665	P

GFI Brando H02
Branded Beef LCC L397L
LCHMN BWF Baldy G7001
Holden Hi-C 8128
DSR High Fantasy P418
RIV Fantasy 640F

This 3/4 blood cow will be very productive. AI'd on 6/2/09 to Wheatland Red Teddy 457P. Exposed to WS Beef Maker from 6/10/09 to 8/8/09. Ultrasound due date 4/13/2010.

CE	BW	WW	YW	MCE	Milk	MWW	CW	YG	Marb	REA	API	TI
*	0	36	61	*	8	26	-1.6	0.04	-0.21	-0.16	90	56

DSR Freedom Touch S783



Reg. # Tattoo BD % Simm Color BW WW H/P/S
2372047 S783 3/14/06 PB RED 78 626 P

BH Tracker 998J
THSF Freedom 300N
SAFN Miss Zing 02H
BH Right Time 520E
DSR Right Touch K159
E171

Here's a non-diluted and double polled cow. She does go back to Molley. AI'd on 6/1/09 to WS Beef Maker R13. Exposed to DSR Signature T458 from 6/10/09 to 8/6/09.

CE	BW	WW	YW	MCE	Milk	MWW	CW	YG	Marb	REA	API	TI
5	-1	36	68	6	6	24	2.1	-0.04	0.28	0.24	123	70



DSR Best Design S725



Reg. # Tattoo BD % Simm Color BW WW H/P/S
2372029 S725 3/3/06 1/2 SIM 1/2 ANGUS BLK 79 620 P

B/R New Design 036
Bon View New Design 878
Bon View Gammer 85
SS Milestone
DSR Moon Stone P62
DSR Moon Kissed 863K

This Sim-Angus cow had a 125 IMF ratio. AI'd on 6/5/09 to PVF 6S17 HY Touchdown. Exposed to HSR Dakota Kid T804 from 6/11/09 to 7/17/09 and DSR Real Stone U248 from 7/1/09 to 8/8/09. Ultrasound due date 4/3/2010 with a bull calf.

CE	BW	WW	YW	MCE	Milk	MWW	CW	YG	Marb	REA	API	TI
*	0	30	66	*	6	20	2	0.28	0.47	-0.29	107	66



DSR Dakota Flower W383



This is an HSR Dakota Kid T804 daughter out of Lot 40.

Reg. # Tattoo BD % Simm Color BW WW H/P/S
2489019 W383 4/3/09 3/4 SIM 1/4 ANGUS BLK 86 P

CE	BW	WW	YW	MCE	Milk	MWW	CW	YG	Marb	REA	API	TI
*	1	40	76	*	6	26	9.4	0.18	0.41	0.06	113	73

DSR Well Traveled S752



Reg. # Tattoo BD % Simm Color BW WW H/P/S
2372036 S752 3/10/06 1/2 SIM 1/2 ANGUS BLK 94 662 P

Sitz Traveler 8180
SAV 8180 Traveler 004
Boyd Forever Lady 8003
Gw Lucky Break 047G
DSR Lush L5
DSR Temptaion J39

Here's a 004 daughter that had a 123 ratio for IMF. Her first calf had a 102 weaning ratio. AI'd on 6/5/09 to PVF 6S17 HY Touchdown. Exposed to HSR Dakota Kid T804 from 6/11/09 to 7/17/09 and DSR Real Stone U248 from 7/1/09 to 8/8/09. Ultrasound due date 4/21/2010.

CE	BW	WW	YW	MCE	Milk	MWW	CW	YG	Marb	REA	API	TI
*	1	43	85	*	4	26	14	0.37	0.46	-0.25	110	72



DSR Dakota Lush S774



Reg. # Tattoo BD % Simm Color BW WW H/P/S
2372042 S774 3/12/06 PB BLK 85 665 P

SRS J914 Preferred Beef
ES Dakota NK68
ESK68
DSR Black Feather C44
DSR Black Lush G64
DSR Black Alta E81

S774's dam has weaned 10 calves at a weaning ratio of 106 and an IMF ratio of 113. AI'd on 6/5/09 to Sinclair Extra 4x13. Exposed to HSR Dakota Kid T804 from 6/11/09 to 7/17/09 and DSR Real Stone U248 from 7/1/09 to 8/8/09. Ultrasound due date 4/4/2010 with a heifer calf.

CE	BW	WW	YW	MCE	Milk	MWW	CW	YG	Marb	REA	API	TI
2	3	40	73	-4	6	26	9.9	0.07	0.08	-0.01	100	62



DSR Lady Freedom S788

Reg. # Tattoo BD % Simm Color BW WW H/P/S
2372048 S788 3/15/06 PB RED 90 662 P

BH Tracker 998J
THSF Freedom 300N
SAFN Miss Zing 02H
Mv Red Light 406
J135
OS Lady Luck 60F

We've been so impressed with the udder structure on these Freedoms. They all will make very functional cows. AI'd on 6/26/09 to WS Beef Maker R13. Exposed to WS Beef Maker 7/3/09 to 8/8/09. Ultrasound safe to AI.

CE	BW	WW	YW	MCE	Milk	MWW	CW	YG	Marb	REA	API	TI
5	1	42	81	6	7	28	12.7	0.07	-0.06	-0.09	89	62



Lot 44 -
DSR
Daydream
S771



Lot 45 -
DSR Pretty
Cut S803



Lot 46 -
DSR Peek-A-
Boo S804



DSR Miss Seen It W247

This is a WS Beef Maker R13 daughter out of Lot 46.

Reg. # 2489020 **Tattoo** W247 **BD** 3/12/09 **% Simm** PB **Color** BW RED **WW** 82 **H/P/S** P

CE	BW	WW	YW	MCE	Milk	MWW	CW	YG	Marb	REA	API	TI
8	2	45	71	1	5	28	6.9	-0.05	0.28	0.37	119	72



DSR I Spy W248

This is a WS Beef Maker R13 daughter out of Lot 46.

Reg. # 2489021 **Tattoo** W248 **BD** 3/12/09 **% Simm** PB **Color** BW RED **WW** 81 **H/P/S** P

CE	BW	WW	YW	MCE	Milk	MWW	CW	YG	Marb	REA	API	TI
8	2	45	71	1	5	28	6.9	-0.05	0.28	.37	119	72



DSR Moon Spice S794

Reg. # 2372050 **Tattoo** S794 **BD** 3/15/06 **% Simm** PB **Color** BW BLK **WW** 88 **H/P/S** P

Ellingson Blackperfector
GFI Magnum K52
Riv Blk Jose 43B 755G
PPSR Nophalt 20H
DSR Black Spice N131
DSR Fortune Spice K8

Here's a Magnum daughter that has a lot of potential. She had an IMF ratio of 124 and goes back to the N131 cow. AI'd on 6/6/09 to Mr NLC Superior S6018. Exposed to HSR Dakota Kid T804 from 6/11/09 to 7/17/09 and DSR Real Stone U248 7/1/09 to 8/8/09. Ultrasound safe to AI with a heifer calf.

CE	BW	WW	YW	MCE	Milk	MWW	CW	YG	Marb	REA	API	TI
2	2	40	71	0	4	24	7.9	0.04	0.32	0.1	103	68



DSR Sweet Thing W252

This is also a WS BeefMaker R13 daughter out of Lot 48.

Reg. # 2489022 **Tattoo** W252 **BD** 3/14/09 **% Simm** PB **Color** BW RED **WW** 82 **H/P/S** P

CE	BW	WW	YW	MCE	Milk	MWW	CW	YG	Marb	REA	API	TI
9	0	36	62	-3	-1	17	-1.5	-0.08	0.11	0.38	107	66



DSR Daydream S771

Reg. # 2372041 **Tattoo** S771 **BD** 3/12/06 **% Simm** PB **Color** BW BLK **WW** 77 **H/P/S** P

Nichols Legacy G151
CNS Dream On L186
CNS Sheeza Dream 107W
WHF Red Ransom 840E
DSR Maximum Ransom H188
DSR Maxine B-66

Daydream's first calf had a 110 weaning ratio and 116 IMF ratio. AI'd on 6/26/09 to SVF/NJC Mo Better M217. Exposed to HSR Dakota Kid T804 from 7/3/09 to 7/17/09 and DSR Real Stone U248 from 7/1/09 to 8/8/09. Ultrasound safe to AI.

CE	BW	WW	YW	MCE	Milk	MWW	CW	YG	Marb	REA	API	TI
10	-1	34	55	8	6	23	-6.2	-0.01	0.36	0.25	126	70



DSR Pretty Cut S803

Reg. # 2372052 **Tattoo** S803 **BD** 3/15/06 **% Simm** PB **Color** BW RED **WW** 77 **H/P/S** P

BH Tracker 998J
THSF Freedom 300N
SAFN Miss Zing 02H
OMF Long Cut J6
DSR Perfect Cut N60
DSR Illumine J22

I expect S803 to make a really good cow. AI'd on 6/1/09 to WS Beef Maker R13. Exposed to DSR Signature T458 from 6/10/09 to 8/6/09. Ultrasound due date 3/31/2010 with a heifer calf.

CE	BW	WW	YW	MCE	Milk	MWW	CW	YG	Marb	REA	API	TI
3	0	34	66	7	7	24	1.8	0.03	-0.17	-0.01	90	55



DSR Peek-A-Boo S804

Reg. # 2372053 **Tattoo** S804 **BD** 3/16/06 **% Simm** PB **Color** BW RED **WW** 94 **H/P/S** P

CNS Dream On L186
Remington Red Label Hr
HS Reflections J34
WHF Red Ransom 840E
DSR Hideaway K228
DSR Ellisia D103

This cow goes back to the K228 cow. There is some power behind the breeding in this cow. AI'd on 6/1/09 to TNT Gunner N208. Exposed to DSR Signature T458 from 6/10/09 to 8/6/09. Ultrasound safe to AI with a heifer calf.

CE	BW	WW	YW	MCE	Milk	MWW	CW	YG	Marb	REA	API	TI
3	5	44	74	5	7	29	13.6	0.06	0.2	0.13	97	65



DSR Butterfly Girl S821

Reg. # 2372058 **Tattoo** S821 **BD** 3/18/06 **% Simm** 3/4 SIM 1/4 RA **Color** BW RED **WW** 78 **H/P/S** P

PPSR Coal Black 65F
LRS Red Reality 33J
LRS Ms Prefd Stock 715G
Holden Hi-C 8128
DSR Island Girl P406
DSR Cookie M215

Here's a 3/4 cow whos first calf had a 101 ratio for weaning weight. AI'd on 6/2/09 to WS Beef Maker R13. Exposed to WS Beef Maker from 6/10/09 to 8/8/09. Ultrasound safe to AI with a heifer calf.

CE	BW	WW	YW	MCE	Milk	MWW	CW	YG	Marb	REA	API	TI
*	-1	23	51	*	-5	6	-7.3	-0.01	-0.16	0.15	88	52

DSR Spring Wind S826



Reg. # Tattoo BD % Simm Color BW WW H/P/S
2372060 S826 3/20/06 PB RED 98 662 P

BH Tracker 998J
THSF Freedom 300N
SAFN Miss Zing 02H
LRS Red Reality 33J
DSR Real Red L15
DSR Captured Red J172

This cow is packed with a bunch of powerful cows. Her first calf had a weaning ratio of 111. AI'd on 6/1/09 to WS Beef Maker R13. Exposed to WS Beef Maker from 6/10/09 to 8/8/09.

CE	BW	WW	YW	MCE	Milk	MWW	CW	YG	Marb	REA	API	TI
5	5	55	102	5	4	32	29.7	-0.07	-0.12	0.68	96	65



DSR April Rain S824



Reg. # Tattoo BD % Simm Color BW WW H/P/S
2372059 S824 3/19/06 PB RED 88 673 P

CNS Dream On L186
Remington Red Label Hr
HS Reflections J34
DSR Evolution J78
DSR April Evolution N42
DSR April F166

Her first calf had a 104 weaning weight ratio. AI'd on 6/1/09 to WS Beef Maker R13. Exposed to WS Beef Maker from 6/10/09 to 8/8/09. Not sure if AI, but due 3/14/2010 with a heifer calf.

CE	BW	WW	YW	MCE	Milk	MWW	CW	YG	Marb	REA	API	TI
4	2	37	64	4	10	28	3.9	0	-0.21	0.01	79	54



DSR Fancy Evolution S827

Reg. # Tattoo BD % Simm Color BW WW H/P/S
2372061 S827 3/20/06 PB RED 94 701 P

SRS Fortune 500
DSR Evolution J78
DSR Red DutcheSS C53
DSR Red Enticer H11
DSR Rebas Fancy K80
DSR Red Reba D19

Dusty Rose Simmentals in Sk. purchased the DSR Evolution bull from us. He has left us with some awesome females. AI'd on 6/2/09 to WS Beef Maker R13. Exposed to WS Beef Maker from 6/10/09 to 8/8/09. Ultrasound due date 4/1/2010 with a heifer calf.

CE	BW	WW	YW	MCE	Milk	MWW	CW	YG	Marb	REA	API	TI
10	3	43	80	1	7	28	14.7	0.09	-0.01	-0.12	95	62

DSR Fancy Free W417



This is also a WS Beef Maker R13 daughter out of Lot 51.

Reg. # Tattoo BD % Simm Color BW WW H/P/S
2489023 W417 4/10/09 PB RED 84 P

CE	BW	WW	YW	MCE	Milk	MWW	CW	YG	Marb	REA	API	TI
12	1	44	73	-2	5	28	7.2	-0.05	0.18	0.24	118	71

DSR Red Marodie S862



Reg. # Tattoo BD % Simm Color BW WW H/P/S
2372073 S862 3/24/06 PB RBF 88 713 P

CNS Dream On L186
Remington Red Label Hr
HS Reflections J34
DSR Red Tracer D184
DSR Draw It Red H140
DSR Ms Marodie F173

This is a direct daughter of the H140 cow. We sold a half brother to Stewart Ainsworth in AB. There is a lot of potential here. AI'd on 6/2/09 to WS Beef Maker R13. Exposed to DSR Signature T458 from 6/10/09 to 8/6/09. Ultrasound safe to AI with a heifer calf.

CE	BW	WW	YW	MCE	Milk	MWW	CW	YG	Marb	REA	API	TI
1	2	37	68	7	10	29	6.1	0.08	0.2	0.09	105	63



DSR Right Style S860



Reg. # Tattoo BD % Simm Color BW WW H/P/S
2372072 S860 3/23/06 PB RED 98 620 P

Er Big Sky 545B
WHF Red Ransom 840E
Er Miss Redline 40B
Bh Right Time 520E
DSR Impeccable Style H25
DSR Red DutcheSS C53

The Red Ransom females did a great job for us, this extremely deep bodied cow goes back to the 325R family. Her first calf had a weaning ratio of 113. AI'd on 6/2/09 to GCF Mr Amigo. Exposed to WS Beef Maker from 6/10/09 to 8/8/09. Ultrasound safe to AI with a heifer calf.

CE	BW	WW	YW	MCE	Milk	MWW	CW	YG	Marb	REA	API	TI
6	4	38	69	3	12	31	10.3	0.06	0.38	-0.05	113	68



DSR Annierock S871

Reg. # Tattoo BD % Simm Color BW WW H/P/S
2372078 S871 3/25/06 PB BLK 89 610 P

Black Irish Kansas
Black Shamrock E157
LII Ms Reba
LRS Big Country 37E
DSR Annie L66
E171

Here's a double black and polled cow. Her first calf had a 114 ratio for weaning weight. Take a look at her REA EPD of 70. AI'd on 6/27/09 to Mr NLC Superior S6018. Exposed to HSR Dakota Kid T804 from 7/3/09 to 7/17/09 and DSR Real Stone U248 from 7/1/09 to 8/8/09. Ultrasound safe to AI.

CE	BW	WW	YW	MCE	Milk	MWW	CW	YG	Marb	REA	API	TI
6	4	40	74	6	9	28	11.5	-0.11	0.1	0.7	113	63



Lot 55 -
DSR Prim
S936



Lot 56 -
DSR Dream
Romance
S869

DSR Shes Tempting S879

Reg. #	Tattoo	BD	% Simm	Color	BW	WW	H/P/S
57	2372081	S879 3/27/06	PB	BLK	82	653	P

SRS J914 Preferred Beef Here's a Dakota daughter that had an IMF ratio of 105. Her first calf had a weaning ratio of 115. AI'd on 6/5/09 to Sinclair Extra 4x13. Exposed to HSR Dakota Kid T804 from 6/11/09 to 7/17/09 and DSR Real Stone U248 from 7/1/09 to 8/8/09. Ultrasound safe to AI with a heifer calf.

ES Dakota NK68
ESK68
Er Black Cisco 532C
DSR Temptaion J39
DSR Miss Premere G2

CE	BW	WW	YW	MCE	Milk	MWW	CW	YG	Marb	REA	API	TI
4	2	44	79	-1	8	30	12.3	0.1	0.13	-0.07	114	67

DSR Extra Tempting W239

Reg. #	Tattoo	BD	% Simm	Color	BW	WW	H/P/S
57a	9643975	W239 3/9/09	1/2 SIM 1/2 ANGUS	BLK	72		P

This is also a Sinclair Extra 4X13 daughter out of Lot 57.

CE	BW	WW	YW	MCE	Milk	MWW	CW	YG	Marb	REA	API	TI
0	-1	27	54	0	6	20	-6.6	0	0.06	-0.04	97	56



Lot 59 -
DSR Snazzy
R772

DSR Prim S936

Reg. #	Tattoo	BD	% Simm	Color	BW	WW	H/P/S
55	2372102	S936 4/12/06	PB	BLK	88	649	P

LRS Red Reality 33J Here is a double black and polled cow that scanned for a 122 IMF ratio and a 106 REA ratio. AI'd on 6/5/09 to Mr NLC Superior S6018. Exposed to HSR Dakota Kid T804 from 6/11/09 to 7/17/09 and DSR Real Stone U248 from 7/1/09 to 8/8/09. Ultrasound due date 4/14/2010.

DSR Real Break N29
DSR Purdee Nice L104
3C Full Figures C288 Blk
DSR Hansom Figure K17
DSR Extra Ransom H155

CE	BW	WW	YW	MCE	Milk	MWW	CW	YG	Marb	REA	API	TI
7	2	34	46	0	-3	14	-7.8	-0.07	0.27	0.2	112	63

DSR Dream Romance S869

Reg. #	Tattoo	BD	% Simm	Color	BW	WW	H/P/S
56	2372077	S869 3/24/06	PB	BLK	83	599	P

Nichols Legacy G151 This double black and polled cow, had an IMF ratio of 121. AI'd on 6/5/09 to RC Club King 040R. Exposed to HSR Dakota Kid T804 from 6/11/09 to 7/17/09 and DSR Real Stone U248 from 7/1/09 to 8/8/09.

CNS Dream On L186
CNS Sheeza Dream 107W
SRS Fortune 500
DSR Romance J137
HPS Miss Impact B216

CE	BW	WW	YW	MCE	Milk	MWW	CW	YG	Marb	REA	API	TI
11	0	31	54	7	4	20	-5.2	0.09	0.42	-0.13	124	68

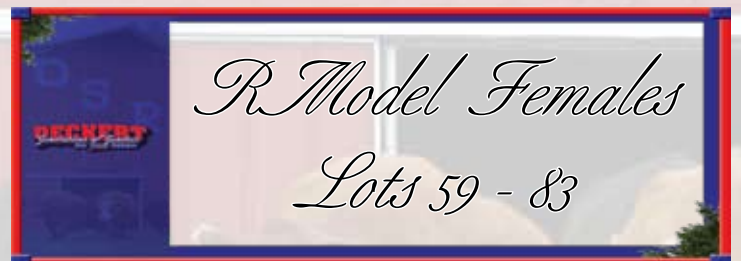
DSR Black Drama S928

Reg. #	Tattoo	BD	% Simm	Color	BW	WW	H/P/S
58	2372099	S928 4/10/06	PB	BLK	98	709	P

LRS Red Reality 33J This is double polled and black cow. She had a weaning weight ratio of 114. AI'd on 6/26/09 to Mr NLC Superior S6018. Exposed to HSR Dakota Kid T804 from 7/3/09 to 7/17/09 and DSR Real Stone U248 from 7/1/09 to 8/8/09. Ultrasound safe to AI with a heifer calf.

DSR Real Break N29
DSR Purdee Nice L104
PTL Jack Pot C588
DSR Jackee F143
Ek Hcc Dynamo Of Shadow

CE	BW	WW	YW	MCE	Milk	MWW	CW	YG	Marb	REA	API	TI
3	5	47	70	-2	-6	18	10.3	0.06	-0.11	0.08	71	57



DSR Snazzy R772

Reg. #	Tattoo	BD	% Simm	Color	BW	WW	H/P/S
59	2330408	R772 3/12/05	PB	RED	93	717	P

GFI Brando H02 Here is another cow that we have high expectations for. She has had two calves that had an average birthweight ratio of 110, weaning ratio of 105 and a REA ratio of 110. AI'd on 6/2/09 to WS Beef Maker R1. Exposed to WS Beef Maker from 6/10/09 to 8/8/09. Ultrasound safe to AI with a bull calf.

Branded Beef LCC L397L
LCHMN BWF Baldy G7001
RC Stinger 072K
DSR Red Bee M107
DSR Colorado Ransom G185

CE	BW	WW	YW	MCE	Milk	MWW	CW	YG	Marb	REA	API	TI
4	3	53	84	9	8	35	15.5	-0.01	-0.15	0.26	87	65

DSR Timeless R703



Reg. # Tattoo BD % Simm Color BW WW H/P/S
2330379 R703 2/19/05 1/2 SIM 1/2 ANGUS BLK 74 714 P

B/R New Design 036
Bon View New Design 878
Bon View Gammer 85
PPSR Nophalt 20H
DSR TimeleSS N23
DSR Selene F14

The Timeless cow had an awesome bull calf that was one of the lead bulls in the Dakota Xpress sale this year. She'll do a great job. AI'd on 6/5/09 to PVF 6S17 HY Touchdown. Exposed to HSR Dakota Kid T804 from 6/11/09 to 7/17/09 and DSR Real Stone U248 7/1/ to 8/8/09. Ultrasound safe to AI with a heifer calf.

CE	BW	WW	YW	MCE	Milk	MWW	CW	YG	Marb	REA	API	TI
*	-2	40	80	*	12	32	7.8	0.21	0.38	-0.07	120	74



Lot 60 -
DSR Timeless
R703

DSR Splendor W317



Reg. # Tattoo BD % Simm Color BW WW H/P/S
2489014 W317 3/26/09 1/2 SIM 1/2 ANGUS BLK 81 P

This is a PVF HY Touchdown daughter out of Lot 60.

CE	BW	WW	YW	MCE	Milk	MWW	CW	YG	Marb	REA	API	TI
*	-2	33	71	*	10	26	3	0.19	0.26	-0.01	110	74

DSR Emerald R796



Reg. # Tattoo BD % Simm Color BW WW H/P/S
2330414 R796 3/15/05 PB RED 85 677 P

PPSR Coal Black 65F
LRS Red Reality 33J
LRS Ms Prefd Stock 715G
OMF Long Cut J6
DSR Emmie N104
DSR Red Emmie H171

Emerald come from a very strong cow family. She herself has had two calves that had an average weaning ratio of 105 and the two also had a ratio of 115 for REA. She is the dam of the T333 heifer. AI'd on 6/2/09 to GCF Mr Amigo. Exposed to WS Beef Maker from 6/10/09 to 8/8/09. Ultrasound safe to AI with a bull calf.

CE	BW	WW	YW	MCE	Milk	MWW	CW	YG	Marb	REA	API	TI
5	2	51	93	-2	-7	18	20.9	0.02	0.31	0.42	116	74

DSR Stars Design R704



Reg. # Tattoo BD % Simm Color BW WW H/P/S
2330380 R704 2/20/05 1/2 SIM 1/2 ANGUS BLK 90 742 P

B/R New Design 036
Bon View New Design 878
Bon View Gammer 85
BS Mr Corrector 9111J
DSR Correct Star N76
BTS Miss Red Bone G713

This cow has had two calves that had an average weaning ratio of 108 and the one was our highest marbling heifer. AI'd on 6/6/09 to PVF 6S17 HY Touchdown. Exposed to HSR Dakota Kid T804 from 6/11/09 to 7/17/09 and DSR Real Stone U248 from 7/1/ to 8/8/09. Ultrasound safe to AI with a bull calf.

CE	BW	WW	YW	MCE	Milk	MWW	CW	YG	Marb	REA	API	TI
*	2	45	79	*	7	30	12.2	0.21	0.49	0.02	106	71

DSR Red Star W290



Reg. # Tattoo BD % Simm Color BW WW H/P/S
2489013 W290 3/22/09 PB RED 82 P

This is a Wheatland 740T daughter out of Lot 61.

CE	BW	WW	YW	MCE	Milk	MWW	CW	YG	Marb	REA	API	TI
6	1	45	84	3	0	22	14.2	-0.03	0.14	0.38	110	69

DSR Grand Edition R708



Reg. # Tattoo BD % Simm Color BW WW H/P/S
2330381 R708 2/22/05 PB RED 82 682 P

GFI Brando H02
Branded Beef LCC L397L
LCHMN BWF Baldy G7001
DSR Evolution J78
DSR First Edition N1
DSR Real Shimmer L1

Here's a cow with a great set of numbers to work off of. AI'd on 6/27/09 to GCF Mr Amigo. Exposed to WS Beef Maker from 7/3/09 to 8/8/09. Ultrasound safe to AI.

CE	BW	WW	YW	MCE	Milk	MWW	CW	YG	Marb	REA	API	TI
9	0	41	74	7	6	27	5.9	0.1	0.38	-0.09	125	75

DSR Bedazzeled R742



Reg. # Tattoo BD % Simm Color BW WW H/P/S
2330395 R742 3/7/05 PB RBF 97 651 P

3C Wally C240 Blk
LCHMAN Bodybuilder 7303F
LSF Momento D8
MV Red Light 406
J135
OS Lady Luck 60F

Here's your chance to pick up a young Body-builder cow. AI'd on 6/2/09 to GCF Mr Amigo. Exposed to WS Beef Maker from 6/10/09 to 8/8/09. Ultrasound safe to AI with a bull calf.

CE	BW	WW	YW	MCE	Milk	MWW	CW	YG	Marb	REA	API	TI
2	3	33	63	1	5	22	4.5	0.07	0.17	-0.08	83	59

DSR Perfect Balance R745



Reg. # Tattoo BD % Simm Color BW WW H/P/S
2330397 R745 3/8/05 PB BLK 89 690 P

Ellingson Blackperfector
GFI Magnum K52
Riv Blk Jose 43B 755G
SRS Fortune 500
DSR Harmony J13
DSR Lady Luck G127

This cow goes back to J13 who has weaned 9 calves at an average weaning ratio of 106. AI'd on 6/27/09 to Sinclair Extra 4x13. Exposed to HSR Dakota Kid T804 from 7/3/09 to 7/17/09 and DSR Real Stone U248 from 7/1/09 to 8/8/09. Ultrasound safe to AI.

CE	BW	WW	YW	MCE	Milk	MWW	CW	YG	Marb	REA	API	TI
3	1	34	55	0	7	24	-2.8	0.03	0.18	0.08	96	62

DSR Extraordinary R752



Reg. # Tattoo BD % Simm Color BW WW H/P/S
2330400 R752 3/9/05 PB BLK 88 667 P

LRS Preferred Stock 370C
SRS J914 Preferred Beef
SRS G733 Glimmer
SRS Fortune 500
DSR Romance J137
HPS Miss Impact B216

This young cow has had two calves that had an average weaning ratio of 102 and one of them had a 113 ratio for IMF. AI'd on 6/5/09 to RC Club King 040R. Exposed to HSR Dakota Kid T804 from 6/11/09 to 7/17/09 and DSR Real Stone U248 from 7/1/09 to 8/8/09. Ultrasound due date 4/4/2010 with a heifer calf.

CE	BW	WW	YW	MCE	Milk	MWW	CW	YG	Marb	REA	API	TI
7	1	36	68	1	7	24	5	0.08	0.33	-0.03	115	68



Lot 67 -
DSR Not A
Dream R749



DSR Not A Dream R749

Reg. # **Tattoo** **BD** % **Simm** **Color** **BW** **WW** **H/P/S**
2330398 R749 3/8/05 PB BLK 72 595 P

Nichols Legacy G151
CNS Dream On L186
CNS Sheeza Dream 107W
F Nichols Blackadvantage
DSR Black Mariah F79
DSR Marla D108

Here's a cow that produced a bull calf that had 132 IMF ratio and an adjusted ribeye of 14.8. Al'd on 6/5/09 to RC Club King 040R. Exposed to HSR Dakota Kid T804 from 6/11/09 to 7/17/09 and DSR Real Stone U248 from 7/109 to 8/8/09. Ultrasound safe to AI with a bull calf.

CE	BW	WW	YW	MCE	Milk	MWW	CW	YG	Marb	REA	API	TI
7	1	33	55	7	-2	15	-3.5	0.09	0.4	-0.05	117	67



Lot 68 -
DSR Black
Stone R767



DSR Black Stone R767

Reg. # **Tattoo** **BD** % **Simm** **Color** **BW** **WW** **H/P/S**
2330407 R767 3/12/05 PB BLK 98 623 P

Black Irish Kansas
DSR Stone Edge G14
Miss Molley 34Y
DSR Black Feather C44
DSR Black Cypris F80
DSR Cybil C3

We have had two other maternal sisters to this cow in our herd. They both have done a good job for us. Al'd on 6/6/09 to SVF/NJC Mo Better M217. Exposed to HSR Dakota Kid T804 from 6/11/09 to 7/17/09 and DSR Real Stone U248 from 7/1/09 to 8/8/09. Ultrasound safe to AI with a bull calf.

CE	BW	WW	YW	MCE	Milk	MWW	CW	YG	Marb	REA	API	TI
2	2	15	35	4	4	11	-13.5	-0.04	0.14	0.03	98	49



Lot 69 -
DSR Sweet
Dream R781



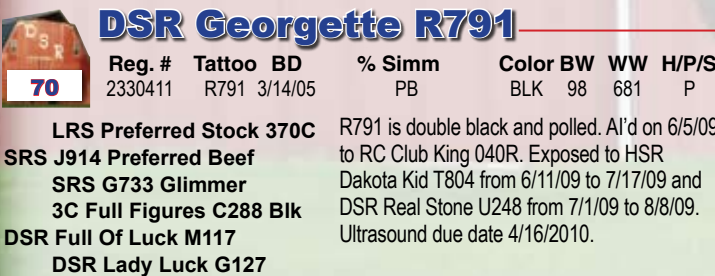
DSR Sweet Dream R781

Reg. # **Tattoo** **BD** % **Simm** **Color** **BW** **WW** **H/P/S**
2330409 R781 3/13/05 PB BLK 87 614 P

Nichols Legacy G151
CNS Dream On L186
CNS Sheeza Dream 107W
LRS Red Reality 33J
DSR Sweet On You M196
DSR American Successe G21

Here's a double black and polled cow. Al'd on 6/6/09 to RC Club King 040R. Exposed to HSR Dakota Kid T804 from 6/11/09 to 7/17/09 and DSR Real Stone from U248 7/1/ to 8/8/09. Ultrasound due date 4/18/2010.

CE	BW	WW	YW	MCE	Milk	MWW	CW	YG	Marb	REA	API	TI
10	2	38	64	5	-6	13	2.8	-0.03	0.17	0.16	112	64



DSR Georgette R791

Reg. # **Tattoo** **BD** % **Simm** **Color** **BW** **WW** **H/P/S**
2330411 R791 3/14/05 PB BLK 98 681 P

LRS Preferred Stock 370C
SRS J914 Preferred Beef
SRS G733 Glimmer
3C Full Figures C288 Blk
DSR Full Of Luck M117
DSR Lady Luck G127

R791 is double black and polled. Al'd on 6/5/09 to RC Club King 040R. Exposed to HSR Dakota Kid T804 from 6/11/09 to 7/17/09 and DSR Real Stone U248 from 7/1/09 to 8/8/09. Ultrasound due date 4/16/2010.

CE	BW	WW	YW	MCE	Milk	MWW	CW	YG	Marb	REA	API	TI
8	5	41	70	2	1	22	11.1	0.03	0.14	0.18	104	62



DSR Real Promo R850

Reg. # **Tattoo** **BD** % **Simm** **Color** **BW** **WW** **H/P/S**
2330430 R850 3/22/05 PB RED 89 659 P

PPSR Coal Black 65F
LRS Red Reality 33J
LRS Ms Prefrd Stock 715G
WHF Red Ransom 840E
DSR Red Promo H189
Miss Br Promotion Z58

This red cow goes back to a Red Ransom cow that has done a tremendous job for us. Al'd on 6/1/09 to WS Beef Maker R13. Exposed to WS Beef Maker from 6/10/09 to 8/8/09. Ultrasound safe to AI with a heifer calf.

CE	BW	WW	YW	MCE	Milk	MWW	CW	YG	Marb	REA	API	TI
7	2	39	70	-1	-3	16	6.6	-0.04	0.1	0.13	98	63

DSR Moon Dance R793



Reg. # Tattoo BD % Simm Color BW WW H/P/S
2330413 R793 3/15/05 PB RED 90 643 S

- Nichols Legacy G151
- CNS Dream On L186
- CNS Sheeza Dream 107W
- DS Black Zinger 141B
- DSR Moon Kissed 863K
- Ms Diamond G 63H

This is a non-diluted red and double polled female out of the Lot 153 cow. AI'd on 6/26/09 to SVF/NJC Mo Better M217. Exposed to WS Beef Maker from 7/3/09 to 8/8/09. Ultrasound safe to AI.

CE	BW	WW	YW	MCE	Milk	MWW	CW	YG	Marb	REA	API	TI
11	0	30	52	7	-2	13	-6.8	0.09	0.33	-0.11	121	66



DSR Black Flare R820



Reg. # Tattoo BD % Simm Color BW WW H/P/S
2330420 R820 3/19/05 PB BLK 94 645 P

- LRS Preferred Stock 370C
- SRS J914 Preferred Beef
- SRS G733 Glimmer
- LRS Big Country 37E
- DSR Black Country L109
- DSR Black Cypris F80

R820 goes back to the F80 cow family. She is double polled and black. Her calves had a weaning ratio of 102. Look up the T317 heifer, she scanned real well. AI'd on 6/26/09 to RC Club King 040R. Exposed to HSR Dakota Kid T804 from 7/3/09 to 7/17/09 and DSR Real Stone U248 from 7/1/ to 8/8/09. Ultrasound safe to AI.

CE	BW	WW	YW	MCE	Milk	MWW	CW	YG	Marb	REA	API	TI
5	3	39	79	0	7	26	13.8	0.01	0.18	0.44	110	65



DSR Tea Time R843



Reg. # Tattoo BD % Simm Color BW WW H/P/S
2330428 R843 3/20/05 PB BLK 87 608 P

- LRS Red Reality 33J
- DSR Real Break N29
- DSR Purdee Nice L104
- DSR Stone Edge G14
- DSR Teaberry J94
- DSR Maxine B-66

She's double black and polled. AI'd on 6/5/09 to RC Club King 040R. Exposed to HSR Dakota Kid T804 from 6/11/09 to 7/17/09 and DSR Real Stone U248 from 7/1/ to 8/8/09. Ultrasound safe to AI with a heifer calf.

CE	BW	WW	YW	MCE	Milk	MWW	CW	YG	Marb	REA	API	TI
4	1	32	60	2	-3	13	-0.3	0.08	0.11	-0.06	102	59



DSR Charming R851



Reg. # Tattoo BD % Simm Color BW WW H/P/S
2330431 R851 3/22/05 PB RED 87 688 P

- BH Tracker 998J
- THSF Freedom 300N
- SAFN Miss Zing 02H
- DSR Red Tracer D184
- DSR Red Cinch G155
- Miss Br Design Z32

We had a bull scan an adjusted REA of 17.2 out of this cow. AI'd on 6/2/09 to GCF Mr Amigo. Exposed to WS Beef Maker from 6/10/09 to 8/8/09. Ultrasound safe to AI with a bull calf.

CE	BW	WW	YW	MCE	Milk	MWW	CW	YG	Marb	REA	API	TI
3	0	36	70	9	7	25	3.5	-0.12	-0.14	0.24	92	59



DSR Perfect Red R866

Reg. # Tattoo BD % Simm Color BW WW H/P/S
2330438 R866 3/24/05 PB RED 93 634 P

- LRS Red Reality 33J
- DSR Real Break N29
- DSR Purdee Nice L104
- DSR Red Tracer D184
- DSR Shimmer J27
- DSR Black Call G27

Here's a non-diluted cow out of the J27 cow. J27 is just flat out a great cow. AI'd on 6/1/09 to WS Beef Maker R13. Exposed to DSR Signature T458 from 6/10/09 to 8/6/09. Ultrasound due date 4/13/2010.

CE	BW	WW	YW	MCE	Milk	MWW	CW	YG	Marb	REA	API	TI
3	3	26	39	2	0	13	-10.5	-0.01	0.09	-0.05	91	53



DSR Diamond Beef R869

Reg. # **Tattoo** **BD** % **Simm** **Color** **BW** **WW** **H/P/S**
2330440 R869 3/25/05 PB RED 87 736 P

GFI Brando H02
Branded Beef LCC L397L
Lchmn Bwf Baldy G7001
Gw-Cpl Red Alert
Ms Diamond G 63H
Rag Ms Americana F633

This double polled, red cow has the genetics to be highly productive. AI'd on 6/1/09 to WS Beef Maker R13. Exposed to WS Beef Maker from 6/10/09 to 8/8/09. Ultrasound safe to AI with a bull calf.

CE	BW	WW	YW	MCE	Milk	MWW	CW	YG	Marb	REA	API	TI
7	0	47	78	7	6	30	8.5	0.09	0.16	-0.19	105	71



DSR Miss Headline R896

Reg. # **Tattoo** **BD** % **Simm** **Color** **BW** **WW** **H/P/S**
2330449 R896 3/28/05 PB BLK 97 725 P

Ellingson Blackperfector
Brooks Above Par
STF Rabeca
SRS Fortune 500
DSR Fortune Rush K54
DSR Destinys Rush H40

Here's a cow that goes back to Black Joker's cow family. AI'd on 6/6/09 to Sinclair Extra 4x13. Exposed to HSR Dakota Kid T804 from 6/11/09 to 7/17/09 and DSR Real Stone U248 from 7/1/09 to 8/8/09. Ultrasound due date 4/4/2010 with a bull calf.

CE	BW	WW	YW	MCE	Milk	MWW	CW	YG	Marb	REA	API	TI
8	4	51	89	-3	-8	18	21.8	0.08	0.12	-0.09	107	67



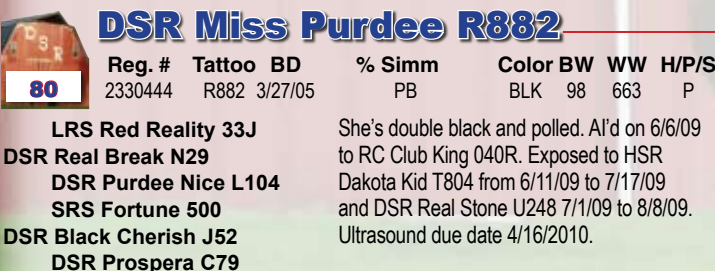
DSR Red Whisper R897

Reg. # **Tattoo** **BD** % **Simm** **Color** **BW** **WW** **H/P/S**
2330450 R897 3/28/05 PB RED 82 601 P

ER Big Sky 545B
WHF Red Ransom 840E
ER Miss Redline 40B
LRS Red Reality 33J
DSR Red Dazzel M19
DSR Red Dish K51

I look at this cow family and then with the Red Ransom mating, she should be an outstanding cow. AI'd on 6/1/09 to WS Beef Maker R13. Exposed to WS Beef Maker from 6/10/09 to 8/8/09.

CE	BW	WW	YW	MCE	Milk	MWW	CW	YG	Marb	REA	API	TI
6	0	33	70	2	5	21	4.2	-0.08	0.23	0.31	114	67



DSR Miss Purdee R882

Reg. # **Tattoo** **BD** % **Simm** **Color** **BW** **WW** **H/P/S**
2330444 R882 3/27/05 PB BLK 98 663 P

LRS Red Reality 33J
DSR Real Break N29
DSR Purdee Nice L104
SRS Fortune 500
DSR Black Cherish J52
DSR Prospera C79

She's double black and polled. AI'd on 6/6/09 to RC Club King 040R. Exposed to HSR Dakota Kid T804 from 6/11/09 to 7/17/09 and DSR Real Stone U248 7/1/09 to 8/8/09. Ultrasound due date 4/16/2010.

CE	BW	WW	YW	MCE	Milk	MWW	CW	YG	Marb	REA	API	TI
6	3	38	68	-1	-3	16	7.6	0.04	0.15	0.05	101	62



DSR Enchantment R893

Reg. # **Tattoo** **BD** % **Simm** **Color** **BW** **WW** **H/P/S**
2330448 R893 3/28/05 PB RED 81 647 P

MV Red Light 406
Hooks Red Quorum 55H
Hooks Applause 59F
Triglav BoldheRC Polled
DSR Dazzle K65
DSR Red Blush G79

Here's a maternal sister to the N185 cow. This cow has a lot of potential. AI'd on 6/2/09 to WS Beef Maker R13. Exposed to WS Beef Maker from 6/10/09 to 8/8/09. Ultrasound safe to AI with a bull calf.

CE	BW	WW	YW	MCE	Milk	MWW	CW	YG	Marb	REA	API	TI
7	-1	26	47	2	4	16	-11.1	0.12	0.11	-0.38	100	59

DSR Miss Fascination R913



Reg. # Tattoo BD % Simm Color BW WW H/P/S
2330453 R913 4/3/05 3/4 SIM 1/4 ANGUS BLK 97 665 P

PPSR Coal Black 65F
LRS Red Reality 33J

LRS Ms Prefd Stock 715G
B C C Bushwacker 41-93

DSR Miss Bushwacker N306

DSR Omega Country L140

This is a black cow with a red gene. She goes back to the N306 Sim-Angus cow. Al'd on 6/27/09 to PVF 6S17 HY Touchdown. Exposed to HSR Dakota Kid T804 from 7/3/09 to 7/17/09 and DSR Real Stone U248 from 7/1/09 to 8/8/09. Ultrasound safe to AI.

CE	BW	WW	YW	MCE	Milk	MWW	CW	YG	Marb	REA	API	TI
*	3	48	90	*	-10	14	21.2	0.1	0.31	0.16	101	71



DSR Perfect Stone R923



Reg. # Tattoo BD % Simm Color BW WW H/P/S
2330455 R923 4/5/05 PB BLK 96 718 P

STF Too Red G64
SS Milestone

WHF/DM Passionflower132G
LRS Big Country 37E

DSR Perfect Powder L19

DSR Powder B-110

This is a black cow with a red gene. She is a member of the DSR Black Powder cow family. Al'd on 6/6/09 to RC Club King 040R. Exposed to HSR Dakota Kid T804 from 6/11/09 to 7/17/09 and DSR Real Stone U248 from 7/1/09 to 8/8/09. Ultrasound safe to AI with a heifer calf.

CE	BW	WW	YW	MCE	Milk	MWW	CW	YG	Marb	REA	API	TI
3	5	44	80	2	-3	19	17.4	0.02	0.04	0.38	95	60



P Model Females - Lots 84-98

DSR Branded Fayme P65



Reg. # Tattoo BD % Simm Color BW WW H/P/S
2273412 P65 3/15/04 PB RED 80 613 P

GFI Brando H02

Branded Beef LCC L397L

LCHMN BWF Baldy G7001

LRS Red Reality 33J

DSR Real Fayme L21

DSR Red Fayme E50

Here's a member of the 325R cow family. Her mother is homozygous polled. She has weaned 3 calves with an average weaning ratio of 102. Al'd on 6/2/09 to WS Beef Maker R13. Exposed to WS Beef Maker from 6/10/09 to 8/8/09. Ultrasound safe to AI with a bull calf.

CE	BW	WW	YW	MCE	Milk	MWW	CW	YG	Marb	REA	API	TI
7	-2	31	56	6	8	24	-7.3	-0.03	0.03	0.2	107	62



DSR Pretty In Red P35



Reg. # Tattoo BD % Simm Color BW WW H/P/S
2273386 P35 3/10/04 PB RED 81 663 P

GFI Brando H02

Branded Beef LCC L397L

LCHMN BWF Baldy G7001

DSR Red Enticer H11

DSR Enticing LaSS K106

Harstads Miss 46Y

I have high expectations for this cow. Her mother has done a tremendous job for us. Al'd on 6/26/09 to GCF Mr Amigo. Exposed to WS Beef Maker from 7/3/09 to 8/8/09. Ultrasound safe to AI.

CE	BW	WW	YW	MCE	Milk	MWW	CW	YG	Marb	REA	API	TI
8	-1	34	59	8	10	27	-3.6	0.12	0.14	-0.25	112	65





Lot 86 -
DSR Sweet
Passion P18



DSR Sweet Passion P18

Reg. # Tattoo BD % Simm Color BW WW H/P/S
2273374 P18 3/7/04 PB RED 88 700 P

GFI Brando H02
Branded Beef LCC L397L
LCHMN BWF Baldy G7001
Sv Red Charlie
DSR Chanel K94
DSR Passion F77

Here's a daughter of the K94 cow, so she is a maternal sister to the DSR Real Passion, who was purchased by Trevor Craig at the ND Showcase sale. AI'd on 6/2/09 to WS Beef Maker R13. Exposed to WS Beef Maker from 6/10/09 to 8/8/09. Ultrasound due date 3/31/2010 with a bull calf.

CE	BW	WW	YW	MCE	Milk	MWW	CW	YG	Marb	REA	API	TI
8	0	45	73	8	12	34	5.8	0.03	-0.02	0.1	110	66



Lot 87 -
DSR Black
Rain P408



DSR Black Rain P408

Reg. # Tattoo BD % Simm Color BW WW H/P/S
2273396 P408 3/4/04 1/2 SIM 1/2 ANGUS BLK 96 639 P

Paramont Ambush 2172
B C C Bushwacker 41-93
RC Anita T Bando 918903
Burns Bull X339U
DSR Black Splash G10
DSR Black Ranees E30

This cow has a red gene, the S717 cow is out of her. P408 has had 2 of her progeny scan 107 for an average IMF ratio and 101 for REA ratio. AI'd on 6/5/09 to PVF 6S17 HY Touchdown. Exposed to HSR Dakota Kid T804 from 6/11/09 to 7/17/09 and DSR Real Stone U248 from 7/1/09 to 8/8/09. Ultrasound due date 4/18/2010.

CE	BW	WW	YW	MCE	Milk	MWW	CW	YG	Marb	REA	API	TI
*	0	34	60	*	4	21	-2	0.09	0.22	0.08	102	62



Lot 88 -
DSR Power
Glide P61



DSR Power Glide P61

Reg. # Tattoo BD % Simm Color BW WW H/P/S
2273410 P61 3/14/04 PB BLK 113 709 P

HC Power Drive 88H
KENCO/MF Powerline 204L
LBR Night Dream M22
LRS Red Reality 33J
DSR Midnight Flyer M232
DSR Black Call G27

Here's a double polled cow with a red gene. Her 3 calves have an average weaning ratio of 101. AI'd on 6/6/09 to SS Ebony's Grandmaster. Exposed to HSR Dakota Kid T804 from 6/11/09 to 7/17/09 and DSR Real Stone U248 from 7/1/09 to 8/8/09. Ultrasound due date 4/21/2010.

CE	BW	WW	YW	MCE	Milk	MWW	CW	YG	Marb	REA	API	TI
4	8	47	80	1	0	24	21	-0.01	0.17	0.48	104	62



Pvf-Bf Bf26 Black Joker
Bf 0K34 Daytona
Tj 23H
Gw Lucky Break 047G
DSR Lucky Vib L63
DSR Premonition E56

This cow is double polled and black. She has had 3 calves wean an a weaning ratio of 105 and 2 that scanned an average of 122 for REA. AI'd on 6/6/09 to Sinclair Extra 4x13. Exposed to HSR Dakota Kid T804 from 6/11/09 to 7/17/09 and DSR Real Stone U248 from 7/1/09 to 8/8/09. Ultrasound safe to AI with a bull calf.

CE	BW	WW	YW	MCE	Milk	MWW	CW	YG	Marb	REA	API	TI
2	2	33	61	-3	6	22	0.9	-0.11	-0.18	0.29	98	53



DSR Premire Mile P174

Reg. # Tattoo BD % Simm Color BW WW H/P/S
2273371 P174 4/1/04 PB BLK 92 633 P

STF Too Red G64
SS Milestone
WHF/DM Passionflower132G
SRS Fortune 500
DSR Premire Fortune
DSR Miss Premere G2

Here's a double polled cow with a red gene. AI'd on 6/6/09 to SVF/NJC Mo Better M217. Exposed to HSR Dakota Kid T804 from 6/11/09 to 7/17/09 and DSR Real Stone U248 from 7/1/09 to 8/8/09. Ultrasound safe to AI with a heifer calf.

CE	BW	WW	YW	MCE	Milk	MWW	CW	YG	Marb	REA	API	TI
6	1	16	38	3	3	11	-13.7	0.06	0.04	-0.27	100	49

DSR Lucky Stone P128



Reg. # Tattoo BD % Simm Color BW WW H/P/S
2273357 P128 3/22/04 PB BLK 97 634 P

STF Too Red G64
SS Milestone
WHF/DM Passionflower132G
PTL Jack Pot C588
DSR Lady Luck G127
DSR Jane U110

She's a black cow with a red gene. Al'd on 6/6/09 to Sinclair Extra 4x13. Exposed to HSR Dakota Kid T804 from 6/11/09 to 7/17/09 and DSR Real Stone U248 from 7/1/09 to 8/8/09. Ultrasound safe to AI with a heifer calf.

CE	BW	WW	YW	MCE	Milk	MWW	CW	YG	Marb	REA	API	TI
2	4	17	33	3	1	9	-12.2	-0.03	0.14	-0.03	87	48



DSR So Fine W376



This is a SSF Blk Bonview S295 daughter out of Lot 91.
Reg. # Tattoo BD % Simm Color BW WW H/P/S
2489009 W376 4/2/09 3/4 SIM 1/4 ANGUS BLK 78 P

Black Irish Kansas
DSR Stone Edge G14
Miss Molley 34Y
WHF Red Ransom 840E
DSR Maximum Ransom H188
DSR Maxine B-66

She's double black and polled. Al'd on 6/6/09 to RC Club King 040R. Exposed to HSR Dakota Kid T804 from 6/11/09 to 7/17/09 and DSR Real Stone U248 from 7/1/09 to 8/8/09. Ultrasound safe to AI with a heifer calf.

CE	BW	WW	YW	MCE	Milk	MWW	CW	YG	Marb	REA	API	TI
3	1	24	48	7	4	16	-7.4	-0.02	0.06	0.13	105	54

CE	BW	WW	YW	MCE	Milk	MWW	CW	YG	Marb	REA	API	TI
*	0	21	48	*	5	16	-7.8	0.04	0.44	0.09	107	62



DSR Triple Edge W280



Reg. # Tattoo BD % Simm Color BW WW H/P/S
2489010 W280 3/18/09 PB BLK 88 P

This is a Triple C Invasion R47K daughter out of Lot 92.

CE	BW	WW	YW	MCE	Milk	MWW	CW	YG	Marb	REA	API	TI
7	1	25	47	5	6	18	-8.1	-0.06	0.14	0.27	108	58



DSR Real Dazzel P203



Reg. # Tattoo BD % Simm Color BW WW H/P/S
2273379 P203 4/8/04 PB RED 83 640 P

PSPR Coal Black 65F
LRS Red Reality 33J
LRS Ms Prefd Stock 715G
Triglav BoldheRC Polled
DSR Dazzle K65
DSR Red Blush G79

Here's a full sister to the N185 cow. Al'd on 6/1/09 to WS Beef Maker R13. Exposed to WS Beef Maker 6/10/09 to 8/8/09. Ultrasound safe to AI with a bull calf.

CE	BW	WW	YW	MCE	Milk	MWW	CW	YG	Marb	REA	API	TI
9	-2	26	48	-1	-4	9	-12	-0.08	0.22	0.14	112	63

DSR Spectacular W377



Reg. # Tattoo BD % Simm Color BW WW H/P/S
2489011 W377 4/3/09 PB RED 83 P

This is a MLC Dakota Sunrise P32 daughter out of Lot 93.

CE	BW	WW	YW	MCE	Milk	MWW	CW	YG	Marb	REA	API	TI
8	0	30	58	6	5	20	-2.3	-0.08	0.16	0.19	105	63

DSR Hard Rock P201



Reg. # Tattoo BD % Simm Color BW WW H/P/S
2273378 P201 4/8/04 PB BLK 92 626 P

Black Irish Kansas
DSR Stone Edge G14
Miss Molley 34Y
Ptl Jack Pot C588
DSR Black Call G27
DSR Miss B-42

She's a double black and polled cow. Her dam weaned six calves that average a 110 weaning ratio. Al'd on 6/6/09 to RC Club King 040R. Exposed to HSR Dakota Kid T804 from 6/11/09 to 7/17/09 and DSR Real Stone U248 from 7/1/09 to 8/8/09. Ultrasound due date 4/3/2010 with a heifer calf.

CE	BW	WW	YW	MCE	Milk	MWW	CW	YG	Marb	REA	API	TI
0	6	29	53	6	-2	13	3.5	0.09	0.1	-0.16	87	50

DSR Moon Stone P62



Reg. # Tattoo BD % Simm Color BW WW H/P/S
2273411 P62 3/14/04 PB BLK 97 649 P

STF Too Red G64
SS Milestone
WHF/DM Passionflower132G
DS Black Zinger 141B
DSR Moon Kissed 863K
Ms Diamond G 63H

Moon Stone has a red gene. We've scanned 2 of her calves that averaged 133 for IMF and 103 for REA. Al'd on 6/26/09 to Mr NLC Superior S6018. Exposed to HSR Dakota Kid T804 from 7/3/09 to 7/17/09 and DSR Real Stone U248 from 7/1/09 to 8/8/09.

CE	BW	WW	YW	MCE	Milk	MWW	CW	YG	Marb	REA	API	TI
6	2	27	61	4	0	14	2.3	0.13	0.12	-0.13	110	56

DSR Hard Rock Kid W394



This is an HSR Dakota Kid T804 daughter out of Lot 94.
Reg. # Tattoo BD % Simm Color BW WW H/P/S
2489012 W394 4/4/09 PB BLK 94 P

CE	BW	WW	YW	MCE	Milk	MWW	CW	YG	Marb	REA	API	TI
6	3	38	67	6	3	22	7.2	0.08	0.22	0.12	111	64



DSR Shes All There P52

Reg. # Tattoo BD % Simm Color BW WW H/P/S
2273407 P52 3/13/04 PB RED 96 670 P

MV Red Light 406
Hooks Red Quorum 55H
Hooks Applause 59F
ER Big Sky 545B
DSR Red Outlook G42
DSR Zita E8

She goes back to the E8 cow family. AI'd on 6/2/09 to WS Beef Maker R13. Exposed to DSR Signature T458 from 6/10/09 to 8/6/09. Ultrasound due date 4/1/20010.

CE	BW	WW	YW	MCE	Milk	MWW	CW	YG	Marb	REA	API	TI
6	0	31	59	2	1	17	-1.6	0.22	0.36	-0.01	120	65



DSR Miss Mt P67

Reg. # Tattoo BD % Simm Color BW WW H/P/S
2273413 P67 3/15/04 PB BLK 104 687 P

GW Mr. Maternal 057D
SAC Mr Mt 73G
SPC Miss Tailer 47Z
Black Irish Kansas
DSR Selene F14
DSR Blk Super Girl D149

This is a double polled and black cow. AI'd on 6/6/09 to Mr NLC Superior S6018. Exposed to HSR Dakota Kid T804 from 6/11/09 to 7/17/09 and DSR Real Stone U248 from 7/1/09 to 8/8/09. Ultrasound safe to AI with a bull calf.

CE	BW	WW	YW	MCE	Milk	MWW	CW	YG	Marb	REA	API	TI
8	3	32	49	-2	-1	15	-4.8	-0.09	0.14	0.11	100	59



DSR Secret Cut P77

Reg. # Tattoo BD % Simm Color BW WW H/P/S
2273421 P77 3/16/04 PB RED 98 676 P

Meyers Red Top
OMF Long Cut J6
OMF Sadevce G-26
ER Mackfrid 550B
DSR Stone Secret G6
DSR Red Kama E43

P77 is double polled and red. AI'd on 6/1/09 to WS Beef Maker R13. Exposed to DSR Signature T458 from 6/10/09 to 8/6/09. Ultrasound due date 3/31/2010 with a bull calf.

CE	BW	WW	YW	MCE	Milk	MWW	CW	YG	Marb	REA	API	TI
2	2	33	43	2	-6	11	-9.1	0.1	0.04	-0.51	88	54



DSR Lucky Fortune N154

Reg. # Tattoo BD % Simm Color BW WW H/P/S
2225158 N154 3/26/03 PB BLK 106 684 P

Black Irish Kansas
Black Shamrock E157
LII Ms Reba
SRS Fortune 500
DSR Embrace Fortune K57
DSR Black Embrace G24

This cow has rose to the top of our herd. She has had 4 calves that have had a weaning ratio of 110 and 3 have been scanned with an average REA ratio of 106. She just puts all the numbers on the top end. AI'd on 6/6/09 to SVF/NJC Mo Better M217. Exposed to HSR Dakota Kid T804 from 6/11/09 to 7/17/09 and DSR Real Stone U248 from 7/1/09 to 8/8/09. Ultrasound safe to AI with a heifer calf.

CE	BW	WW	YW	MCE	Milk	MWW	CW	YG	Marb	REA	API	TI
9	4	47	81	6	11	34	15.9	-0.05	0.21	0.32	123	70

DSR Real Dazzel N185



Reg. # Tattoo BD % Simm Color BW WW H/P/S
2225168 N185 3/31/03 PB RED 86 573 P

PPSR Coal Black 65F
LRS Red Reality 33J
LRS Ms Prefd Stock 715G
Triglav BoldheRC Polled
DSR Dazzle K65
DSR Red Blush G79

Dazzel has done a tremendous job for us. She is the dam to the \$10,000 DSR Yukon Red bull. We also retained his full brother DSR Signature for our own use. The U91 heifer is their full sister will be included in our sale. AI'd on 6/1/09 to WS Beef Maker R13. Exposed to WS Beef Maker from 6/10/09 to 8/8/09. Ultrasound safe to AI with a heifer calf.

CE	BW	WW	YW	MCE	Milk	MWW	CW	YG	Marb	REA	API	TI
9	1	38	68	-1	-3	16	4.2	-0.03	0.07	0.21	103	63



DSR Sparkle W437

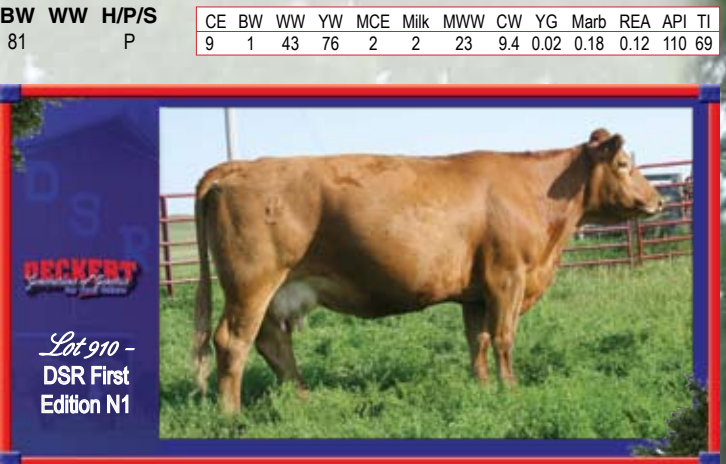
This is a KBHR S077 Jake daughter out of Lot 100.

Reg. # Tattoo BD % Simm Color BW WW H/P/S
2489004 W437 4/11/09 PB RED 81 P

SRS Fortune 500
DSR Evolution J78
DSR Red DutcheSS C53
LRS Red Reality 33J
DSR Real Shimmer L1
DSR Red Shimmer J162

Here's a cow that has proven herself. She's done a lot of things right: weaned 4 calves for an average weaning ratio of 108 and has had 2 calves scanned that averaged 118 for IMF and 105 for REA. AI'd on 6/2/09 to WS Beef Maker R13. Exposed to WS Beef Maker from 6/10/09 to 8/8/09. Ultrasound due date 4/4/2010.

CE	BW	WW	YW	MCE	Milk	MWW	CW	YG	Marb	REA	API	TI
9	0	33	66	-1	8	25	1.5	0.06	0.46	-0.03	132	73



DSR First Beef W270

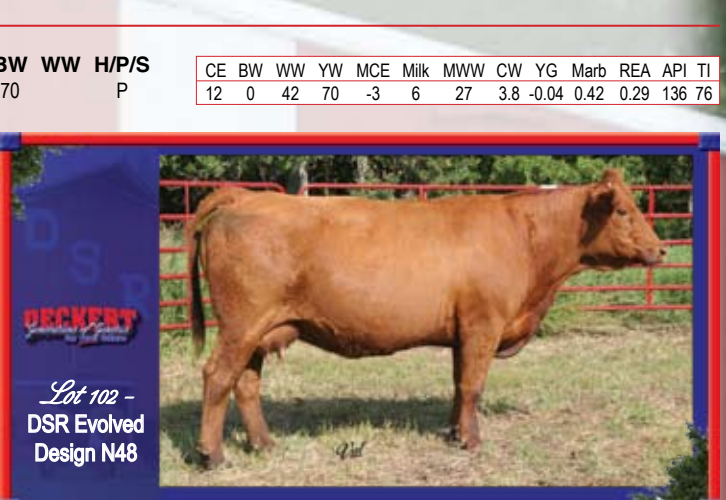
This is a WS Beef Maker R13 daughter out of Lot 101.

Reg. # Tattoo BD % Simm Color BW WW H/P/S
2489005 W270 3/18/09 PB RED 70 P

SRS Fortune 500
DSR Evolution J78
DSR Red DutcheSS C53
DSR Red Tracer D184
DSR Red Design G40
DSR JW Cleo

N48 has proven herself to be a great producer. She has 3 calves that had a ratio of 106 at weaning and 2 of them radioed 106 for IMF and also radioed 105 for REA. AI'd on 6/2/09 to WS Beef Maker R13. Exposed to DSR Signature from 6/10/09 to 8/6/09. Ultrasound due date 3/31/2010 with a heifer calf.

CE	BW	WW	YW	MCE	Milk	MWW	CW	YG	Marb	REA	API	TI
7	5	41	71	3	10	31	12.1	-0.01	0.06	0.11	99	61



DSR Evolved Design N48

Reg. # Tattoo BD % Simm Color BW WW H/P/S
2225205 N48 3/6/03 PB RED 113 647 P

LCHMN Black Asphalt 7068
PPSR Nophalt 20H
Miss Prickly Pear 615F
ER Black Cisco 532C
DSR Belara J107
DSR Super Powder G57

This double black and polled cow goes back to a stong cow family. Her 3 calves have a weaning ratio of 104, and had 2 scan with a 115 ratio for IMF and 101 for REA. AI'd on 6/5/09 to SVF/NJC Mo Better M217. Exposed to HSR Dakota Kid T804 from 6/11/09 to 7/17/09 and DSR Real Stone U248 from 7/1/09 to 8/8/09. Ultrasound due date 4/18/2010.

CE	BW	WW	YW	MCE	Milk	MWW	CW	YG	Marb	REA	API	TI
5	-2	18	36	1	13	22	-17.9	-0.02	0.08	-0.02	104	55



DSR Black Belara N108

Reg. # Tattoo BD % Simm Color BW WW H/P/S
2225150 N108 3/16/03 PB BLK 82 558 P



Lot 104 -
DSR Black
Spice N131



DSR Black Spice N131

Reg. # **Tattoo BD** % Simm **Color BW WW H/P/S**
2225156 N131 3/21/03 PB BLK 84 638 P

- Lchmn Black Asphalt 7068
- PPSR Nophalt 20H
- Miss Prickly Pear 615F
- SRS Fortune 500
- DSR Fortune Spice K8
- DSR Black Essence H17

Here's a double black and polled cow. She has had 2 calves scan an average 120 ratio for IMF. AI'd on 6/5/09 to SVF/NJC Mo Better M217 Exposed to HSR Dakota Kid T804 from 6/11/09 to 7/17/09 and DSR Real Stone U248 from 7/1/09 to 8/8/09.

CE	BW	WW	YW	MCE	Milk	MWW	CW	YG	Marb	REA	API	TI
5	0	32	64	1	4	20	0.3	0.05	0.18	0.11	106	63



Lot 105 -
DSR Black
Passion N150



DSR Black Passion N150

Reg. # **Tattoo BD** % Simm **Color BW WW H/P/S**
2225157 N150 3/25/03 PB BLK 97 603 P

- Black Irish Kansas
- DSR Stone Edge G14
- Miss Molley 34Y
- SV Red Charlie
- DSR Chanel K94
- DSR Passion F77

This black cow with a red gene has a very stong cow family. She has had 4 calves weaned at an average weaning ratio of 107 and 2 that scanned an average 106 REA ratio. AI'd on 6/6/09 to RC Club King 040R. Exposed to HSR Dakota Kid T804 from 6/11/09 to 7/17/09 and DSR Real Stone U248 from 7/1/09 to 8/8/09. Ultrasound due date 4/3/2010 with a heifer calf.

CE	BW	WW	YW	MCE	Milk	MWW	CW	YG	Marb	REA	API	TI
4	4	37	71	7	8	26	11.1	-0.01	0	0.21	101	57



Lot 106 -
DSR Red
Dazzel N161



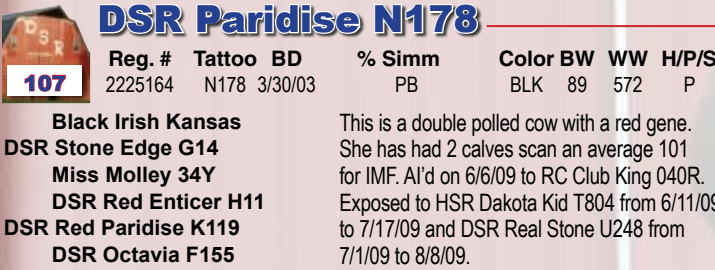
DSR Red Dazzel N161

Reg. # **Tattoo BD** % Simm **Color BW WW H/P/S**
2225161 N161 3/27/03 PB RED 100 601 P

- PPSR Coal Black 65F
- LRS Red Reality 33J
- LRS Ms Prefd Stock 715G
- DSR Red Enticer H11
- DSR Dazzel K128
- DSR Lady Luck G127

Here's a non-diluted and double polled cow. We've scanned 2 of her calves that had an average REA ratio of 106. AI'd on 6/2/09 to WS Beef Maker R13. Exposed to WS Beef Maker from 6/10/09 to 8/8/09. Ultrasound safe to AI with a heifer calf.

CE	BW	WW	YW	MCE	Milk	MWW	CW	YG	Marb	REA	API	TI
7	4	36	71	-1	-1	17	10.1	0.06	0.29	0.12	108	64



DSR Paridise N178

Reg. # **Tattoo BD** % Simm **Color BW WW H/P/S**
2225164 N178 3/30/03 PB BLK 89 572 P

- Black Irish Kansas
- DSR Stone Edge G14
- Miss Molley 34Y
- DSR Red Enticer H11
- DSR Red Paridise K119
- DSR Octavia F155

This is a double polled cow with a red gene. She has had 2 calves scan an average 101 for IMF. AI'd on 6/6/09 to RC Club King 040R. Exposed to HSR Dakota Kid T804 from 6/11/09 to 7/17/09 and DSR Real Stone U248 from 7/1/09 to 8/8/09.

CE	BW	WW	YW	MCE	Milk	MWW	CW	YG	Marb	REA	API	TI
4	2	24	54	7	6	17	-1.8	0.16	0.15	-0.5	102	55



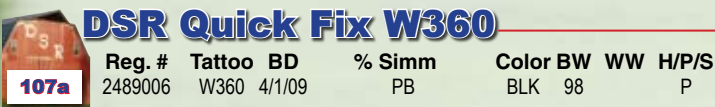
DSR TimeleSS N23

Reg. # **Tattoo BD** % Simm **Color BW WW H/P/S**
2225184 N23 3/2/03 PB BLK 95 645 P

- Lchmn Black Asphalt 7068
- PPSR Nophalt 20H
- Miss Prickly Pear 615F
- Black Irish Kansas
- DSR Selene F14
- DSR Blk Super Girl D149

Double black and polled. N23 has a good set of EPD's. AI'd on 6/6/09 to RC Club King 040R Exposed to HSR Dakota Kid T804 from 6/11/09 to 7/17/09 and DSR Real Stone U248 from 7/1/09 to 8/8/09. Ultrasound safe to AI with a heifer calf.

CE	BW	WW	YW	MCE	Milk	MWW	CW	YG	Marb	REA	API	TI
5	2	42	83	4	7	28	14.6	-0.01	-0.15	0.34	90	60



DSR Quick Fix W360

Reg. # **Tattoo BD** % Simm **Color BW WW H/P/S**
2489006 W360 4/1/09 PB BLK 98 P

This is a MLC/FGS Black Solutions daughter out of Lot 107.

CE	BW	WW	YW	MCE	Milk	MWW	CW	YG	Marb	REA	API	TI
6	2	30	67	4	8	23	6.3	0.08	0.23	0.07	114	61



DSR Extra Time W344

Reg. # **Tattoo BD** % Simm **Color BW WW H/P/S**
9644078 W344 3/31/09 1/2 SIM 1/2 ANGUS BLK 87 P

This is a Sinclair Extra 4X13 daughter out of Lot 108.

CE	BW	WW	YW	MCE	Milk	MWW	CW	YG	Marb	REA	API	TI
0	-1	27	57	0	5	19	-4.6	-0.05	-0.08	0.17	90	53

DSR Red Wine N187



Reg. # Tattoo BD % Simm Color BW WW H/P/S
2225169 N187 4/1/03 PB RED 87 609 P

PPSR Coal Black 65F
LRS Red Reality 33J
LRS Ms Prefd Stock 715G
DSR Red Flex E54
DSR Red Sheree H121
DSR Miss Super HERC D158

N187 is a double polled cow with several generations of red in her background. AI'd on 6/2/09 to WS Beef Maker R13. Exposed to WS Beef Maker 6/10/09 to 8/8/09. Ultrasound safe to AI with a bull calf.

CE	BW	WW	YW	MCE	Milk	MWW	CW	YG	Marb	REA	API	TI
7	-1	31	62	-2	-4	12	-1.7	-0.01	0.06	0.28	95	61



Lot 109 -
DSR Red
Wine N187

DSR Wonderland W396



*This is an MLC Dakota Sunrise
P32 daughter out of Lot 109.*

Reg. # Tattoo BD % Simm Color BW WW H/P/S
2489007 W396 4/6/09 PB RED 92 P

CE	BW	WW	YW	MCE	Milk	MWW	CW	YG	Marb	REA	API	TI
7	-1	28	59	6	5	20	-2.9	-0.08	0.08	0.26	98	

PPSR Coal Black 65F
LRS Red Reality 33J
LRS Ms Prefd Stock 715G
SRS Fortune 500
DSR Basia J56
DSR Black Lark E110

This is a double polled cow with a red gene. Her API and TI numbers are in the top 25% of the breed. AI'd on 6/6/09 to RC Club King 040R. Exposed to HSR Dakota Kid T804 from 6/11/09 to 7/17/09 and DSR Real Stone U248 from 7/1/09 to 8/8/09. Ultrasound safe to AI with a heifer calf.

CE	BW	WW	YW	MCE	Milk	MWW	CW	YG	Marb	REA	API	TI
7	0	35	62	-2	-7	10	-1.3	0.17	0.34	-0.14	113	68



Lot 110 -
DSR Back To
Basics N196

DSR Real Premo N2



Reg. # Tattoo BD % Simm Color BW WW H/P/S
2225173 N2 2/22/03 PB RED 88 627 P

PPSR Coal Black 65F
LRS Red Reality 33J
LRS Ms Prefd Stock 715G
LRS Big Country 37E
DSR Premo L72
DSR Black Whiff H48

N2 is a non-diluted and double polled cow. She has had 3 calves scan a 106 ratio for IMF. AI'd on 6/1/09 to GCF Mr Amigo. Exposed to WS Beef Maker from 6/10/09 to 8/8/09. Ultrasound safe to AI with a bull calf.

CE	BW	WW	YW	MCE	Milk	MWW	CW	YG	Marb	REA	API	TI
5	1	43	81	-3	-6	15	12.4	-0.05	-0.06	0.21	98	62



Lot 111 -
DSR Real
Premo N2

DSR Jaci N303



Reg. # Tattoo BD % Simm Color BW WW H/P/S
2225191 N303 2/23/03 1/2 SIM 1/2 ANGUS BLK 99 658 P

Paramont Ambush 2172
B C C Bushwacker 41-93
RC Anita T Bando 918903
WHF Red Ransom 840E
DSR Jaci L153
DSR Jackee F143

This Bushwacker daughter has weaned 4 calves with an average weaning ratio of 102 and we scanned 2 calves an average IMF ratio of 127 and a REA ratio of 109. AI'd on 6/6/09 to PVF 6S17 HY Touchdown. Exposed to HSR Dakota Kid T804 from 6/11/09 to 7/17/09 and DSR Real Stone U248 from 7/1/09 to 8/8/09. Ultrasound safe to AI with a bull calf.

CE	BW	WW	YW	MCE	Milk	MWW	CW	YG	Marb	REA	API	TI
*	4	53	93	*	6	32	23.8	0.29	0.2	0.12	86	64



Lot 112 -
DSR Jaci
N303



Lot 113 -
DSR Miss
Bushwacker
N306



DSR Miss Bushwacker N306

Reg. # **Tattoo BD** % Simm **Color BW WW H/P/S**
2225193 N306 2/28/03 1/2 SIM 1/2 ANGUS BLK 96 651 P

Paramont Ambush 2172
B C C Bushwacker 41-93
RC Anita T Bando 918903
LRS Big Country 37E
DSR Omega Country L140
DSR Omega Y-123

We had 2 calves scanned out of her and they had an average ratio of 125 for IMF. AI'd on 6/5/09 to PVF 6S17 HY Touchdown. Exposed to HSR Dakota Kid T804 from 6/11/09 to 7/17/09 and DSR Real Stone U248 from 7/1/09 to 8/8/09. Ultrasound safe to AI with a bull calf.

CE	BW	WW	YW	MCE	Milk	MWW	CW	YG	Marb	REA	API	TI
*	3	50	90	*	2	27	20.6	0.25	0.3	-0.09	94	67



DSR Miss Jacee W328

This is an SSF Bonview S295 daughter out of Lot 113.

Reg. # **Tattoo BD** % Simm **Color BW WW H/P/S**
2489008 W328 3/29/09 1/2 SIM 1/2 ANGUS BLK 69 0 P

CE	BW	WW	YW	MCE	Milk	MWW	CW	YG	Marb	REA	API	TI
0	-1	35	72	0	6	23	4.1	0.17	0.51	0.06	119	73



Lot 114 -
DSR Perfect
Black N87



DSR Perfect Black N87

Reg. # **Tattoo BD** % Simm **Color BW WW H/P/S**
2225216 N87 3/13/03 PB BLK 87 561 P

Lchmn Black Asphalt 7068
PPSR Nophalt 20H
Miss Prickly Pear 615F
DSR Black Powder Z-13
DSR Perfect Powder H59
DSR Prospera C79

This is a double polled and black cow. AI'd on 6/5/09 to RC Club King 040R. Exposed to HSR Dakota Kid T804 from 6/11/09 to 7/17/09 and DSR Real Stone U248 from 7/1/09 to 8/8/09. Ultrasound due date 4/2/20010 with a heifer calf.

CE	BW	WW	YW	MCE	Milk	MWW	CW	YG	Marb	REA	API	TI
3	1	30	62	0	1	16	1.7	0.09	0.07	0.01	97	57



DSR Perfect Cut N60

Reg. # **Tattoo BD** % Simm **Color BW WW H/P/S**
2225209 N60 3/8/03 PB RED 0 641 P

Meyers Red Top
OMF Long Cut J6
OMF Sadevce G-26
DSR Red Tracer D184
DSR Illumine J22
DSR Temptation G98

Perfect Cut has weaned 4 calves for an average weaning ratio of 103. S803 is her daughter. AI'd on 6/27/09 to GCF Mr Amigo. Exposed to DSR Signature T458 from 7/3/09 to 8/6/09. Ultrasound safe to AI.

CE	BW	WW	YW	MCE	Milk	MWW	CW	YG	Marb	REA	API	TI
-1	2	35	58	5	5	22	-0.7	0.12	0.07	-0.46	95	58



DSR Correct Star N76

Reg. # **Tattoo BD** % Simm **Color BW WW H/P/S**
2225213 N76 3/12/03 PB BLK 101 627 P

BS Mr Corrector 1110C
BS Mr Corrector 9111J
KS Miss First Star 7G
BTS Red Bone
BTS Miss Red Bone G713
BDV Reba E20

Here's a cow with a red gene and does have the ability to raise a big calf. AI'd on 6/27/09 to Sinclair Extra 4x13. Exposed to HSR Dakota Kid T804 from 7/3/09 to 7/17/09 and DSR Real Stone U248 from 7/1/09 to 8/8/09. Ultrasound safe to AI.

CE	BW	WW	YW	MCE	Milk	MWW	CW	YG	Marb	REA	API	TI
9	4	41	64	2	4	24	5.4	-0.07	-0.17	0.34	91	56



DSR Black Edge M174

Reg. # **Tattoo BD** % Simm **Color BW WW H/P/S**
2183001 M174 4/3/02 PB BLK 78 629 P

Black Irish Kansas
DSR Stone Edge G14
Miss Molley 34Y
WHF Red Ransom 840E
DSR Black Elsie H178
WS Miss Buck Ex E110

Here's a cow that puts it all together. First she has weaned 5 calves off for an average weaning ratio of 108. Keller's Broken Heart Ranch selected a herd bull from her, and we have two females in the sale out of her. Carcass and performance adds up to dollars. AI'd on 6/5/09 to SS Ebony's Grandmaster. Exposed to HSR Dakota Kid T804 from 6/11/09 to 7/17/09 and DSR Real Stone U248 from 7/1/09 to 8/8/09. Ultrasound due date 4/18/2010

CE	BW	WW	YW	MCE	Milk	MWW	CW	YG	Marb	REA	API	TI
3	2	33	71	7	12	28	7.5	0.06	0.33	0	123	66

M Models
Lots 99-116

DSR Red Surprise M203



Reg. # Tattoo BD % Simm Color BW WW H/P/S
2183016 M203 4/13/02 PB RBF 90 638 P

- Burns Bull X339U
- DSR Red Tracer D184
- DSR Mandy B-101
- WHF Red Ransom 840E
- DSR Hideaway K228
- DSR Elissia D103

This cow has been awesome. We've sold 3 bulls that averaged \$4800 and all her calves have had an average weaning ratio of 112. Her only daughter is the U234 heifer. Al'd on 6/2/09 to WS Beef Maker R13. Exposed to DSR Signature T458 from 6/10/09 to 8/6/09. Ultrasound safe to AI with a heifer calf.

CE	BW	WW	YW	MCE	Milk	MWW	CW	YG	Marb	REA	API	TI
2	3	35	72	8	19	36	10	0.07	0.04	-0.21	101	59



DSR Red Bee M107



Reg. # Tattoo BD % Simm Color BW WW H/P/S
2182978 M107 3/20/02 PB RED 104 719 P

- CCR Griffey
- RC Stinger 072K
- Miss RC 600U 501F
- WHF Red Ransom 840E
- DSR Colorado Ransom G185
- DSR C29

If you need a cow that put performance in her calves, here she is. With 5 calves weaned, they averaged 109. Be sure to check out the R772 cow, she is her daughter. Al'd on 6/2/09 to GCF Mr Amigo. Exposed to DSR Signature T458 from 6/10/09 to 8/6/09.

CE	BW	WW	YW	MCE	Milk	MWW	CW	YG	Marb	REA	API	TI
1	5	56	86	5	5	33	20.8	0	-0.04	0.41	85	64



DSR Red Sea M131



Reg. # Tattoo BD % Simm Color BW WW H/P/S
2182987 M131 3/24/02 PB RED 100 648 P

- CCR Griffey
- RC Stinger 072K
- Miss RC 600U 501F
- ER Big Sky 545B
- DSR Red Outlook G42
- DSR Zita E8

She and L8 go back to the same cow family. The performance is there - 5 calves at a 105 ratio. Al'd on 6/1/09 to WS Beef Maker R13. Exposed to DSR Signature T458 from 6/10/09 to 8/6/09. Ultrasound due date 3/31/2010 with a bull calf.

CE	BW	WW	YW	MCE	Milk	MWW	CW	YG	Marb	REA	API	TI
2	4	49	84	4	4	29	17.8	0.05	0.1	0.25	106	66



DSR Country Girl M163



Reg. # Tattoo BD % Simm Color BW WW H/P/S
2182996 M163 4/1/02 PB BLK 94 668 P

- DS Black Zinger 141B
- LRS Big Country 37E
- LRS Miss 600U 304C
- Burns Bull X339U
- E171
- DSR Mary Ann C182

We've had 5 natural maternal sisters in our herd. They've worked really well for us. She's had 6 calves with an average 101 weaning ratio. Al'd on 6/5/09 to SS Ebony's Grandmaster. Exposed to HSR Dakota Kid T804 from 6/11/09 to 7/17/09 and DSR Real Stone U248 from 7/1/09 to 8/8/09. Ultrasound safe to AI with a heifer calf.

CE	BW	WW	YW	MCE	Milk	MWW	CW	YG	Marb	REA	API	TI
2	3	44	77	0	2	24	12	-0.03	-0.05	0.36	102	61



DSR Country Kid W460



This is an HSR Dakota Kid T804 daughter out of Lot 121.

Reg. # Tattoo BD % Simm Color BW WW H/P/S
2488695 W460 4/25/09 PB BLK 92 P

CE	BW	WW	YW	MCE	Milk	MWW	CW	YG	Marb	REA	API	TI
2	7	2	46	80	2	4	27	12.7	0.03	0.15	0.38	118



DSR Red Dazzel M19

Reg. # **Tattoo BD** % Simm **Color BW WW H/P/S**
2183007 M19 3/3/02 PB RED 63 598 P

- PPSR Coal Black 65F
- LRS Red Reality 33J
- LRS Ms Prefd Stock 715G
- BOZ Redcat D162
- DSR Red Dish K51
- DSR Vesta E106

She's out of the K51 cow and is made the same way. I think she has the potential to raise a great one. Her two daughters in the sale seem to be working well. AI'd on 6/1/09 to GCF Mr Amigo. Exposed to WS Beef Maker from 6/10/09 to 8/8/09. Ultrasound safe to AI with a heifer calf.

CE	BW	WW	YW	MCE	Milk	MWW	CW	YG	Marb	REA	API	TI
7	-2	31	59	-2	-2	13	-5	-0.06	0.12	0.15	110	64



DSR Sweet On You M196

Reg. # **Tattoo BD** % Simm **Color BW WW H/P/S**
2183011 M196 4/9/02 PB BLK 110 670 P

- PPSR Coal Black 65F
- LRS Red Reality 33J
- LRS Ms Prefd Stock 715G
- G&L Blackfoot 716D
- DSR American SuccesS G21
- DSR Angie X-49

She's black and double polled. AI'd on 6/5/09 to Mr NLC Superior S6018. Exposed to HSR Dakota Kid T804 from 6/11/09 to 7/17/09 and DSR Real Stone U248 from 7/1/09 to 8/8/09. Ultrasound safe to AI with a heifer calf.

CE	BW	WW	YW	MCE	Milk	MWW	CW	YG	Marb	REA	API	TI
6	5	46	81	-1	-12	11	18.5	0.05	-0.02	0.19	93	59



DSR Extra Sweet W347

This is a Sinclair Extra 4X13 daughter out of Lot 123.

Reg. # **Tattoo BD** % Simm **Color BW WW H/P/S**
9644081 W347 3/31/09 1/2 SIM 1/2 ANGUS BLK 82 P

CE	BW	WW	YW	MCE	Milk	MWW	CW	YG	Marb	REA	API	TI
0	2	31	59	0	-4	11	0.4	-0.02	-0.01	0.09	79	



DSR Ginger M228

Reg. # **Tattoo BD** % Simm **Color BW WW H/P/S**
2183020 M228 4/18/02 PB RED 82 604 P

- GFI Premium H013
- KBHR-K002
- KBHR-F169
- DSR Red Tracer D184
- DSR Red Resolution G148
- DSR Ginny Z-137

M228 is double red and polled. AI'd on 6/2/09 to WS Beef Maker R13. Exposed to WS Beef Maker from 6/10/09 to 8/8/09. Ultrasound safe to AI with a bull calf.

CE	BW	WW	YW	MCE	Milk	MWW	CW	YG	Marb	REA	API	TI
3	0	19	43	4	6	15	-11.9	-0.08	0.06	0.13	93	53



DSR Real Cinch M167

Reg. # **Tattoo BD** % Simm **Color BW WW H/P/S**
2182998 M167 4/1/02 PB RED 90 588 P

- PPSR Coal Black 65F
- LRS Red Reality 33J
- LRS Ms Prefd Stock 715G
- DSR Red Tracer D184
- DSR Red Cinch G155
- Miss Br Design Z32

Dark cherry red and double polled. AI'd on 6/1/09 to WS Beef Maker R13. Exposed to WS Beef Maker from 6/10/09 to 8/8/09. Not sure if AI, but ultrasound says it's a heifer calf.

CE	BW	WW	YW	MCE	Milk	MWW	CW	YG	Marb	REA	API	TI
5	-1	20	41	1	-3	7	-14.5	-0.04	-0.09	0.15	89	50



DSR Red Picture M23

Reg. # **Tattoo BD** % Simm **Color BW WW H/P/S**
2183021 M23 3/4/02 PB RED 82 648 P

- PPSR Coal Black 65F
- LRS Red Reality 33J
- LRS Ms Prefd Stock 715G
- Triglav BoldheRC Polled
- DSR Bold Red K26
- DSR Draw It Red H140

She goes back to the H140 cow family. The Kunkel Brothers selected a son out of her for \$7500. Her 5 calves have an average ratio of 103. AI'd on 6/26/09 to WS Beef Maker R13. Exposed to WS Beef Maker from 7/3/09 to 8/8/09. Ultrasound safe to AI.

CE	BW	WW	YW	MCE	Milk	MWW	CW	YG	Marb	REA	API	TI
9	2	40	82	-1	0	20	14.4	0.09	0.05	0.1	103	64

DSR Real Surprise M32



Reg. # Tattoo BD % Simm Color BW WW H/P/S
2183033 M32 3/6/02 PB RED 89 598 P

- PPSR Coal Black 65F
- LRS Red Reality 33J
- LRS Ms Prefd Stock 715G
- DSR Super Bear D21
- DSR Red Surprise K39
- DSR Stone Secret G6

Here's a dark red and double polled cow. Her calves have an average weaning ratio of 102. AI'd on 6/2/09 to WS Beef Maker R13. Exposed to WS Beef Maker from 6/10/09 to 8/8/09. Ultrasound due date 3/31/2010 with a bull calf.

CE	BW	WW	YW	MCE	Milk	MWW	CW	YG	Marb	REA	API	TI
5	-1	28	55	0	-1	13	-5.9	-0.04	0.35	0.31	112	66



DSR Good Thing W287

This is a Wheatland 740T daughter out of Lot 127.

Reg. # Tattoo BD % Simm Color BW WW H/P/S
2489002 W287 3/20/09 PB RED 86 P

CE	BW	WW	YW	MCE	Milk	MWW	CW	YG	Marb	REA	API	TI
6	2	39	72	4	2	21	7.7	-0.02	0.16	0.32	106	65



DSR Right Detail M45

Reg. # Tattoo BD % Simm Color BW WW H/P/S
2183037 M45 3/9/02 PB RED 92 667 P

- LCHMN Black Asphalt 7068
- PPSR Nophalt 20H
- Miss Prickly Pear 615F
- Nichols BLK Destiny D12
- DSR Black Detail J19
- DSR Black Splash G10

The M45 cow is non-diluted and double polled. I think this cow has a lot of potential. AI'd on 6/27/09 to GCF Mr Amigo. Exposed to DSR Signature T458 from 7/3/09 to 8/6/09. Ultrasound safe to AI.

CE	BW	WW	YW	MCE	Milk	MWW	CW	YG	Marb	REA	API	TI
5	2	39	74	1	2	21	9.9	0.09	0.12	0.11	107	63



DSR Lady Stinger M59

Reg. # Tattoo BD % Simm Color BW WW H/P/S
2183041 M59 3/12/02 PB RED 110 680 P

- CCR Griffey
- RC Stinger 072K
- Miss RC 600U 501F
- Mv Red Light 406
- J135
- OS Lady Luck 60F

Here's a double polled cow that has produced some nice females. Her calves average weaning ratio is 102. AI'd on 6/26/09 to WS Beef Maker R13. Exposed to WS Beef Maker from 7/3/09 to 8/8/09. Ultrasound due date 4/23/2010.

CE	BW	WW	YW	MCE	Milk	MWW	CW	YG	Marb	REA	API	TI
0	6	49	82	4	-2	23	20.2	0.12	0.07	-0.12	86	61



DSR Vibrant Cat M44

Reg. # Tattoo BD % Simm Color BW WW H/P/S
2183036 M44 3/8/02 PB RBF 94 570 P

- NLC 64Y Tomcat
- BOZ Redcat D162
- WBR Miss Jounior 2Z
- DSR Red Flex E54
- DSR Vibrant Red H116
- Harstads Miss 46Y

This double polled is very easy keeping and has a very productive cow family. AI'd on 6/1/09 to GCF Mr Amigo. Exposed to DSR Signature T458 from 6/10/09 to 8/6/09. Ultrasound due date 3/28/2010 with a heifer calf.

CE	BW	WW	YW	MCE	Milk	MWW	CW	YG	Marb	REA	API	TI
6	1	20	39	1	8	18	-12.4	0.1	0.16	-0.41	94	54



DSR Break Dance M95

Reg. # Tattoo BD % Simm Color BW WW H/P/S
2183059 M95 3/18/02 PB BLK 85 588 P

- LCHMN Lucky Buck 7049C
- Gw Lucky Break 047G
- Gw Miss 600U 1351C
- DSR Black Powder Z-13
- DSR Black Melody G70
- DSR Emily A-132

Here's a double black and polled cow that goes back to a very good cow. AI'd on 6/5/09 to RC Club King 040R. Exposed to HSR Dakota Kid T804 from 6/11/09 to 7/17/09 and DSR Real Stone U248 from 7/1/09 to 8/8/09. Ultrasound safe to AI with a bull calf.

CE	BW	WW	YW	MCE	Milk	MWW	CW	YG	Marb	REA	API	TI
7	-2	21	43	1	6	17	-13.7	0.15	0.21	-0.15	105	59



DSR Miss Redcat W255

This is a DSR Yukon Red S734 daughter out of Lot 130.

Reg. # Tattoo BD % Simm Color BW WW H/P/S
2489003 W255 3/15/09 PB RED 77 P

CE	BW	WW	YW	MCE	Milk	MWW	CW	YG	Marb	REA	API	TI
7	1	30	59	4	6	21	-0.4	0.08	0.09	-0.09	96	



DECKERT
Generations of Genetics
for your future

Lot 132 -
DSR No
Stress M65



DSR No Stress M65

Reg. # **Tattoo** **BD** % **Simm** **Color** **BW** **WW** **H/P/S**
2183043 M65 3/14/02 PB BLK 116 614 P

- G&L Avalanche 149F
- Drake Stress Free
- Drake Freedom
- DSR Quattro C25
- DSR Black Raneë E30
- Miss Dittus Ranch 130T

Here's a cow that we have used for our Sim-Angus program a lot. Kenny Hoffer bought the high selling percentage bull at the Dakota Xpress sale in 08 out of her. AI'd on 6/6/09 to Sinclair Extra 4x13. Exposed to HSR Dakota Kid T804 from 6/11/09 to 7/17/09 and DSR Real Stone U248 from 7/1/09 to 8/8/09. Ultrasound safe to AI with a bull calf.

CE	BW	WW	YW	MCE	Milk	MWW	CW	YG	Marb	REA	API	TI
5	5	44	80	0	6	28	17.6	0.09	-0.08	0.27	90	58



DECKERT
Generations of Genetics
for your future

Lot 133 -
DSR Red Dust
M81



DSR Red Dust M81

Reg. # **Tattoo** **BD** % **Simm** **Color** **BW** **WW** **H/P/S**
2183051 M81 3/16/02 PB RED 87 590 P

- DSR Red Enticer H11
- DSR Enticeing K101
- DSR Red Fayme E50
- DSR Black Powder Z-13
- DSR Miss Angel Dust D78
- DSR Angie X-49

This is a non-diluted and double polled cow. She has raised 5 calves for a 104 weaning ratio. AI'd on 6/2/09 to WS Beef Maker R13. Exposed to DSR Signature T458 from 6/10 to 8/6/09. Ultrasound due date 3/29/2010 with a bull calf.

CE	BW	WW	YW	MCE	Milk	MWW	CW	YG	Marb	REA	API	TI
8	-1	17	36	-2	18	26	-17.5	-0.07	0.22	-0.06	110	59



DECKERT
Generations of Genetics
for your future

Lot 134 -
DSR Polly Ann
L212



DSR Polly Ann L212

Reg. # **Tattoo** **BD** % **Simm** **Color** **BW** **WW** **H/P/S**
2135251 L212 4/11/01 PB BLK 89 629 P

- Black Irish Kansas
- DSR Stone Edge G14
- Miss Molley 34Y
- WHF Red Ransom 840E
- DSR Midnight Ransom H106
- DSR Polly T33

This is a maternal sister to K18. Both these females are very productive. L212's 6 weaned calves have had an average ratio of 105. AI'd on 6/6/09 to RC Club King 040R. Exposed to HSR Dakota Kid T804 from 6/11/09 to 7/17/09 and DSR Real Stone U248 from 7/1/09 to 8/8/09. Ultrasound due date 4/4/2010.

CE	BW	WW	YW	MCE	Milk	MWW	CW	YG	Marb	REA	API	TI
3	1	26	56	7	11	24	-2.6	0.13	0.14	-0.13	105	58



DECKERT
Generations of Genetics
for your future

Lot 134a -
This is aWS Beef Maker R13
daughter out of Lot 134.



DSR Twinkle W407

Reg. # **Tattoo** **BD** % **Simm** **Color** **BW** **WW** **H/P/S**
9644141 W407 4/7/09 PB BLK 62 P

CE	BW	WW	YW	MCE	Milk	MWW	CW	YG	Marb	REA	API	TI
9	0	36	62	2	7	26	-0.8	-0.02	0.25	0.24	123	68



DECKERT
Generations of Genetics
for your future

Lot 135 -
DSR Real
Duchess L28



DSR Real Duchess L28

Reg. # **Tattoo** **BD** % **Simm** **Color** **BW** **WW** **H/P/S**
2135256 L28 3/7/01 PB RED 0 647 HOMO P

- PPSR Coal Black 65F
- LRS Red Reality 33J
- LRS Ms Prefd Stock 715G
- Polled Hercules A7
- DSR Red Fayme E50
- DSR Red Duchess C53

This is a cow that goes back to the 325R cow family. There is a lot of cattle around the country that go back to this family. She is homozygous polled. AI'd on 6/2/09 to WS Beef Maker R13. Exposed to WS Beef Maker from 6/10/09 to 8/8/09. Ultrasound safe to AI with a bull calf.

CE	BW	WW	YW	MCE	Milk	MWW	CW	YG	Marb	REA	API	TI
5	-2	24	51	-4	3	15	-9.1	0.04	0	0.09	92	56

DSR Annie L66



Reg. # Tattoo BD % Simm Color BW WW H/P/S
2135275 L66 3/15/01 PB BLK 114 694 P

DS Black Zinger 141B
LRS Big Country 37E
LRS Miss 600U 304C
Burns Bull X339U
E171
DSR Mary Ann C182

Here's a cow you can build a carcass program around. She goes back to the Molley cow. There's a lot of growth in this cow family. AI'd on 6/6/09 to SVF/NJC Mo Better M217. Exposed to HSR Dakota Kid T804 from 6/11/09 to 7/17/09 and DSR Real Stone U248 from 7/1/09 to 8/8/09. Ultrasound safe to AI with a bull calf.

CE	BW	WW	YW	MCE	Milk	MWW	CW	YG	Marb	REA	API	TI
2	7	53	92	0	2	29	26.3	0.05	0.24	0.47	116	69



DSR Perfect Powder L19



Reg. # Tattoo BD % Simm Color BW WW H/P/S
2135243 L19 3/4/01 PB BLK 109 699 P

DS Black Zinger 141B
LRS Big Country 37E
LRS Miss 600U 304C
DSR Black Hawk X29
DSR Powder B-110
DSR Jasmon X7

This cow has had seven calves that had an average weaning wt. ratio of 107 and had two scan for an average ratio of 105 for REA. AI'd on 6/6/09 to Mr NLC Superior S6018. Exposed to HSR Dakota Kid T804 from 6/11/09 to 7/17/09 and DSR Real Stone U248 from 7/1/09 to 8/8/09. Ultrasound safe to AI with a heifer calf.

CE	BW	WW	YW	MCE	Milk	MWW	CW	YG	Marb	REA	API	TI
1	7	56	92	-1	1	29	26.6	-0.07	0.04	0.29	99	71



DSR Shear Powder W346



This is a Hooks Shear Force 38K daughter out of Lot 137.

Reg. # Tattoo BD % Simm Color BW WW H/P/S
9644080 W346 3/31/09 PB BLK 87 P

LRS Black Country L109
DSR Black Zinger 141B
LRS Big Country 37E
LRS Miss 600U 304C
DSR Black Feather C44
DSR Black Cypris F80
DSR Cybil C3

Check out the ribeye EPD on her! Along with a close to average marbling EPD. She's double black and polled. AI'd on 6/6/09 to Mr NLC Superior S6018. Exposed to HSR Dakota Kid T804 from 6/11/09 to 7/17/09 and DSR Real Stone U248 from 7/1/09 to 8/8/09. Ultrasound safe to AI with a heifer calf.

CE	BW	WW	YW	MCE	Milk	MWW	CW	YG	Marb	REA	API	TI
10	0	38	66	2	8	27	2.2	-0.14	0.28	0.63	130	



DSR Sonja L8



Reg. # Tattoo BD % Simm Color BW WW H/P/S
2135280 L8 2/27/01 PB RED 91 703 P

PFSR Coal Black 65F
LRS Red Reality 33J
LRS Ms Prefd Stock 715G
WHF Red Ransom 840E
DSR Temtation J111
DSR Zita E8

Jaden had "Sunny" to the junior regional in Minot. She has produced the \$6,300 bull that Milton Wipert bought. Milt told us that this group of calves out weighed his others significantly. We will also offer a daughter, U165. AI'd on 6/2/09 to WS Beef Maker R13. Exposed to WS Beef Maker from 6/10/09 to 8/8/09. Ultrasound safe to AI with a heifer calf.

CE	BW	WW	YW	MCE	Milk	MWW	CW	YG	Marb	REA	API	TI
7	1	41	78	-1	-3	17	9.7	0	0.25	0.51	116	70



DSR Lady Fortune L133

Reg. # Tattoo BD % Simm Color BW WW H/P/S
2135224 L133 3/23/01 PB RED 110 656 P

LRS Preferred Stock 370C
SRS Fortune 500
SRS Dawson Queen D-27
PTL Jack Pot C588
DSR Disa F10
DSR Tina A-28

L133 is an easy keeping non-diluted cow. AI'd on 6/1/09 to WS Beef Maker R13. Exposed to DSR Signature T458 from 6/10/09 to 8/6/09. Ultrasound due date 3/31/2010 with a heifer calf.

CE	BW	WW	YW	MCE	Milk	MWW	CW	YG	Marb	REA	API	TI
4	6	44	74	0	1	23	14.5	0.17	0.26	-0.25	106	64



DECKERT
Generations of Genetics

Lot 141 -
DSR Lucky
Detail L12



DSR Lucky Detail L12

Reg. # Tattoo BD % Simm Color BW WW H/P/S
2135217 L12 2/28/01 PB BLK 78 643 P

- LCHMAN Lucky Buck 7049C
- Gw Lucky Break 047G
- Gw Miss 600U 1351C
- Nichols Blk Destiny D12
- DSR Black Detail J19
- DSR Black Splash G10

She is double black and polled going back to the J19 cow that has produced many top daughters. AI'd on 6/6/09 to SVF/NJC Mo Better M217. Exposed to HSR Dakota Kid T804 from 6/11/09 to 7/17/09 and DSR Real Stone U248 from 7/1/09 to 8/8/09. Ultrasound safe to AI with a bull calf.

CE	BW	WW	YW	MCE	Milk	MWW	CW	YG	Marb	REA	API	TI
9	-2	21	38	3	7	18	-17.8	-0.11	0	-0.06	104	56



DECKERT
Generations of Genetics

Lot 142 -
DSR Country
Dance L135



DSR Country Dance L135

Reg. # Tattoo BD % Simm Color BW WW H/P/S
2135226 L135 3/23/01 PB RED 96 637 P

- DS Black Zinger 141B
- LRS Big Country 37E
- LRS Miss 600U 304C
- PTL Jack Pot C588
- DSR Black Dance G96
- DSR Ivy Y-93

The L135 cow is non-diluted and double polled. She's weaned 6 calves with an average ratio of 101. AI'd on 6/2/09 to GCF Mr Amigo. Exposed to DSR Signature T458 from 6/10/09 to 8/6/09. Ultrasound safe to AI with a heifer calf.

CE	BW	WW	YW	MCE	Milk	MWW	CW	YG	Marb	REA	API	TI
-1	2	37	69	-1	3	21	6.6	-0.05	0.01	0.26	90	59



DECKERT
Generations of Genetics

Lot 143 -
DSR Real
Famye L21



DSR Real Famye L21

Reg. # Tattoo BD % Simm Color BW WW H/P/S
2135249 L21 3/5/01 PB RED 0 702 HOMOP

- PPSR Coal Black 65F
- LRS Red Reality 33J
- LRS Ms Prefd Stock 715G
- Polled Hercules A7
- DSR Red Fayme E50 DSR Red Dutchess C53

Here's a full sister to the L28 cow. She's homozygous polled. AI'd on 6/2/09 to WS Beef Maker R1. Exposed to WS Beef Maker from 6/10/09 to 8/8/09. Ultrasound safe to AI with a heifer calf.

CE	BW	WW	YW	MCE	Milk	MWW	CW	YG	Marb	REA	API	TI
5	0	28	58	-4	-3	11	-2.9	-0.06	0.07	0.33	94	58



DECKERT
Generations of Genetics

Lot 144 -
DSR Cherry
Pie L211



DSR Cherry Pie L211

Reg. # Tattoo BD % Simm Color BW WW H/P/S
2135250 L211 4/10/01 PB RED 83 640 P

- Burns Bull X339U
- DSR Red Tracer D184
- DSR Mandy B-101
- MV Red Light 406
- DSR Cherry Blossom J155
- KSR Cherry Red 427A

I have had high expectations for this cow. She got the ability to get it done. She is non-diluted and double polled. AI'd on 6/2/09 to WS Beef Maker R13. Exposed to WS Beef Maker from 6/10/09 to 8/8/09.

CE	BW	WW	YW	MCE	Milk	MWW	CW	YG	Marb	REA	API	TI
1	0	23	42	6	11	23	-12.1	0.01	-0.06	-0.26	90	51

DSR Kitty L48



Reg. # Tattoo BD % Simm Color BW WW H/P/S
2135263 L48 3/12/01 PB RED 95 698 P

NLC 64Y Tomcat L48 is a maternal sister to Loonan Stock Farms, DSR Top Cut bull. She has weaned 6 calves for an average ratio of 104 Al'd on 6/1/09 to GCF Mr Amigo. Exposed to DSR Signature T458 6/10/09 to 8/6/09. Ultrasound due date 3/31/2010 with a heifer calf.

BOZ Redcat D162
WBR Miss Jounior 2Z
ER Mackfrid 550B
DSR Red Paradise G3
DSR Red Fern F76

CE	BW	WW	YW	MCE	Milk	MWW	CW	YG	Marb	REA	API	TI
6	2	45	76	1	5	27	10.6	0.06	0.23	0.23	119	69



DSR Molley L53



Reg. # Tattoo BD % Simm Color BW WW H/P/S
2135268 L53 3/13/01 PB BLK 97 608 P

MV Red Light 406 Her grandmother is the Molley cow. She is out of a red bull. Al'd on 6/5/09 to RC Club King 040R. Exposed to HSR Dakota Kid T804 from 6/11/09 to 7/17/09 and DSR Real Stone U248 from 7/1/09 to 8/8/09.

DSR Red Enticer H11
DSR Purdee F142
DSR Black Powder Z-13
DSR Olympia C72
Miss Molley 34Y

CE	BW	WW	YW	MCE	Milk	MWW	CW	YG	Marb	REA	API	TI
6	2	26	53	1	8	20	-2.4	0.06	0.03	-0.31	99	53



DSR Perfect Luck L6



Reg. # Tattoo BD % Simm Color BW WW H/P/S
2135270 L6 2/27/01 PB BLK 78 602 P

LCHMN Lucky Buck 7049C She is a member of the Molley cow family. With the 6 calves she has weaned, they have had an average ratio of 106 Al'd on 6/6/09 to SVF/NJC Mo Better M217. Exposed to HSR Dakota Kid T804 from 6/11/09 to 7/17/09 and DSR Real Stone U248 from 7/1/09 to 8/8/09.

GW Lucky Break 047G
GW Miss 600U 1351C
SRS Fortune 500
DSR Perfect Powder J84
DSR Olympia C72

CE	BW	WW	YW	MCE	Milk	MWW	CW	YG	Marb	REA	API	TI
9	0	30	67	2	7	22	3.3	0	0.24	0.12	116	65



DSR Lush L5



Reg. # Tattoo BD % Simm Color BW WW H/P/S
2135264 L5 2/26/01 PB BLK 75 622 P

LCHMAN Lucky Buck 7049C This is a double black and polled cow. She goes back to the 325R cow and has an aPI of 117 which is in the top 15%. S752 is her daughter. Al'd on 6/6/09 to RC Club King 040R. Exposed to HSR Dakota Kid T804 from 6/11/09 to 7/17/09 and DSR Real Stone U248 from 7/1/09 to 8/8/09. Ultrasound safe to AI with a bull calf.

GW Lucky Break 047G
GW Miss 600U 1351C
ER Black Cisco 532C
DSR Temptaion J39
DSR Miss Premere G2

CE	BW	WW	YW	MCE	Milk	MWW	CW	YG	Marb	REA	API	TI
9	0	33	63	3	3	19	0.3	0.16	0.18	-0.36	117	64



DSR Sammie L71

Reg. # Tattoo BD % Simm Color BW WW H/P/S
2135278 L71 3/15/01 PB BLK 82 630 P

LRS Preferred Stock 370C She is double back and polled. She has weaned 6 calves with an average weaning ratio of 101. Al'd on 6/26/09 to Mr NLC Superior S6018. Exposed to HSR Dakota Kid T804 from 7/3/09 to 7/17/09 and DSR Real Stone U248 from 7/1/09 to 8/8/09.

SRS Fortune 500
SRS Dawson Queen D-27
DSR Black Powder Z-13
DSR Mello F52
Meyer Ranch 714

CE	BW	WW	YW	MCE	Milk	MWW	CW	YG	Marb	REA	API	TI
6	-2	20	31	-1	11	21	-22.6	-0.02	0.26	0.01	110	61



Lot 150 -
DSR Lucky
Vib L63



DSR Lucky Vib L63

Reg. # **Tattoo** **BD** % **Simm** **Color** **BW** **WW** **H/P/S**
2135274 L63 3/14/01 PB BLK 90 585 P

LCHMAN Lucky Buck 7049C
GW Lucky Break 047G
GW Miss 600U 1351C
DSR Quattro C25
DSR Premonition E56
DSR Powder B-110

This is a double black and polled cow that goes back to the DSR Black Powder cow family. AI'd on 6/5/09 to RC Club King 040R. Exposed to HSR Dakota Kid T804 from 6/11/09 to 7/17/09 and DSR Real Stone U248 from 7/1/09 to 8/8/09. Ultrasound due date 4/4/2010 with a heifer calf.

CE	BW	WW	YW	MCE	Milk	MWW	CW	YG	Marb	REA	API	TI
7	-2	22	44	2	2	13	-13.5	-0.12	0.11	-0.01	106	58



Lot 151 -
DSR Super
Cool K56



DSR Super Cool K56

Reg. # **Tattoo** **BD** % **Simm** **Color** **BW** **WW** **H/P/S**
2071531 K56 3/11/00 PB RED 95 565 P

Chief Red Bear
DSR Super Bear D21
DSR Merle X-172
DSR Red Tracer D184
DSR Tracy F113
DSR Rudi D182

Her first daughter is a donor cow for Kjelgaard Simmentals. She goes back to some of DSR's greatest cow families on both sides of her pedigree. AI'd on 6/1/09 to WS Beef Maker R13. Exposed to WS Beef Maker 6/10/09 to 8/8/09. Ultrasound safe to AI.

CE	BW	WW	YW	MCE	Milk	MWW	CW	YG	Marb	REA	API	TI
1	0	21	45	9	8	19	-9.6	0.02	0.04	0.03	91	52



Lot 152 -
DSR Snappy
Fortune K18



DSR She B Hot W314

Reg. # **Tattoo** **BD** % **Simm** **Color** **BW** **WW** **H/P/S**
9644050 W314 3/25/09 PB RED 83 P

This is a DSR Yukon Red S734 daughter out of Lot 151.

CE	BW	WW	YW	MCE	Milk	MWW	CW	YG	Marb	REA	API	TI
4	1	31	62	8	6	22	0.8	0.04	0.02	0.13	95	58



DSR Snappy Fortune K18

Reg. # **Tattoo** **BD** % **Simm** **Color** **BW** **WW** **H/P/S**
2071495 K18 2/29/00 PB BLK 87 623 P

LRS Preferred Stock 370C
SRS Fortune 500
SRS Dawson Queen D-27
WHF Red Ransom 840E
DSR Midnight Ransom H106
DSR Polly T33

This is a double black and polled cow. She has weaned 7 calves at an average weaning ratio of 106. AI'd on 6/6/09 to SVF/NJC Mo Better M217. Exposed to HSR Dakota Kid T804 from 6/11/09 to 7/17/09 and DSR Real Stone U248 from 7/1/09 to 8/8/09.

CE	BW	WW	YW	MCE	Milk	MWW	CW	YG	Marb	REA	API	TI
7	1	32	57	2	12	28	-2	-0.03	0.4	0.11	120	69



DSR Moon Kissed 863K

Reg. # **Tattoo** **BD** % **Simm** **Color** **BW** **WW** **H/P/S**
2071463 863K 2/9/00 PB BLK 88 624 P

Hercules 538P
DS Black Zinger 141B
Leachman Blk Baldy Z229
Gw-Cpl Red Alert
Ms Diamond G 63H
Rag Ms Americana F633

Here's a powerful cow that has produced 7 calves that have an average weaning ratio of 102. She does have a red gene. AI'd on 6/5/09 to Mr NLC Superior S6018. Exposed to HSR Dakota Kid T804 from 6/11/09 to 7/17/09 and DSR Real Stone U248 from 7/1/09 to 8/8/09. Ultrasound due date 4/3/2010 with a heifer calf.

CE	BW	WW	YW	MCE	Milk	MWW	CW	YG	Marb	REA	API	TI
7	-1	28	53	2	5	19	-6.7	0.07	0.04	-0.08	103	58



DSR Razzle Dazzel W364

Reg. # **Tattoo** **BD** % **Simm** **Color** **BW** **WW** **H/P/S**
9644097 W364 4/2/09 1/2 SIM 1/2 ANGUS BLK 93 P

This is a Sinclair Extra 4X13 daughter out of Lot 153.

CE	BW	WW	YW	MCE	Milk	MWW	CW	YG	Marb	REA	API	TI
0	-2	21	44	0	4	15	-13.6	0	0.02	-0.04	94	52



DSR Black Song K35

Reg. # **Tattoo** **BD** % **Simm** **Color** **BW** **WW** **H/P/S**
2071522 K35 3/6/00 PB BLK 90 630 P

LRS Preferred Stock 370C
SRS Fortune 500
SRS Dawson Queen D-27
DSR Black Powder Z-13
DSR Black Melody G70
DSR Emily A-132

The K35 cow is double black and polled. She has been a solid cow in our herd. We have scanned three of her calves and they have averaged 113 for IMF. AI'd on 6/26/09 to PSR Integrity S504. Exposed to HSR Dakota Kid T804 from 6/11/09 to 7/17/09 and DSR Real Stone U248 from 7/1/09 to 8/8/09. Ultrasound safe to AI.

CE	BW	WW	YW	MCE	Milk	MWW	CW	YG	Marb	REA	API	TI
6	1	33	58	-1	4	20	-1.2	0.08	0.25	-0.08	110	63



DSR Cheerleader W288

Reg. # **Tattoo** **BD** % **Simm** **Color** **BW** **WW** **H/P/S**
9644023 W288 3/22/09 3/4 SIM 1/4 ANGUS BLK 82 0 P

This is a PVF-6S17 HY Touch-down daughter out of Lot 154.

CE	BW	WW	YW	MCE	Milk	MWW	CW	YG	Marb	REA	API	TI
0	1	31	63	0	6	21	1.3	0.14	0.19	-0.01	101	62

DSR Red Dish K51



Reg. # Tattoo BD % Simm Color BW WW H/P/S
2071529 K51 3/10/00 PB RED 96 714 P

- NLC 64Y Tomcat
- BOZ Redcat D162
- WBR Miss Jounior 2Z
- Chief Red Bear
- DSR Vesta E106
- DSR Fifi Y-88

K51 has been a very productive cow, producing 7 calves with a weaning ratio of 103. Which includes a bull that sold for \$5250 at our 2006 sale. She also has a daughter M19 that will sell. AI'd on 6/2/09 to GCF Mr Amigo. Exposed to DSR Signature T458 from 6/10/09 to 8/6/09. Ultrasound safe to AI with a heifer calf.

CE	BW	WW	YW	MCE	Milk	MWW	CW	YG	Marb	REA	API	TI
5	1	40	67	-1	12	32	3.5	0.07	-0.05	0.02	94	61



DSR Embrace Fortune K57



Reg. # Tattoo BD % Simm Color BW WW H/P/S
2071532 K57 3/11/00 PB BLK 99 649 P

- LRS Preferred Stock 370C
- SRS Fortune 500
- SRS Dawson Queen D-27
- DSR Blockbuster E148
- DSR Black Embrace G24
- DSR Black Mayda E28

Embrace Fortune is a good name for this cow. She has weaned 6 calves and they have averaged 106. She is the dam of the N154 cow and T475. She does have a red gene. AI'd on 6/6/09 to Sinclair Extra 4X13. Exposed to HSR Dakota Kid T804 from 6/11/09 to 7/17/09 and DSR Real Stone U248 from 7/1/09 to 8/8/09. Ultrasound safe to AI with a bull calf.

CE	BW	WW	YW	MCE	Milk	MWW	CW	YG	Marb	REA	API	TI
5	4	48	80	-2	7	31	15.7	0.11	0.26	-0.05	115	69



DSR Black Royalty W305



*This is an ESMJ Conservative
MJ9365 daughter out of Lot 156.*

Reg. # Tattoo BD % Simm Color BW WW H/P/S
9644041 W305 3/23/09 PB BLK 81 P

CE	BW	WW	YW	MCE	Milk	MWW	CW	YG	Marb	REA	API	TI
9	1	44	73	1	4	26	6.6	-0.03	0.12	0.25	113	69



DSR My Beef W251



Reg. # Tattoo BD % Simm Color BW WW H/P/S
2488694 W251 3/14/09 PB RED 77 0 P

- Hooks Shear Force 38K
- WS Beef Maker R13
- DCR Ms Ribeye N72
- Hooks Red Quorum 55H
- DSR Oh! My S899
- DSR My Oh My G75

This calf goes back to a strong cow family. She's non-diluted and fancy.

CE	BW	WW	YW	MCE	Milk	MWW	CW	YG	Marb	REA	API	TI
9	1	44	72	-2	5	27	7.1	-0.01	0.22	0.2	115	71

DSR Starlite W236



Reg. # Tattoo BD % Simm Color BW WW H/P/S
2489035 W236 3/8/09 3/4 SIM 1/4 ANGUS RED 82 0 P

- RC Stinger 072K
- TNT Gunner N208
- TNT Miss Honey L9
- LCC Major League A502M
- DSR Starla T311
- DSR Starbrite R842

This is a 3/4 blood calf out of a real productive Sim-Angus 1st calf heifer.

CE	BW	WW	YW	MCE	Milk	MWW	CW	YG	Marb	REA	API	TI
0	1	36	61	0	2	20	0.6	0.12	0.28	-0.13	103	65

DSR W237



Reg. # Tattoo BD % Simm Color BW WW H/P/S
2489036 W237 3/8/09 PB RED 84 0 P

- Hooks Shear Force 38K
- WS Beef Maker R13
- DCR Ms Ribeye N72
- SS Milestone
- DSR Milestone T484
- DSR Red Dazzel N161

This is a non-diluted and double polled female. She's a typical Beef Maker and goes back to the productive Lot 106 cow.

CE	BW	WW	YW	MCE	Milk	MWW	CW	YG	Marb	REA	API	TI
10	2	40	68	-1	2	22	5.3	-0.06	0.28	0.32	119	69

DSR Dream W242



Reg. # Tattoo BD % Simm Color BW WW H/P/S
2489037 W242 3/9/09 3/4 SIM 1/4 RA RED 62 0 P

- Wheatland Bull 131L
- Wheatland Red Teddy 457P
- Wheatland Lady 902J
- LCC Cheyenne B221L
- DSR Little Bit Chey T385
- DSR Super Babe H75

This 3/4 blood calf goes back to a very good milking cow family.

CE	BW	WW	YW	MCE	Milk	MWW	CW	YG	Marb	REA	API	TI
0	0	33	59	0	4	21	-2.6	0.15	0.14	-0.28	102	63

DSR Miss Rio Grande W243



Reg. # Tattoo BD % Simm Color BW WW H/P/S
2489039 W243 3/10/09 3/4 SIM 1/4 RA RED 80 0 P

RC Stinger 072K
TNT Gunner N208
TNT Miss Honey L9
LCC Cheyenne B221L
DSR Little Bit Chey S728
Riv Farrah 650F

Here's a nice 3/4 blood heifer. This fancy calf is an eye catcher.

CE	BW	WW	YW	MCE	Milk	MWW	CW	YG	Marb	REA	API	TI
*	1	35	63	*	5	22	1.1	0.14	0.23	-0.08	102	64

DSR Miss Focus W263



Reg. # Tattoo BD % Simm Color BW WW H/P/S
2489038 W263 3/17/09 1/2 SIM 1/2 ANGUS BBF 80 0 P

SAF Focus Of ER
Mytty In Focus
Mytty Countess 906
ER Black Cisco 532C
DSR Belara J107
DSR Super Powder G57

We have two maternal sisters to this heifer in the sale. You will see the consistency in this family.

CE	BW	WW	YW	MCE	Milk	MWW	CW	YG	Marb	REA	API	TI
*	-3	28	57	*	11	25	-7.7	0.21	0.5	-0.15	125	71

DSR W309



Reg. # Tattoo BD % Simm Color BW WW H/P/S
2489040 W309 3/25/09 PB RED 83 0 P

MLC Dakota Sunrise P32
DSR Yukon Red S734
DSR Real Dazzel N185
ER Big Sky 545B
DSR Red Outlook G42
DSR Zita E8

The lots 24, 96, and 120 are all maternal sisters to her.

CE	BW	WW	YW	MCE	Milk	MWW	CW	YG	Marb	REA	API	TI
8	1	35	64	5	6	24	1.2	0.04	0.1	0.16	105	63

DSR Sweet Fortune W341



Reg. # Tattoo BD % Simm Color BW WW H/P/S
2489041 W341 3/31/09 PB BLK 98 0 P

HTP Svf In Dew Time
SAS T101 Sweet Meat
SAS Sweets Star R101
SRS Fortune 500
DSR Snappy Fortune K18
DSR Midnight Ransom H106

Here's a heifer that goes back to a productive K18 cow who is also in the H106 cow family. She'll make a good cow.

CE	BW	WW	YW	MCE	Milk	MWW	CW	YG	Marb	REA	API	TI
10	3	40	64	5	10	30	4.2	0.08	0.37	0.01	121	70

DSR My 4X Girl W343



Reg. # Tattoo BD % Simm Color BW WW H/P/S
9644077 W343 3/31/09 1/2 SIM 1/2 ANGUS BLK 87 0 P

N Bar Emulation Ext
Sinclair Extra 4X13
N Bar Lady Ida S C C 2P37
LRS Big Country 37E
DSR Big Maxine L166
DSR Maxine B-66

This is a fancy 1/2 blood calf.

CE	BW	WW	YW	MCE	Milk	MWW	CW	YG	Marb	REA	API	TI
*	2	29	57	*	2	16	-0.7	0.03	-0.04	-0.01	75	47

DSR Extra Pleasure W349



Reg. # Tattoo BD % Simm Color BW WW H/P/S
9644083 W349 3/31/09 1/2 SIM 1/2 ANGUS BLK 85 0 P

N Bar Emulation Ext
Sinclair Extra 4X13
N Bar Lady Ida S C C 2P37
DSR Stone Edge G14
DSR Blk Pleasure J138
Miss Striegel Y951

This is the only female out of her dam. The J138 cow is very powerful and has passed that to Pleasure.

CE	BW	WW	YW	MCE	Milk	MWW	CW	YG	Marb	REA	API	TI
*	2	21	44	*	6	17	-8.1	-0.05	0.01	0.05	72	43

Generations of Genetics • Deckert Simmental Ranch



DSR Captured Beef W351



Reg. # Tattoo BD % Simm Color BW WW H/P/S
2489042 W351 4/1/09 PB RED 98 0 P

Hooks Shear Force 38K
WS Beef Maker R13
DCR Ms Ribeye N72
WHF Red Ransom 840E
DSR Captured Red J172
E174

Captured Red Is one of the top cows in our herd. She always has our top calves and this one is no exception. Don't miss out on these genetics.

CE	BW	WW	YW	MCE	Milk	MWW	CW	YG	Marb	REA	API	TI
9	5	52	82	-1	9	35	17.5	-0.01	0.18	0.34	116	71

DSR Dashing Beauty W444



Reg. # Tattoo BD % Simm Color BW WW H/P/S
2489044 W444 4/18/09 PB RED 82 0 P

- Hooks Shear Force 38K
- WS Beef Maker R13
- DCR Ms Ribeye N72
- WHF Red Ransom 840E
- DSR Black Elsie H178
- WS Miss Buck Ex E110

I don't know how to make one any better. She is non-diluted red and check out her numbers. She's got calving ease, good growth, and top carcass. You don't have to fix anything, she'll just make the great ones.

CE	BW	WW	YW	MCE	Milk	MWW	CW	YG	Marb	REA	API	TI
9	0	40	66	-1	12	32	0.6	-0.05	0.46	0.41	135	77



DSR Sweets W358



Reg. # Tattoo BD % Simm Color BW WW H/P/S
2489043 W358 4/1/09 PB BLK 89 0 P

- HTP Svf In Dew Time
- SAS T101 Sweet Meat
- SAS Sweets Star R101
- BH Right Time 520E
- DSR Miss Right Black J45
- Meyer Ranch 854

Here's a chance to get one of the first Sweet Meat daughters to sell.

CE	BW	WW	YW	MCE	Milk	MWW	CW	YG	Marb	REA	API	TI
8	2	36	57	4	6	24	-1	0.1	0.28	-0.12	115	65



DSR Tempting Design U2



Reg. # Tattoo BD % Simm Color BW WW H/P/S
2481545 U2 2/25/08 1/2 SIM 1/2 ANGUS BLK 83 721 P

- B/R New Design 036
- Bon View New Design 878
- Bon View Gammer 85
- ES Dakota NK68
- DSR Shes Tempting S879
- DSR Temptaion J39

This Sim-Angus heifer goes back to the 325R cow family. Al'd on 5/21/09 to SS Ebony's Grandmaster. Projected due date is 2/26/2010 with a bull calf. Exposed to WS Beef Maker from 5/30 to 7/8/09.

CE	BW	WW	YW	MCE	Milk	MWW	CW	YG	Marb	REA	API	TI
*	0	45	84	*	9	31	12.8	0.29	0.45	-0.26	114	74



DSR Passion U1



Reg. # Tattoo BD % Simm Color BW WW H/P/S
2481514 U1 2/25/08 PB RED 82 699 P

- RC Stinger 072K
- TNT Gunner N208
- TNT Miss Honey L9
- Hooks Red Quorum 55H
- DSR Oh! My S899
- DSR My Oh My G75

Here's a non-diluted heifer. Her grandmother weaned 6 calves with an average weaning ratio of 112. Al'd on 5/21/09 to WS Beef Maker. Projected due date is 2/26/2010 with a bull calf. Exposed to WS Beef Maker from 5/30 to 7/8/09.

CE	BW	WW	YW	MCE	Milk	MWW	CW	YG	Marb	REA	API	TI
6	3	46	77	4	4	27	12.4	0.14	0.03	-0.04	92	64

DSR Interrupt U21



Reg. # Tattoo BD % Simm Color BW WW H/P/S
2481547 U21 3/4/08 PB BLK 87 717 P

- SRS J914 Preferred Beef
- Triple C Invasion R47K
- Hooks Karrie 47K
- Black Shamrock E157
- DSR Annierock S871
- DSR Annie L66

She has a family of powerful cows behind her. Al'd on 5/21/09 to SS Ebony's Grandmaster. Projected due date is 2/26/2010 with a bull calf. Exposed to WS Beef Maker from 5/30 to 7/8/09.

CE	BW	WW	YW	MCE	Milk	MWW	CW	YG	Marb	REA	API	TI
8	3	42	72	4	6	27	9.5	-0.07	0.16	0.56	114	66



DSR Coral U3

Reg. # **Tattoo** **BD** % **Simm** **Color** **BW** **WW** **H/P/S**
2481566 U3 2/26/08 PB RED 82 663 P

Hooks Shear Force 38K
WS Beef Maker R13
DCR Ms Ribeye N72
CNS Dream On L186
DSR Dream Rain S717
DSR Black Rain P408

Here's a female that's stout and has an excellent set of numbers to back her up. AI'd on 5/21/09 to TNT Gunner N208. Projected due date is 3/15/010. Exposed to DSR Signature T458 from 5/30 to 7/9/09.

CE	BW	WW	YW	MCE	Milk	MWW	CW	YG	Marb	REA	API	TI
11	1	46	69	1	2	24	3.9	-0.02	0.34	0.36	120	75



DSR Spectacular U13

Reg. # **Tattoo** **BD** % **Simm** **Color** **BW** **WW** **H/P/S**
2481524 U13 3/2/08 PB RED 81 639 P

Branded Beef LCC L397L
MLC Dakota Sunrise P32
MLC Red Light M33
LCHMAN Bodybuilder 7303F
DSR Bedazzled R742
J135

There's a lot of sires with good maternal values behind this heifer. AI'd on 5/21/09 to WS Beef Maker. Projected due date is 3/13/2010. Exposed to WS Beef Maker from 5/30 to 7/8/09.

CE	BW	WW	YW	MCE	Milk	MWW	CW	YG	Marb	REA	API	TI
4	2	32	64	7	9	25	3.5	-0.01	0.13	0.08	91	61



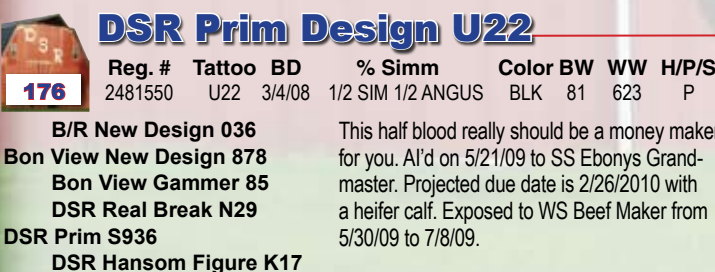
DSR Gun Chey U16

Reg. # **Tattoo** **BD** % **Simm** **Color** **BW** **WW** **H/P/S**
2481591 U16 3/2/08 3/4 SIM 1/4 RA RED 77 680 P

RC Stinger 072K
TNT Gunner N208
TNT Miss Honey L9
LCC Cheyenne B221L
DSR Little Bit Chey S728
Riv Farrah 650F

This is one of my favorite heifers. I expect her to make a very powerful cow. AI'd on 5/21/10 to WS Beef Maker. Projected due date is 2/26/2010 with a heifer calf. Exposed to WS Beef Maker from 5/30 to 7/8/09.

CE	BW	WW	YW	MCE	Milk	MWW	CW	YG	Marb	REA	API	TI
*	1	34	62	*	5	22	0.2	0.15	0.22	-0.08	102	64



DSR Prim Design U22

Reg. # **Tattoo** **BD** % **Simm** **Color** **BW** **WW** **H/P/S**
2481550 U22 3/4/08 1/2 SIM 1/2 ANGUS BLK 81 623 P

B/R New Design 036
Bon View New Design 878
Bon View Gammer 85
DSR Real Break N29
DSR Prim S936
DSR Hansom Figure K17

This half blood really should be a money maker for you. AI'd on 5/21/09 to SS Ebonys Grandmaster. Projected due date is 2/26/2010 with a heifer calf. Exposed to WS Beef Maker from 5/30/09 to 7/8/09.

CE	BW	WW	YW	MCE	Milk	MWW	CW	YG	Marb	REA	API	TI
0	33	58	5	22	-3.1	0.18	0.52	-0.12	113	68		



DSR In Check U23

Reg. # **Tattoo** **BD** % **Simm** **Color** **BW** **WW** **H/P/S**
2481554 U23 3/5/08 PB BLK 77 622 P

CNS Dream On L186
CCR Mr Dream On G779R
CCR Ms Bell
GFI Magnum K52
DSR Perfect Balance R745
DSR Harmony J13

This heifer has a very balanced set of EPD's with an aPI of 111. AI'd on 5/20/09 to SS Ebonys Grandmaster. Projected due date is 2/25/2010 with a bull calf. Exposed to WS Beef Maker from 5/30/09 to 7/8/09.

CE	BW	WW	YW	MCE	Milk	MWW	CW	YG	Marb	REA	API	TI
7	0	33	57	3	9	25	-3.1	0.02	0.26	0.05	111	66

DSR Extra Luck U29



Reg. # Tattoo BD % Simm Color BW WW H/P/S
2481565 U29 3/7/08 1/2 SIM 1/2 ANGUS BLK 92 641 P

Nichols Extra H6
Nichols Extra K205
Nichols Blk HeireSS F346
SRS J914 Preferred Beef
DSR Georgette R791
DSR Full Of Luck M117

Her growth numbers are in the top 10% of the breed. AI'd on 5/20/09 to SS Ebony's Grandmaster. Projected due date is 4/2/2010. Exposed to WS Beef Maker from 5/30/09 to 7/8/09.

CE	BW	WW	YW	MCE	Milk	MWW	CW	YG	Marb	REA	API	TI
*	2	40	84	*	8	28	16	0.21	0.4	0.03	98	66



DSR Miss Sparkel U44



Reg. # Tattoo BD % Simm Color BW WW H/P/S
2481568 U44 3/11/08 PB RED 90 638 P

Hooks Shear Force 38K
WS Beef Maker R13
DCR Ms Ribeye N72
KBHR-K002
DSR Twinkle N233
DSR Exuberant Red H36

Here's a nice Beef Maker heifer. She will be a great addition to your herd. AI'd on 5/21/09 to TNT Gunner N208. Projected due date is 2/26/2010 with a bull calf. Exposed to DSR Signature T458 from 5/30/09 to 7/9/09.

CE	BW	WW	YW	MCE	Milk	MWW	CW	YG	Marb	REA	API	TI
9	2	42	72	-2	3	24	8.8	0.02	0.14	0.14	112	66



DSR Miss Dream Time U28



Reg. # Tattoo BD % Simm Color BW WW H/P/S
2481564 U28 3/7/08 PB BLK 70 599 P

CNS Dream On L186
CCR Mr Dream On G779R
CCR Ms Bell
DSR Real Break N29
DSR Tea Time R843
DSR Teaberry J94

Here's double black and polled heifer that has an aPI in the top 15% of the breed. AI'd on 5/21/09 to SS Ebony's Grandmaster. Projected due date is 2/26/2010 with a heifer calf. Exposed to WS Beef Maker from 5/30/09 to 7/8/09.

CE	BW	WW	YW	MCE	Milk	MWW	CW	YG	Marb	REA	API	TI
9	-1	30	57	3	4	19	-4.9	0.04	0.22	-0.02	116	65

DSR Dakota Star U53



Reg. # Tattoo BD % Simm Color BW WW H/P/S
2481570 U53 3/12/08 3/4 SIM 1/4 ANGUS BLK 108 721 P

SRS J914 Preferred Beef
ES Dakota NK68
ESK68
Bon View New Design 878
DSR Stars Design R704
DSR Correct Star N76

Look at the growth in this heifer. She should bring in a big strapping calf next fall. AI'd on 5/21/09 to SS Ebony's Grandmaster. Projected due date is 2/26/2010 with a heifer calf. Exposed to WS Beef Maker from 5/30 to 7/8/09.

CE	BW	WW	YW	MCE	Milk	MWW	CW	YG	Marb	REA	API	TI
*	6	58	100	*	3	32	30.4	0.16	0.26	0.13	91	70

DSR Miss Integrity U55



Reg. # Tattoo BD % Simm Color BW WW H/P/S
2481571 U55 3/12/08 PB BLK 79 646 P

Black Shamrock E157
PSR Integrity S504
Miss Pelton P405
BH Right Time 520E
DSR Right Turn K93
WS Miss Buck Ex E110

This heifer goes back to a higher marbling cow family. Her API is in the top 4% of the breed. AI'd on 5/21/09 to SS Ebony's Grandmaster. Projected due date is 2/26/2010 with a heifer calf. Exposed to WS Beef Maker for 5/30/09 to 7/8/09.

CE	BW	WW	YW	MCE	Milk	MWW	CW	YG	Marb	REA	API	TI
9	-1	30	53	3	10	26	-7	0.11	0.41	0.11	127	69

DSR Grand Beef U56



Reg. # Tattoo BD % Simm Color BW WW H/P/S
2481572 U56 3/12/08 PB RED 78 640 P

Hooks Shear Force 38K
WS Beef Maker R13
DCR Ms Ribeye N72
Branded Beef LCC L397L
DSR Grand Edition R708
DSR First Edition N1

Her API is in the top 3% and her TI is in the top 1%. She will make a nice cow. AI'd on 5/21/09 to TNT Gunner N208. Projected due date is 4/11/2010. Exposed to DSR Signature T458 from 5/30/09 to 7/9/09.

CE	BW	WW	YW	MCE	Milk	MWW	CW	YG	Marb	REA	API	TI
10	-1	43	70	1	5	27	2.3	-0.02	0.37	0.26	131	76



Lot 184 -
DSR Extra
Passion U62



DSR Extra Passion U62

Reg. # Tattoo BD % Simm Color BW WW H/P/S
2481576 U62 3/14/08 1/2 SIM 1/2 ANGUS BLK 93 700 P

Nichols Extra H6
Nichols Extra K205
Nichols Blk HeireSS F346
DSR Stone Edge G14
DSR Black Passion N150
DSR Chanel K94

This heifer goes back to the N150 who is another favorite cow we have. This mating should be powerful. AI'd on 5/21/09 to SS Ebonys Grandmaster. Exposed to WS Beef Maker from 5/30/09 to 7/8/09.

CE	BW	WW	YW	MCE	Milk	MWW	CW	YG	Marb	REA	API	TI
*	2	42	89	*	10	31	18.6	0.19	0.33	0.05	98	66



Lot 185 -
DSR Miss
Real Rain U65



DSR Miss Real Rain U65

Reg. # Tattoo BD % Simm Color BW WW H/P/S
2481578 U65 3/14/08 3/4 SIM 1/4 ANGUS BLK 80 590 P

LRS Red Reality 33J
DSR Real Break N29
DSR Purdee Nice L104
B C C Bushwacker 41-93
DSR Black Rain P408
DSR Black Splash G10

Double black and polled three quarter heifer. AI'd on 5/21/09 to SS Ebonys Grandmaster. Projected due date is 2/26/2010 with a heifer calf. Exposed to WS Beef Maker from 5/30/09 to 7/8/09.

CE	BW	WW	YW	MCE	Milk	MWW	CW	YG	Marb	REA	API	TI
*	1	35	58	*	-3	15	-2.5	0.01	0.15	0.18	102	63



DSR Dakota Fortune U58

Reg. # Tattoo BD % Simm Color BW WW H/P/S
2481573 U58 3/13/08 PB BLK 88 649 P

SRS J914 Preferred Beef
ES Dakota NK68
ESK68
SRS Fortune 500
DSR Snappy Fortune K28
DSR Moon Kissed H27

This is a double black and polled heifer. Her dam was a good cow for us. AI'd on 5/21/09 to SS Ebonys Grandmaster. Projected due date is 2/26/2010 with a bull calf. Exposed to WS Beef Maker 5/30 to 7/8/09.

CE	BW	WW	YW	MCE	Milk	MWW	CW	YG	Marb	REA	API	TI
4	2	39	66	-2	5	24	4.8	-0.01	0.1	0.08	110	63



DSR Extra Powder U59

Reg. # Tattoo BD % Simm Color BW WW H/P/S
2481574 U59 3/13/08 1/2 SIM 1/2 ANGUS BLK 80 616 P

Nichols Extra H6
Nichols Extra K205
Nichols Blk HeireSS F346
ER Black Cisco 532C
DSR Belara J107
DSR Super Powder G57

These Sim-Angus heifers are really powerful. AI'd on 5/21/09 to SS Ebonys Grandmaster. Projected due date is 2/26/2010 with a bull calf. Exposed to WS Beef Maker 5/30 to 7/8/09.

CE	BW	WW	YW	MCE	Milk	MWW	CW	YG	Marb	REA	API	TI
*	-2	25	58	*	13	26	-5.9	0.13	0.33	-0.02	112	64



DSR Dakota Romance U69

Reg. # Tattoo BD % Simm Color BW WW H/P/S
2481579 U69 3/16/08 PB BLK 87 702 P

SRS J914 Preferred Beef
ES Dakota NK68
ESK68
3C Full Figures C288 Blk
DSR Romance Figure L23
DSR Romance J137

Here's a heifer that has a Stay number of 25.1, that is in the top 20% and still has a high growth. AI'd on 5/21/09 to SS Ebonys Grandmaster. Projected due date is 2/26/2010 with a heifer calf. Exposed to WS Beef Maker from 5/30/09 to 7/8/09.

CE	BW	WW	YW	MCE	Milk	MWW	CW	YG	Marb	REA	API	TI
5	2	45	78	-1	6	28	12	0.09	0.21	0.02	121	69



DSR Dakota Ransom U71

Reg. # Tattoo BD % Simm Color BW WW H/P/S
2481580 U71 3/17/08 PB BLK 87 662 P

SRS J914 Preferred Beef
ES Dakota NK68
ESK68
WHF Red Ransom 840E
DSR Maximum Ransom H188
DSR Maxine B-66

She's double black and polled. The cows in this family are fancy looking. AI'd on 5/21/09 to SS Ebonys Grandmaster. Projected due date is 2/26/2010 with a bull calf. Exposed to WS Beef Maker from 5/30/09 to 7/8/09.

CE	BW	WW	YW	MCE	Milk	MWW	CW	YG	Marb	REA	API	TI
3	3	43	75	0	5	27	10.5	0.02	0.08	0.16	106	64

DSR Perfect Design U75



Reg. # Tattoo BD % Simm Color BW WW H/P/S
2481584 U75 3/17/08 3/4 SIM 1/4 ANGUS BLK 80 591 P

SRS J914 Preferred Beef Here's another heifer that I really like. She's
Triple C Invasion R47K double black and polled. Al'd on 5/21/09 to SS
Hooks Karrie 47K Ebonys Grandmaster. Projected due date is
Bon View New Design 878 2/26/2010 with a bull calf. Exposed to WS Beef
DSR Best Design S725 Maker from 5/30/09 to 7/8/09.
DSR Moon Stone P62

CE	BW	WW	YW	MCE	Milk	MWW	CW	YG	Marb	REA	API	TI
*	0	26	52	*	7	20	-5.6	0.08	0.35	0.07	106	62



Lot 190 -
DSR Perfect
Design U75

DSR Lady Luck U72



Reg. # Tattoo BD % Simm Color BW WW H/P/S
2481581 U72 3/17/08 PB BLK 79 571 P

Black Shamrock E157 This heifer is double polled and black. Her API
PSR Integrity S504 is in the top 15%. Al'd on 5/21/09 to SS Ebonys
Miss Pelton P405 Grandmaster. Projected due date is 3/15/2010.
Gw Lucky Break 047G Exposed to WS Beef Maker from 5/30/09 to
DSR Lucky Vib L63 7/8/09.
DSR Premonition E56

CE	BW	WW	YW	MCE	Milk	MWW	CW	YG	Marb	REA	API	TI
10	-1	20	40	4	5	15	-14.8	-0.01	0.29	0.08	118	61

DSR Extra Dance U73



Reg. # Tattoo BD % Simm Color BW WW H/P/S
2481582 U73 3/17/08 1/2 SIM 1/2 ANGUS BLK 77 580 P

Nichols Extra H6 She is double black and polled. Her mother
Nichols Extra K205 has produced some very productive females.
Nichols Blk Heiress F346 Al'd on 5/21/09 to SS Ebonys Grandmaster.
GW Lucky Break 047G Projected due date is 2/26/2010 with a bull
DSR Break Dance M95 calf. Exposed to WS Beef Maker from 5/30 to
DSR Black Melody G70 7/8/09.

CE	BW	WW	YW	MCE	Milk	MWW	CW	YG	Marb	REA	API	TI
*	-3	23	59	*	12	23	-5.9	0.22	0.43	-0.14	117	66

DSR Miss Jacee U85



Reg. # Tattoo BD % Simm Color BW WW H/P/S
2481587 U85 3/19/08 PB RED 83 617 P

N53 I really like the way these Jake cattle profile.
KBHR S077 Jake Al'd on 5/21/09 to WS Beef Maker. Projected
KBHR J055 due date is 2/26/2010 with a bull calf. Exposed
BH Right Time 520E to WS Beef Maker from 5/30 to 7/8/09.
DSR Ambience J31
DSR Red Fern F76

CE	BW	WW	YW	MCE	Milk	MWW	CW	YG	Marb	REA	API	TI
7	1	39	67	2	3	23	3	0.06	0.21	0.02	111	68

DSR Morning Light U91



Reg. # Tattoo BD % Simm Color BW WW H/P/S
2481589 U91 3/20/08 PB RED 77 623 P

Branded Beef LCC L397L This is a full sister to the \$10,000 DSR Yukon
MLC Dakota Sunrise P32 Red bull that Kunkel Simmental ND owns, and
MLC Red Light M33 DSR Signature bull that we used. Al'd on
LRS Red Reality 33J 5/21/09 to WS Beef Maker. Projected due date
DSR Real Dazzel N185 is 2/26/2010 with a bull calf. Exposed to WS
DSR Dazzle K65 Beef Maker from 5/30/09 to 7/8/09.

CE	BW	WW	YW	MCE	Milk	MWW	CW	YG	Marb	REA	API	TI
6	0	33	64	5	6	22	0.4	-0.07	0.08	0.23	100	62

DSR Miss Denice U119



Reg. # Tattoo BD % Simm Color BW WW H/P/S
2481520 U119 3/22/08 3/4 SIM 1/4 ANGUS RBF 81 581 P

Wheatland Bull 131L Here's a fancy and deep sided female. Al'd on
Wheatland Red Teddy 457P 5/21/09 to WS Beef Maker. Projected due date
Wheatland Lady 902J is 2/26/2010 with a bull calf. Exposed to WS
Holden Hi-C 8128 Beef Maker from 5/30/09 to 7/8/09.
DSR Wing It P405
DSR Red Heart M71

CE	BW	WW	YW	MCE	Milk	MWW	CW	YG	Marb	REA	API	TI
*	-1	26	44	*	3	15	-12.7	0.08	0.12	-0.09	102	59

DSR Annie U126



Reg. # Tattoo BD % Simm Color BW WW H/P/S
2481522 U126 3/24/08 PB RED 97 645 P

RC Stinger 072K This is a double polled and non-diluted heifer.
TNT Gunner N208 The L133 cow is very easy keeping. Al'd on
TNT Miss Honey L9 5/21/09 to WS Beef Maker. Projected due date
SRS Fortune 500 is 2/26/2010 with a bull calf. Exposed to WS
DSR Lady Fortune L133 Beef Maker from 5/30/09 to 7/8/09.
DSR Disa F10

CE	BW	WW	YW	MCE	Milk	MWW	CW	YG	Marb	REA	API	TI
7	4	43	70	3	3	24	9.9	0.14	0.13	-0.07	101	63



DSR Red Gem U122

Reg. # **Tattoo** **BD** % **Simm** **Color** **BW** **WW** **H/P/S**
2481521 U122 3/23/08 PB RBF 84 611 P

Branded Beef LCC L397L
MLC Dakota Sunrise P32
MLC Red Light M33
OMF Long Cut J6
DSR Emmie N104
DSR Red Emmie H171

This double polled female is out of one of our deepest cows. AI'd on 5/21/09 to WS Beef Maker. Projected due date is 3/15/2010. Exposed to WS Beef Maker from 5/30/09 to 7/8/09.

CE	BW	WW	YW	MCE	Milk	MWW	CW	YG	Marb	REA	API	TI
4	2	38	70	7	9	28	6.8	-0.03	0.19	0.17	105	66



DSR Shear Passion U137

Reg. # **Tattoo** **BD** % **Simm** **Color** **BW** **WW** **H/P/S**
2481528 U137 3/25/08 PB RED 78 706 P

Hooks Shear Force 38K
WS Beef Maker R13
DCR Ms Ribeye N72
Branded Beef LCC L397L
DSR Sweet Passion P18
DSR Chanel K94

This heifer has 11 out of 16 EPD's that are at least in the top 25% of the breed. AI'd on 5/21/09 to TNT Gunner N208. Projected due date is 2/26/2010 with a bull calf. Exposed to DSR Signature T458 from 5/30 to 7/9/09.

CE	BW	WW	YW	MCE	Milk	MWW	CW	YG	Marb	REA	API	TI
10	-1	50	75	1	7	32	5.5	-0.04	0.18	0.35	127	75



DSR Red Angel U127

Reg. # **Tattoo** **BD** % **Simm** **Color** **BW** **WW** **H/P/S**
2481523 U127 3/24/08 PB RED 77 675 P

Wheatland Bull 131L
Wheatland Red Teddy 457P
Wheatland Lady 902J
DSR Enticeing K101
DSR Red Dust M81
DSR Miss Angel Dust D78

This is a heifer out of the M81 cow. She had 5 calves have an average weaning ratio of 104. AI'd on 5/21/09 to WS Beef Maker. Projected due date is 2/26/2010 with a bull calf. Exposed to WS Beef Maker from 5/30 to 7/8/09.

CE	BW	WW	YW	MCE	Milk	MWW	CW	YG	Marb	REA	API	TI
7	-2	27	44	-1	12	26	-13.9	-0.03	0.1	-0.17	106	61



DSR Dakot Fortune U130

Reg. # **Tattoo** **BD** % **Simm** **Color** **BW** **WW** **H/P/S**
2481525 U130 3/24/08 PB BLK 93 655 P

SRS J914 Preferred Beef
ES Dakota NK68
ESK68
SRS Fortune 500
DSR Perfect Powder J84
DSR Olympia C72

Here's a double black and polled heifer that goes back to the Molley cow family. AI'd on 5/21/09 to SS Ebony's Grandmaster. Projected due date is 3/24/2010. Exposed to WS Beef Maker from 5/30/09 to 7/8/09.

CE	BW	WW	YW	MCE	Milk	MWW	CW	YG	Marb	REA	API	TI
4	4	42	79	-2	3	24	15.4	0.02	0.11	0.13	106	63



DSR Miss Omega U136

Reg. # **Tattoo** **BD** % **Simm** **Color** **BW** **WW** **H/P/S**
2481527 U136 3/25/08 PB RED 83 669 P

Hooks Shear Force 38K
WS Beef Maker R13
DCR Ms Ribeye N72
WHF Red Ransom 840E
DSR Omega J197
DSR Miss Carmen E155

Her mama has done an exceptional job for us. She weaned 8 calves to have an average ratio of 103 and had 4 scan for an average IMF ratio of 111 and a REA ratio of 103. AI'd on 5/20/09 to TNT Gunner N208. Projected due date is 3/14/2010. Exposed to DSR Signature T458 from 5/30/09 to 7/9/09.

CE	BW	WW	YW	MCE	Milk	MWW	CW	YG	Marb	REA	API	TI
9	0	43	68	-1	9	31	2.9	-0.02	0.38	0.34	123	75



DSR Picture Ready U143

Reg. # **Tattoo** **BD** % **Simm** **Color** **BW** **WW** **H/P/S**
2481530 U143 3/25/08 PB RED 92 608 P

Branded Beef LCC L397L
MLC Dakota Sunrise P32
MLC Red Light M33
LRS Red Reality 33J
DSR Red Picture M23
DSR Bold Red K26

Here's double polled heifer out of the dark red M23 cow. AI'd on 5/21/09 to WS Beef Maker. Projected due date is 2/26/2010 with a heifer calf. Exposed to WS Beef Maker from 5/30 to 7/8/09.

CE	BW	WW	YW	MCE	Milk	MWW	CW	YG	Marb	REA	API	TI
6	2	34	71	5	7	24	8.7	-0.02	0.07	0.17	97	60

DSR New Design U142



Reg. # Tattoo BD % Simm Color BW WW H/P/S
2481529 U142 3/25/08 1/2 SIM 1/2 ANGUS BLK 79 596 P

- B/R New Design 036
- Bon View New Design 878
- Bon View Gammer 85
- SS Milestone
- DSR Lucky Stone P128
- DSR Lady Luck G127

She is double polled and black. Al'd on 5/21/09 to SS Ebonys Grandmaster. Projected due date is 4/10/2010. Exposed to WS Beef Maker from 5/30/09 to 7/8/09.

CE	BW	WW	YW	MCE	Milk	MWW	CW	YG	Marb	REA	API	TI
*	-1	22	47	*	8	19	-9.7	0.19	0.45	-0.24	104	60



DSR Extra Extra U145



Reg. # Tattoo BD % Simm Color BW WW H/P/S
2481531 U145 3/26/08 1/2 SIM 1/2 ANGUS BLK 99 626 P

- Nichols Extra H6
- Nichols Extra K205
- Nichols Blk HeireSS F346
- Brooks Above Par
- DSR Miss Headline R896
- DSR Fortune Rush K54

This is a double polled and black Sim-Angus heifer. Al'd on 5/21/09 to SS Ebonys Grandmaster. Projected due date is 2/26/2010 with a heifer calf. Exposed to WS Beef Maker from 5/30/09 to 7/8/09.

CE	BW	WW	YW	MCE	Milk	MWW	CW	YG	Marb	REA	API	TI
*	3	46	94	*	3	26	23.3	0.23	0.39	-0.11	97	68



DSR Dakota Spice U147



Reg. # Tattoo BD % Simm Color BW WW H/P/S
2481532 U147 3/26/08 PB BLK 87 686 P

- SRS J914 Preferred Beef
- ES Dakota NK68
- ESK68
- SRS Fortune 500
- DSR Fortune Spice K8
- DSR Black Essence H17

Take note she goes back to the K8 cow. Al'd on 5/21/09 to SS Ebonys Grandmaster. Projected due date is 2/26/2010 with a heifer calf. Exposed to WS Beef Maker from 5/30/09 to 7/8/09.

CE	BW	WW	YW	MCE	Milk	MWW	CW	YG	Marb	REA	API	TI
4	1	40	73	-2	4	25	7.5	0.02	0.2	0.12	112	67



DSR Red Gun U153

Reg. # Tattoo BD % Simm Color BW WW H/P/S
2481537 U153 3/26/08 PB RED 104 699 P

- RC Stinger 072K
- TNT Gunner N208
- TNT Miss Honey L9
- LRS Red Reality 33J
- DSR Real Red L15
- DSR Captured Red J172

The cows in her pedigree are all top producers. Her dam and grand dam have already produced top end Beef Maker calves for us. Al'd on 5/20/09 to WS Beef Maker. Projected due date is 2/25/2010 with a heifer calf. Exposed to WS Beef Maker from 5/30/09 to 7/8/09.

CE	BW	WW	YW	MCE	Milk	MWW	CW	YG	Marb	REA	API	TI
7	6	56	92	2	-1	27	25.2	0.07	0.02	0.34	98	66

DSR Red Envy U165



Reg. # Tattoo BD % Simm Color BW WW H/P/S
2481538 U165 3/27/08 PB RED 85 641 P

- Wheatland Bull 131L
- Wheatland Red Teddy 457P
- Wheatland Lady 902J
- LRS Red Reality 33J
- DSR Sonja L8
- DSR Temtation J111

She is out of the L8 cow. She has put awesome performance and carcass into her progeny. Al'd on 5/21/09 to WS Beef Maker. Projected due date is 2/26/2010 with a heifer calf. Exposed to WS Beef Maker from 5/30/09 to 7/8/09.

CE	BW	WW	YW	MCE	Milk	MWW	CW	YG	Marb	REA	API	TI
6	0	39	64	-1	2	21	0.4	0.01	0.12	0.12	106	65



DSR Miss Eloquent U169

Reg. # Tattoo BD % Simm Color BW WW H/P/S
2481539 U169 3/28/08 PB RED 83 623 P

- RC Stinger 072K
- TNT Gunner N208
- TNT Miss Honey L9
- MV Red Light 406
- DSR Ms Elige J62
- DSR Tracy A-19

The A19 cow family has produced some top end progeny. Al'd on 5/21/09 to WS Beef Maker. Projected due date is 2/26/2010 with a bull calf. Exposed to WS Beef Maker 5/30/09 to 7/8/09.

CE	BW	WW	YW	MCE	Milk	MWW	CW	YG	Marb	REA	API	TI
7	2	33	55	3	10	26	-2.7	0.09	0.04	-0.16	89	58



Lot 209 -
DSR Real
Edge U151

DSR Real Edge U151



Reg. # Tattoo BD % Simm Color BW WW H/P/S
2481535 U151 3/26/08 PB BLK 89 653 P

- LRS Red Reality 33J
- DSR Real Break N29
- DSR Purdee Nice L104
- GFI Magnum K52
- DSR Magnum Edge R837
- DSR Black Edge M174

Here's a double black and polled Real Break daughter. Al'd on 5/20/09 to SS Ebonys Grandmaster. Projected due date is 2/25/2010 with a bull calf. Exposed to WS Beef Maker from 5/30/09 to 7/8/09.

CE	BW	WW	YW	MCE	Milk	MWW	CW	YG	Marb	REA	API	TI
4	4	41	69	-2	-2	19	8.6	0	0.08	0.1	93	61

DSR Rock On U173



Reg. # Tattoo BD % Simm Color BW WW H/P/S
2481540 U173 3/28/08 1/2 SIM 1/2 ANGUS BLK 88 588 P

- Nichols Extra H6
- Nichols Extra K205
- Nichols Blk Heiress F346
- DSR Stone Edge G14
- DSR Hard Rock P201
- DSR Black Call G27

A half blood heifer out of the good looking P201 cow. Al'd on 5/21/09 to SS Ebonys Grandmaster. Projected due date is 2/26/2010 with a heifer calf. Exposed to WS Beef Maker from 5/30/09 to 7/8/09.

CE	BW	WW	YW	MCE	Milk	MWW	CW	YG	Marb	REA	API	TI
*	2	30	69	*	7	22	6.8	0.22	0.38	-0.14	92	59

DSR On The Edge U182



Reg. # Tattoo BD % Simm Color BW WW H/P/S
2481542 U182 3/31/08 PB BLK 100 668 P

- SRS J914 Preferred Beef
- ES Dakota NK68
- ESK68
- DSR Stone Edge G14
- DSR Black Edge M174
- DSR Black Elsie H178

This is out of the M174 cow. She has produced some top bulls too. Al'd on 5/21/09 to Hook's Shear Force 38K. Projected due date is 2/26/2010 with a heifer calf. Exposed to WS Beef Maker 5/30/09 to 7/8/09.

CE	BW	WW	YW	MCE	Milk	MWW	CW	YG	Marb	REA	API	TI
2	4	44	86	1	7	29	20.2	0.04	0.17	0.12	110	65

DSR Miss Shimmery U202



Reg. # Tattoo BD % Simm Color BW WW H/P/S
2481546 U202 4/3/08 PB RED 87 684 P

- Hooks Shear Force 38K
- WS Beef Maker R13
- DCR Ms Ribeye N72
- DSR Red Tracer D184
- DSR Shimmer J27
- DSR Black Call G27

This non-diluted, double polled heifer has the same shape as her mom. The J27 cow is clean made with a ton of capacity. Al'd on 5/21/09 to TNT Gunner N208. Projected due date is 2/26/2010 with a heifer calf. Exposed to DSR Signature T458 from 5/30/09 to 7/9/09.

CE	BW	WW	YW	MCE	Milk	MWW	CW	YG	Marb	REA	API	TI
7	2	42	65	1	8	29	4.1	-0.08	0.17	0.29	115	67

DSR Real Detail U213



Reg. # Tattoo BD % Simm Color BW WW H/P/S
2481548 U213 4/7/08 PB BLK 82 625 P

- LRS Red Reality 33J
- DSR Real Break N29
- DSR Purdee Nice L104
- Nichols Blk Destiny D12
- DSR Black Detail J19
- DSR Black Splash G10

This is a double black and polled heifer. Al'd on 5/20/09 to SS Ebonys Grandmaster. Projected due date is 2/25/2010 with a bull calf. Exposed to WS Beef Maker from 5/30/09 to 7/8/09.

CE	BW	WW	YW	MCE	Milk	MWW	CW	YG	Marb	REA	API	TI
6	0	32	51	-1	-2	14	-7	-0.11	0.03	0.26	99	59

DSR Miss Fortune U215



Reg. # Tattoo BD % Simm Color BW WW H/P/S
2481549 U215 4/7/08 PB BLK 91 652 P

- Hooks Shear Force 38K
- WS Beef Maker R13
- DCR Ms Ribeye N72
- SRS Fortune 500
- DSR Harmony J13
- DSR Lady Luck G127

Here's a black Beef Maker heifer. Her dam has had 9 calves with an average weaning ratio of 106. Al'd on 5/21/09 to SS Ebonys Grandmaster. Projected due date is 2/26/2010 with a bull calf. Exposed to DSR Signature T458 from 5/30/09 to 7/9/09.

CE	BW	WW	YW	MCE	Milk	MWW	CW	YG	Marb	REA	API	TI
10	1	39	63	-2	9	28	1.4	-0.04	0.29	0.31	122	70

DSR Made Lucky U233



Reg. # Tattoo BD % Simm Color BW WW H/P/S
2481556 U233 4/12/08 PB BLK 81 678 P

- Hooks Shear Force 38K
- WS Beef Maker R13
- DCR Ms Ribeye N72
- PTL Jack Pot C588
- DSR Lady Luck G127
- DSR Jane U110

This heifer is a maternal sister to the J13 cow. I expect her to be very productive. Al'd on 2/21/09 to SS Ebonys Grandmaster. Projected due date is 2/26/2010 with a heifer calf. Exposed to DSR Signature T458 from 5/30 to 7/9/09.

CE	BW	WW	YW	MCE	Milk	MWW	CW	YG	Marb	REA	API	TI
6	1	41	60	-3	4	25	-0.6	-0.05	0.24	0.3	109	68

DSR Queen U223



Reg. # Tattoo BD % Simm Color BW WW H/P/S
2481552 U223 4/9/08 PB RED 78 670 P

- Hooks Shear Force 38K
- WS Beef Maker R13
- DCR Ms Ribeye N72
- BOZ Redcat D162
- DSR Red Dish K51
- DSR Vesta E106

Here's a heifer out of the K51 cow. This family has produced many top animals. AI'd on 5/21/2009 to TNT Gunner N208. Projected due date is 3/12/2010 with a bull calf. Exposed to DSR Signature T458 from 5/30/09 to 7/9/09.

CE	BW	WW	YW	MCE	Milk	MWW	CW	YG	Marb	REA	API	TI
9	-1	44	67	-2	8	30	0.7	-0.05	0.16	0.31	119	71



DSR No Surprise U234



Reg. # Tattoo BD % Simm Color BW WW H/P/S
2481557 U234 4/12/08 PB RED 82 692 P

- Hooks Shear Force 38K
- WS Beef Maker R13
- DCR Ms Ribeye N72
- DSR Red Tracer D184
- DSR Red Surprise M203
- DSR Hideaway K228

Here's a female out of the Lot 118 cow. These cows have been outstanding producers. Do the reseach and you will be impressed. AI'd on 5/21/09 to TNT Gunner N208. Projected due date is 2/26/2010 with a bull calf. Exposed to DSR Signature T458 from 5/30/09 to 7/9/09.

CE	BW	WW	YW	MCE	Milk	MWW	CW	YG	Marb	REA	API	TI
7	1	41	70	1	11	32	4.6	-0.05	0.21	0.2	122	70



DSR Fortune U242



Reg. # Tattoo BD % Simm Color BW WW H/P/S
2481560 U242 4/18/08 PB RED 77 661 P

- Hooks Shear Force 38K
- WS Beef Maker R13
- DCR Ms Ribeye N72
- Polled Hercules A7
- DSR Red Fayme E50
- DSR Red DutcheSS C53

Here's another direct daughter of the DSR Red Fayme E50 cow. This cow family has just done it all. There is a KC Royal champion in there and many high selling cattle through out. Yes it started with the 325R cow. AI'd on 5/21/09 to TNT Gunner N208. Projected due date is 2/26/2010 with a heifer calf. Exposed to DSR Signature T458 from 5/30/09 to 7/9/09.

CE	BW	WW	YW	MCE	Milk	MWW	CW	YG	Marb	REA	API	TI
8	-1	32	53	-5	11	27	-7.5	-0.07	0.18	0.2	110	65



DSR Red Empress U237



Reg. # Tattoo BD % Simm Color BW WW H/P/S
2481558 U237 4/15/08 PB RED 87 661 P

- N53
- KBHR S077 Jake
- KBHR J055
- SV Red Charlie
- DSR Chanel K94
- DSR Passion F77

This is a maternal sister to the donor, DSR Real Passion that Craig Simmental of IN bought at the ND Showcase Sale. AI'd on 5/21/09 to WS Beef Maker. Projected due date is 2/26/2010 with a bull calf. Exposed to WS Beef Maker from 5/30 to 7/8/09.

CE	BW	WW	YW	MCE	Milk	MWW	CW	YG	Marb	REA	API	TI
8	2	43	72	3	8	30	6.9	0.02	0.11	0.1	105	67

DSR Red Empress U237



Reg. # Tattoo BD % Simm Color BW WW H/P/S
2481562 U246 4/20/08 PB BLK 98 649 P

- LRS Red Reality 33J
- DSR Real Break N29
- DSR Purdee Nice L104
- DSR Blockbuster E148
- DSR Black Essence H85
- DSR Black Mayda E28

This hieffer's family taces back to PVF Black Joker's cow family. AI'd on 5/21/09 to Hook's Shear Force 38K. Projected due date is 2/26/2010 with a heifer calf. Exposed to WS Beef Maker from 5/30/09 to 7/8/09.

CE	BW	WW	YW	MCE	Milk	MWW	CW	YG	Marb	REA	API	TI
4	5	44	68	-4	-6	16	9.9	0.01	0.05	0.1	90	59

DSR Inside Track U247



Reg. # Tattoo BD % Simm Color BW WW H/P/S
2481563 U247 4/26/08 PB RED 0 704 P

- OMF Long Cut J6
- DSR Right Track P78
- DSR Red Fox L7
- 3C Full Figures C288 BIK
- DSR Full Beauty K15
- DSR Red Annie H203

We've had some real nice maternal sisters that have gone out to do a good job. AI'd on 5/21/09 to WS Beef Maker. Projected due date is 2/26/2010 with a female calf. Exposed to WS Beef Maker from 5/30 to 7/8/09.

CE	BW	WW	YW	MCE	Milk	MWW	CW	YG	Marb	REA	API	TI
6	2	45	70	3	2	24	6.9	0.07	0.36	-0.04	125	72

DECKERT

Generations of Genetics
for your future

DSR
DECKERT
Simmental Ranch

Justin & Carrie Deckert
24952 392nd ST NE, Arena ND 58494
Home 701-943-2477 or Cell 701-425-6673
dsrcows@bektel.com

Dispersal Sale

Sept. 21, 2009

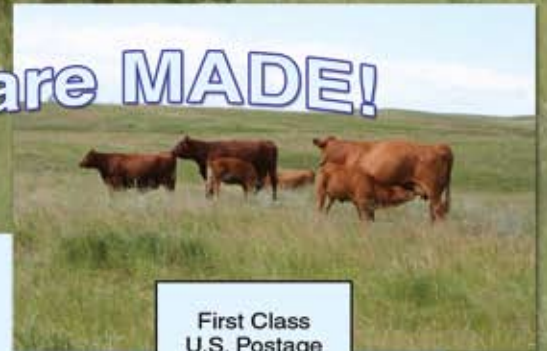
At the Ranch • Arena, ND

Sale time: 12:00 p.m.

Where GREAT cows are MADE!

Eberspacher
ENTERPRISES INC.

2904 County Road 6 • Marshall, MN 56258



First Class
U.S. Postage
PAID
Permit #86
Marshall, MN

FIRST CLASS MAIL: TIME DATED MATERIAL!

TO:

PLEASE BRING THIS CATALOG AND YOUR ASA # WITH YOU TO THE SALE